

# dogs<sup>®</sup>

QUEENSLAND

ISSUE 9 | September 2015 | RRP \$4.95

INSIDE THIS ISSUE

THREE  
GLAMOROUS  
HERDING BREEDS

*A look into Drafting  
Dogs that pull carts  
Inside on pages 46 - 47*

PLUS

*A little bit about the  
Old English Sheepdog  
Meet the lovable clowns  
of the dog world!*

SUP CH Ottaba Peeka Bewe



# TopDog Walking Machines

## Fitness Machines for the Active Canine

Need that extra edge on the Competition

 Great Conditioner for your Show Champion


 Develop Muscle, Strength & Stamina

 Control Your Dogs Fitness Routine


 Correct Gaiting Faults whilst in Motion

 Provides Exercise in Adverse Weather Conditions

 Ideal for Vet Clinics & Kennels

 Perfect for Rehabilitation after Surgery or Injury

 Prevents Obesity & Increases Health & Vitality

 Exercise multiple dogs in half the time

**Proudly Manufactured locally in Greenbank QLD 4124**

email:- [topdogwalkingmachines@hotmail.com](mailto:topdogwalkingmachines@hotmail.com)

[www.topdogwalkingmachines.com.au](http://www.topdogwalkingmachines.com.au)



## Inside this issue

### Cover photograph:

SUP CH Ottaba Peeka Bewe

Owned by R. Schnaars and A. Cassidy. Bred by A Cassidy.

- 2** President's Message
- 3** Editorial Notes
- 4 - 9** Board Notes
- 10 - 15** Notices
- 16 - 23** Judge's Training and Regulations

### Articles of Interest

- 24** Library News
- 26 - 27** A Little Bit about the Old English Sheepdog Feature Breed
- 32 - 36** Dog Agility and Shelties Feature Breed
- 37** The Polish Lowland Sheepdog Feature Breed
- 38** The Bearded Collie Feature Breed
- 40 - 41** Zone 2 Dog World Update, September 2015
- 42 - 45** The Shetland Sheepdog Club of Queensland Inc

### Schedules

- 49 - 56** Show Schedules
- 58 - 59** Obedience Trial Schedules
- 60** Other Trial Schedules

### Directories

- 61 - 64** Registered Breeders Directory
- 65 - 67** Kennel Clubs Directory
- 68** Rates Guide

## September Library book review: 'The Book of the CHOW CHOW'

**Page 25**



## THE OLD ENGLISH SHEEPDOG

A SYNOPSIS. THE BREED AND JUDGING OF THE BREED

Written by Patricia S. McLeod, International All Breeds Judge



Pages 28 - 30

## *Dogs that pull carts -* **Drafting**

Pages 46 - 47



## President's message for September 2015

The last month has certainly been a very busy time for our organisation. There have been a number of important events and matters that have arisen.

### **EKKA 2015**

This year's EKKA was definitely well received and enjoyed by all those who attended. The new area allocated for the show was exceptional, and I have only heard positive feedback from members. A huge vote of thanks must go to all the volunteers that gave up their time to assist over the duration of the EKKA. Without your continued support, these events would not be possible. The efforts of the PR, Marketing and Magazine Committee must also be acknowledged. The work conducted by this Committee before and during the course of the EKKA was phenomenal. The radio package and newly designed Dogs Queensland stand definitely contributed to our success at the EKKA. The showbags were a hit with the general public, and it was difficult to keep up with the demand!

### **All Dogs Sports Spectacular**

The All Dogs Sports Spectacular continues to go from strength to strength. The public attendance at this year's event was exceptional. This event continues to promote our organisation, and the various different types of activities that encompass 'Dog Sports'. Thanks must go to the hard working committee that organise and run this event.

### **Puppy farming legislation**

As reported by Mark Sheppard in a recent email to all Members, Biosecurity Queensland developed a new online survey designed to check whether Queenslanders had changed their thinking about how to manage puppy farms – the survey closed on Sunday 6<sup>th</sup> September 2015 and I hope members completed this survey. It is vitally important that a strong message be sent to Biosecurity Queensland which reinforces once again Dogs Queensland as the peak industry body for canine affairs in this State. Dogs Queensland have an extensive set of enforceable Rules and a Code of Ethics which dictates how our member breeders manage their breeding programs.

I cannot stress enough that Dogs Queensland does not agree that our members should be expected to participate in a Government imposed scheme which in many ways duplicates exactly what our responsible breeders are already doing. It is hoped that your support will ensure that our Dogs Queensland position is clearly understood by Government decision makers when the time comes to develop new legislation.

I would conclude by saying that I believe that we are very well positioned in relation to the proposed Puppy Farm Legislation and I commend Mark not just for his recent efforts but for his quiet efficiency in the forging of strong State Governments relations over a number of years that are now paying dividends.

As a final note, I would like to remind members that our organisation is driven by the commitment and dedication of volunteers. Our volunteers range from members, to non-members, and also employees. These people give up their own free time to ensure the continued success of Dogs Queensland, and Dogs Queensland events. No one is perfect, and I would ask that members be respectful of the efforts and contributions of all those people who volunteer. On behalf of the Board, I would like to express our utter thanks and gratitude to all those volunteers for their commitment and dedication to this organisation. Without your continued devotion, we would not be in the strong position that we currently are.

---

**Shane Thomas**  
**President**



.....

### President

Mr S. Thomas

### Senior Vice President

Miss A. Carius

### Junior Vice President

Mrs U. Greenwood

### Secretary

Mr R. Harrison

### Board

Ms S. Bendixen, Mr C. Pettett,  
Mr T. Thomas, Mr L.J. Blumel,  
Mrs S.J. Mundt, Mrs. B.M. Murfet,  
Miss C. Pearen, Mrs N. Zimmerle  
and Mr D. Weil

### Address

3 / 134 Constance Street,  
Fortitude Valley 4006

### Telephone

(07) 3252 2661

### Facsimile

(07) 3252 3864

### Email

info@dogsqueensland.org.au

### Website

www.dogsqueensland.org.au

### Dogs Queensland Postal address:

PO Box 495, Fortitude Valley, Qld 4006

### Durack Sports Grounds address:

Dogs Queensland Sports Grounds,  
247 King Avenue Durack, Qld 4077

**Ph:** (07) 3372 8887 (show days only)

Caretaker's Residence

**Ph:** (07) 3372 2254



.....

### Printed and distributed by:

#### Printcraft

(07) 3291 2415

www.printcraft.com.au



**Edited by:** Dogs Queensland office

**Features editor:** Nadia Attridge

**Design and artwork by:**

Dogs Queensland office

**Breed advertising layout and photograph returns:**

Dogs Queensland office

**Ph:** (07) 3252 2661

PO Box 495, Fortitude Valley Qld 4006

**Email:** info@dogsqueensland.org.au

**Commercial advertising:**

Dogs Queensland Office

Ph: (07) 3252 2661

## When is your breed featuring?

<b>October</b> 'Rarer Gundogs'	▶ <b>Chesapeake Bay Retriever, Curly Coated Retriever, Flat Coated Retriever, Large Munsterlander, Nova Scotia Duck Tolling Retriever</b>
<b>November</b> 'Welsh Wonders'	▶ <b>Welsh Cardigan Corgi, Welsh Pembroke Corgi, Sealyham Terrier, Welsh Terrier</b>
<b>December</b> 'Christmas Open Breed Theme'	▶ <b>Christmas themed Open Breed Feature, please submit your photo with an article of interest on your chosen breed</b>

### Copy deadline:

All magazine content for The Queensland Dog World is required to be submitted prior to the 1<sup>st</sup> of the month for the following months issue.

**No exceptions can be granted.**

### Front cover photograph policies:

All readers of the Queensland Dog World are invited to submit photographs for front cover consideration. **(a)** Paid cover and breeds of the month given first preference. **(b)** Highest quality photograph chosen from above. **(c)** Actual photographs requested - not digital prints. **(d)** Only portrait (vertically aligned) photographs will be accepted. **(e)** In the event no photographs are received for **(a)** above, then a submission of another breed may be chosen - again, paid over non-paid. Head shots, groups or show poses are accepted.

*The opinions expressed in contributor's articles are not necessarily those of the Dogs Queensland Committee. This magazine reserves the right to refuse the publication of any item or advertisement and, whilst every effort is made to ensure copy is reproduced correctly, no responsibility is taken for error.*

### Notice to advertisers

The Trade Practices Act came into force on 1<sup>st</sup> October 1974. Certain provisions of the act relating to consumer protection place a heavy burden upon advertisers, advertising agents and the publishers of advertisements. In view of the obvious impossibility of our ensuring that advertisements submitted for publication comply with the act, advertisers themselves need to ensure that the provisions of the act are strictly complied with. In cases of doubt, advertisers are advised to seek legal advice before submitting advertising material.



## Board Notes for September 2015

### Christmas Office Closure

All Members are asked to please note that the Dogs Queensland Office will be closed for the Christmas Holidays from 12:00pm on Wednesday 23<sup>rd</sup> December 2015 and will reopen on Monday 4<sup>th</sup> January 2016.

### Special General Meeting

NOTICE is hereby given that a SPECIAL GENERAL MEETING OF MEMBERS of the Canine Control Council (Queensland) Limited will be held in the Function Room, Dogs Queensland Sports Grounds, King Avenue, Durack at 7:00pm on Monday 14<sup>th</sup> September 2015. All Members have a right to appoint a proxy under Clauses 55-59 of the CCC(Q) Ltd Constitution.

The Board of Directors gives notice of a Special Resolution (a Special Resolution is a resolution that needs to be passed by at least seventy five percent (75%) of members present at a General Meeting) to amend the CCC(Q) Ltd Constitution in accordance with Clause 70 of the Constitution reproduced below;

#### 70 Amendments to the Constitution

70.1 Subject to the Act, this Constitution may be amended only if:  
(1) a Special Resolution is passed at a General Meeting that a proposed constitutional amendment be put to members for a vote; and  
(2) seventy five percent (75%) of all members who vote, vote in favour of the proposed amendment at a subsequent ballot.

The Special General Meeting has been called in line with a written request received as per Constitutional Clause 49.1 (2) and Members are given notice as per Constitutional Clause 50.1 reproduced below;

#### 49 Special General Meetings

49.1 The Secretary must call a Special General Meeting (SGM) upon:

(1) being directed to call the meeting by the Board; or  
(2) being given a written request signed by one hundred (100) members of the CCCQ Ltd.

49.2 A request for a SGM must state:

(1) why the SGM is being called; and  
(2) the business to be conducted at the meeting.

49.3 A SGM must be held within two (2) months after the date the Secretary receives a request for a SGM in accordance with this clause 49.

49.4 If the Secretary is unable or unwilling to call a SGM within two (2) months, then the President must call the meeting.

#### 50 Notice of all General Meetings

50.1 The Secretary must give at least twenty one (21) days' notice of the General Meeting to each member of the CCCQ Ltd.

50.2 If the Secretary is unable or unwilling to give notice of the meeting, the President must give notice of the meeting.

50.3 The notice of a General Meeting must set out the place, date and time for the meeting and, if the meeting is to be held in two (2) or more places, the technology that will be used.

50.4 A notice of a General Meeting must state the business to be conducted at the meeting. If a Special Resolution is to be proposed at the meeting, the notice is to set out an intention to propose the Special Resolution and its content.

50.5 A notice of a General Meeting must contain a statement that the members have a right to appoint a proxy;

50.6 The accidental omission to give notice of any General Meeting or the non-receipt of the notice by any person entitled to receive notice of a General Meeting does not invalidate the proceedings at, or any resolution passed at the meeting.

In addition to the above Resolution, the Special General Meeting will also deal with a second item of business in line with a written request received as per Constitutional Clause 49.1 (2) above.

I reproduce below the relevant clauses in regards to the removal of a Dogs Queensland Director;

33.5 Before a vote of members is taken about removing the Director from office, the Board of Directors member must be given a full and fair opportunity to address the meeting and to show cause why he / she should not be removed from office.

33.6 If seventy five percent (75%) of members present at a Special General Meeting determine that a Director ought to be removed, then the Board of Directors member ceases forthwith to be a member of the Board of Directors.

33.7 A Director of the Board of Directors has no right of appeal against his removal at a Special General Meeting but may stand at the next election if otherwise eligible.

Item 1 – Special Resolution to amend the Constitution (Petition available on Dogs Queensland Website)

We, the undersigned members of CCCQ Ltd, request that Mr Rob Harrison, the Secretary of CCCQ Ltd call a Special General Meeting for the purpose of the members of CCCQ Ltd to elect the President and Vice Presidents of CCCQ Ltd rather than the current position requiring the Board to elect the President and Vice Presidents.

The vote for President, Snr Vice President and Jnr Vice President by the members should commence at the next Election of Board Directors to coincide with those elections.



Should the members vote to elect their own President, Senior Vice President and Junior Vice President? And win this vote; I then also submit the following as a guide to be used in this process.

(1) By the deletion of the existing clause 28.3 and the insertion of the following clause in its stead:

(a) At the next AGM, members of CCCQ Limited present in persons or by proxy shall elect one President and two Vice-Presidents from the members of the Board. The President and Vice-Presidents elected at that and subsequent relevant AGMs shall be elected for a term of two (2) years.

(b) The retiring President and Vice-Presidents may offer themselves for re-election upon expiry of their terms.'

(c) Voting shall take place on the basis of 'first past the post'. In the case of the election of the Vice-Presidents, persons eligible to vote will be entitled to cast votes for up to two (2) candidates and the two (2) candidates with the highest number of votes will be elected. A tie in votes for any position will be determined by the drawing of lots. Any position not filled will be treated as a casual vacancy.

Item 2 – Vote of No Confidence in Director Lionel Blumel (Petition available on Dogs Queensland Website)

We, the undersigned members of CCCQ Ltd, request that Mr Rob Harrison, the Secretary of CCCQ Ltd call a Special General Meeting for the purpose of the members of CCCQ Ltd to put a Vote of No Confidence in Director Lionel Blumel.

Note 1: All Financial Members are entitled to attend the SGM and vote at the SGM. Any renewing Members from 2014 who are yet to pay their 2015 Renewal Fees may only attend the SGM but may not vote at the SGM.

Note 2: All Financial Members unable to attend have the right to appoint a proxy in accordance with Clauses 55 – 59 of the CCC(Q) Ltd Constitution; this Proxy Form is available from the Dogs Queensland Website.

For an appointment of a proxy for a meeting of the CCC(Q) Ltd's members to be effective, the following documents must be received by the Secretary at least forty eight (48) hours before the meeting;

(1) the proxy's appointment; and

(2) if the appointment is signed or otherwise authenticated by the appointer's attorney, the authority under which the appointment was signed or authenticated or a certified copy of the authority.

## Durack Fun Days

For 2016, Clubs using Durack for 'Fundays' or similar events will only be allowed to do so twice a year. The dates for 2016 will be Sunday 8<sup>th</sup> May and Sunday 13<sup>th</sup> November.

## Raffle Winners

The Raffle for the \$750 C Crates Voucher that was drawn at the Junior Handler State Final on 16<sup>th</sup> August in aid of the Junior Handlers Committee was won by Mrs Karen Green.



The Raffle for the Conmurra Autofill Hydrobath donated by Hydrobaths Australia valued at \$3,265 that was drawn at the All Dogs Sports Spectacular was won by Ms Tracey Bruhn.



## ANKC News

Please note that the relevant document on the Dogs Queensland / ANKC Website has been amended where applicable;

## AMENDMENT TO FCI BREED STANDARD - WEIMARANER

As a result of advice received from the FCI and after consultation with the National Breed Standards Coordination Group Chairperson Marie Merchant, the breed standard for the Weimaraner and Weimaraner (Longhair) will be amended as follows.

### CURRENTLY READS:

**HISTORY:** There are numerous theories regarding the origin of the Weimaraner Pointing Dog. Only so much is certain: That the Weimaraner, which at that time still contained a great deal of liam hound blood (« Leithund ») was already kept at the Weimar court in the first third of the 19th century.

In the middle of the century, before pure breeding was started, breeding was mainly in the hands of professional hunters and game keepers in central Germany, mostly in the regions round Weimar and in Thuringia. As the days of the liam hounds passed, the dogs were crossed with the (« Hühnerhund ») and breeding was continued with this cross. From about 1890 on, the breed was produced according to a plan and regarded as suitable for registration in a stud book.



*Continued from page 5*

Apart from the short-haired Weimaraner, a long-haired variety occurred, if only singly, since the turn of the century. Since being admitted to the stud book, the Weimaraner has been pure bred, remaining mostly free from crosses with any other breeds, in particular, Pointers. Therefore the Weimaraner is likely to be the oldest German « pointing » breed, which has been pure bred for about a hundred years.

**AMEND TO READ [Amendment underlined]:**

**HISTORY:** There are numerous theories regarding the origin of the Weimaraner Pointing Dog. Only so much is certain: That the Weimaraner, which at that time still contained a great deal of liam hound blood (« Leithund ») was already kept at the Weimar court in the first third of the 19th century.

In the middle of the 19th century, before pure breeding was started, breeding was mainly in the hands of professional hunters and gamekeepers in central Germany, mostly in the regions round Weimar and in Thuringia. As the days of the lima hounds passed, the dogs were crossed with the « Hühnerhund » and breeding was continued with this cross. From about 1890 on, the breed was produced according to a plan and regarded as suitable for registration in a stud book. Apart from the shorthaired Weimaraner, a longhaired variety occurred, if only singly, since the turn of the 20th century. Since being admitted to the studbook, the Weimaraner has been pure bred, remaining mostly free from crosses with any other breeds, in particular, Pointers. Therefore the Weimaraner is likely to be the oldest German « pointing » breed, which has been pure bred since 1900.

**CURRENTLY READS:**

**Tail:** Set on slightly lower than with other similar breeds. Tail strong and well coated. Carried hanging down in repose When alert or working, carried level or higher.

**AMEND TO READ [Amendment underlined]:**

**TAIL:** Set on slightly lower than with other similar breeds. Tail strong and well coated. Carried hanging down in repose. When alert or working, carried level or higher. In countries where it is allowed by law, appropriately tail docking is permissible for shorthaired Weimaraner used for hunting.

**CURRENTLY READS:**

**Hindquarters: General:** High on leg, sinewy and well muscled. Standing parallel, turning neither in nor out.

**AMEND TO READ [Amendment underlined]:**

**HINDQUARTERS: General appearance:** High on leg, sinewy and well muscled. Standing parallel, turning neither in nor out.

**CURRENTLY READS:**

**Faults:** Any departure from the foregoing points should be considered a fault and the seriousness with which the fault should be regarded should be in exact proportion to its degree and its effect upon the health and welfare of the dog, and on the dog's ability to perform its traditional work.

**AMEND TO READ [Amendment underlined]:**

**FAULTS:** Any departure from the foregoing points should be considered a fault and the seriousness with which the fault should be regarded should be in exact proportion to its degree and its effect upon the health and welfare of the dog and its ability to perform its traditional work.

**CURRENTLY READS:**

**SERIOUS FAULTS:**

Serious deficiencies ie. skin very fine or very coarse.  
Mixture of coat varieties defined in the standard.  
Clear deviation from type. Untypical sexual characteristics.  
Gross deviations of size and proportions  
Facial region: gross deviations eg. too strong flews, short or pointed muzzle.

Jaws and teeth: lack of more than two PM1 or M3  
Eyes: Slight faults, above all slight and unilateral faults in eyelids. [Any fault with the eyes and/or the eyelids is considered a serious fault.]  
Ears: Definitely short or long, not folded.  
Throatiness (dewlap), great deviation in neck shape and muscle.  
Back: Definite sway or roach back. Rump higher than withers.  
Chest, belly: Barrel shaped chest. Insufficient depth or length of chest. Tucked up belly.  
Gross anomalies in stance ie. lack of angulation, out at elbows, splay feet.  
Pronounced bow legs or cow hocks.  
Bad movement in different gaits, also lack of free forward movement or drive, pacing.  
Lack of feathering on belly or leathers ( leather ears). Widely spread woolly coat in the shorthaired Weimaraner or curly or sparse feathering in the longhaired variety.  
Departure from shades of gray, such as yellow or brownish, Tan markings.  
Strong departure from correct height or weight (eg. more than 2cm from measurements given in the standard).  
Slight deficiency in temperament.  
Other serious faults.

**AMEND TO READ:**

**SERIOUS FAULTS:**

- Widely spread woolly coat in the shorthaired variety.
- Extremely curly or sparse feathering in the longhaired variety.
- White markings except on chest and toes.
- Ears: Feathering extremely short or long, not turned.
- Back: Severe sway or roach back. Definitely overbuilt at croup.
- Particularly pronounced dewlap.
- Definitive bow or cow hocks.





- Poor angulation, definitely turned outward turned elbows. Open paws.

## CURRENTLY READS:

### DISQUALIFYING FAULTS

Completely untypical, above all too heavy or too light in build.

Completely unbalanced.

Absolutely untypical, eg bulldog type head.

Facial region: Absolutely untypical ie distinctly concave nasal bridge.

Jaws and teeth: Overshot, undershot, missing further teeth other than quoted.

Eyes: Entropion, ectropion.

Ears: Absolutely untypical ie standoff.

Particularly pronounced dewlap.

Back: Severe sway or roach back. Definitely overbuilt at croup/

Chest and belly: Markedly barrel shaped or malformed chest.

Legs rickety or malformed.

Chronic lameness

Totally restricted movement

Skin defects and malformations.

Partial or total loss of hair.

White markings other than on chest and feet.

Colour other than gray. Widespread brown marking.

Definitely over or under sized.

Other malformation. Illness which must be considered hereditary, ie epilepsy.

Faulty temperament ie shy or nervous.

## AMEND TO READ:

### DISQUALIFYING FAULTS:

- Aggressive or overly shy.
- Any dog clearly showing physical or behavioural abnormalities shall be disqualified.
- Significant deviation in type, untypical for sex.
- Serious deviation in the proportions.
- Size more than 2 cm outside the standard.
- Absolutely untypical, above lumbering or weak.
- Absolute disproportionate.
- Extremely impaired when walking.
- Skin malformations and defects.
- Partial or total hair loss.
- Lack of feathering on belly or ears.
- Deviations from grey tones, such as yellow or brownish, tan brand.
- Colour other than gray. Blue colouring.
- Foreface absolutely untypical.
- Facial region: Absolutely untypical i.e. distinctly concave nasal bridge. Muzzle too short, pointed, roman nose or with too short flews.
- Entropion, ectropion. Slight and one sided lid defects.
- Jaw and teeth: Missing more than two PM1 or M3.
- Chest, belly: malformations; barrel chest; insufficient chest depth or length; definitely tucked up belly.
- Malformed legs.
- Other malformations.
- Excessively aggressive towards dogs or people, excessive fear.

- Clearly showing behavioural abnormalities

We currently arranging for the Breed Standard Extension (BSE) for this breed to be updated accordingly and this will be made available from our website once completed.

## APPROVAL OF 2017 NATIONAL SHOW APPLICATION - WHIPPET ASSOCIATION OF VICTORIA INC

ANKC are pleased to advise the approval of the 2017 National Show application received from the Whippet Association of Victoria Inc via DOGS VICTORIA to be held on 11<sup>th</sup> and 12<sup>th</sup> March 2017 at KCC Park, Cranbourne, Victoria.

## TRACKING COMMITTEE MEETING MINUTES

As a result of these minutes being approved, the following Regulations have been amended as noted below and will also be made available from our website:

### Regulations Part 2 - Judges

Clause 1.4 which currently reads:

- 1.4 All Judges Application Forms, both new and renewal, shall contain the following declaration to be signed by the applicant:

"I declare that I am physically fit and capable of judging in accordance with the Rules and if required I am prepared to undergo a medical fitness test and/or vision test at the discretion of the Member Body of ANKC Ltd. I further accept that my Member Body may at its absolute discretion refuse to grant any renewal of licence and may cancel or suspend for any period or vary in any way any licence already granted or to be granted." **(05/93, 7.2.1) (Amended 10/13 – 5.6.4) (Amended 10/14, 7.5.12)**

Has been amended to read:

- 1.4 All Judges Application Forms, both new and renewal, shall contain the following declaration to be signed by the applicant:

"I declare that I am physically fit and conversant with the Member Body and ANKC Ltd Rules and that I am capable of judging in accordance with those Rules and in the normal accepted manner, and if required I am prepared to undergo a medical fitness test and/or vision test at the discretion of the Member Body of ANKC Ltd. I further accept the Member Body may refuse to grant any renewal of licence and may cancel or suspend for any period or vary in any way any licence already granted. Or may grant, in part, only an application for renewal of licence." **(05/93, 7.2.1) (Amended 10/13 – 5.6.4) (Amended 10/14, 7.5.12) (Amended 08/15, EM#117 Effective 01/01/16)**



Continued from page 7

## Regulations Part 3C – Judges Training Scheme for Obedience Trials

New Clause 1.13.1 has been added which reads:

1.3.1 Effective from 1 January 2016 and at their discretion, ANKC Ltd Member Bodies may assess Aspiring Judges for licences at more than one level either simultaneously or consecutively within the same calendar year.

Clause 11.1 which currently reads:

11.1 ANKC Ltd Regulations Part 2, Point 1.3 states;  
11.1.1 All Judges Application Forms, both new and renewal, shall contain the following declaration to be signed by the applicant: "I declare that I am physically fit and capable of judging in accordance with the Rules and in the normal accepted manner, and if required I am prepared to undergo a medical fitness test and/or vision test at the discretion of the Control. I further accept the Control may refuse to grant any renewal of licence and may cancel or suspend for any period or vary in any way any licence already granted. Or may grant, in part, only an application for renewal of licence"

Has been amended to read:

11.1 ANKC Ltd Regulations Part 2, Point 1.4 states;  
11.1.1 All Judges Application Forms, both new and renewal, shall contain the following declaration to be signed by the applicant: "I declare that I am physically fit and conversant with the Member Body and ANKC Ltd Rules and that I am capable of judging in accordance with those Rules and in the normal accepted manner, and if required I am prepared to undergo a medical fitness test and/or vision test at the discretion of the Member Body of ANKC Ltd. I further accept the Member Body may refuse to grant any renewal of licence and may cancel or suspend for any period or vary in any way any licence already granted. Or may grant, in part, only an application for renewal of licence."

## Regulations Part 3F – Judges Training Scheme for Rally Obedience Trials

Clause 1.2 which currently reads:

1.2. ANKC Ltd Member Bodies will assess Judges in the following classes simultaneously:

1. Novice
2. Advanced
3. Excellent

Has been amended to read:

1.2. Effective from 1 January 2016 ANKC Ltd Member Bodies will assess Judges in the following classes simultaneously as a consequence arising from the review of the Rally Obedience rules

and also to be added to Regulations Part 3F where applicable:

1. Novice
2. Advanced
3. Excellent
4. Master

Clause 11.1 which currently reads:

11.1 ANKC Ltd Regulations Part 2, Point 1.3 states;  
11.1.1 All Judges Application Forms, both new and renewal, shall contain the following declaration to be signed by the applicant: "I declare that I am physically fit and capable of judging in accordance with the Rules and in the normal accepted manner, and if required I am prepared to undergo a medical fitness test and/or vision test at the discretion of the Control. I further accept the Control may refuse to grant any renewal of licence and may cancel or suspend for any period or vary in any way any licence already granted. Or may grant, in part, only an application for renewal of licence"

Has been amended to read:

11.1 ANKC Ltd Regulations Part 2, Point 1.4 states;  
1.11.1 All Judges Application Forms, both new and renewal, shall contain the following declaration to be signed by the applicant: "I declare that I am physically fit and conversant with the Member Body and ANKC Ltd Rules and that I am capable of judging in accordance with those Rules and in the normal accepted manner, and if required I am prepared to undergo a medical fitness test and/or vision test at the discretion of the Member Body of ANKC Ltd. I further accept the Member Body may refuse to grant any renewal of licence and may cancel or suspend for any period or vary in any way any licence already granted. Or may grant, in part, only an application for renewal of licence."

## APPROVAL OF ELECTRONIC MOTION #118 - ADDITION OF RULE TO RALLY OBEDIENCE RULES

The amended rules in accordance with this decision are now available.

## AMENDMENTS TO REGULATIONS

The following regulations have been amended;

- Regulations Part 3D – Regulations for the Conduct of Endurance Trial Judges Training Scheme – Clause 11.1
- Regulations Part 3E – Regulations for the Conduct of Tracking Judges Training Scheme – Clause 11.1
- Regulations Part 3G – Regulations for the Conduct of Agility Jumping & Games Judges Training Scheme – Clause 11.1
- Regulations Part 3H – Regulations for the Conduct of Dances with Dogs Judges Training Scheme – Clause 12.1



## Alterations and additions to approved Judges list

### Open Show:

The following Judges have successfully qualified to judge their respective Groups:

**Group 2:** Ms L. Horne, Miss C. Horne and Mr M. Yates

**Group 5:** Mrs B. Dickson, Mr J. Attridge and Mr L. Wright

**Group 6:** Mrs P. Brown and Mrs M. Broughton

**Group 7:** Ms S. Phillips, Ms A. Adamopoulos, Mrs J. Watt, Mr D. McAllister, Ms S. Guilfoyle, Mr D. Kill, Mrs N. Attridge and Mr N. McGreevy

Welcome to these Judges new to the Panel:

**Group 2:** Miss K. Maguire,

**Address:** 4 Rosella CI GYMPIE QLD 4570

**Ph:** (07) 5482 8874 **Mob:** 0431 646 686

**Email:** maceltic@gmail.com

**Group 5:** Mr J. Mitchell

**Address:** 10 Mary St WOODEND QLD 4305

**Ph:** (07) 3282 8717 **Mob:** 0406 301 390

**Email:** bascia1@optushome.com.au

**Group 7:** Mrs J Ruddle

**Address:** 31 Bristlebird Dr MORAYFIELD QLD 4506

**Ph:** (07) 5498 6602

**Email:** jullsbolwell@bigpond.com

**Group 7:** Mrs C. Elliott

**Address:** 22 Vidler Crt LANDSBOROUGH QLD 4550

**Ph:** (07) 5494 8300 **Mob:** 0408 399 408

**Email:** karslemaine@hotmail.com

### Qualified Handler Judges:

**New Judge:** Mr D. Finlay

**Address:** 367 Pikes Crossing Rd BENARABY 4680

**Ph:** (07) 4975 0356 **Mob:** 0488 249 027

**Email:** dominicfinlay9@gmail.com

**New Judge:** Miss O. Mangin

**Address:** 4/5 Pacific St MAIN BEACH 4217

**Ph:** 0447 478 211

**Email:** oliviaestienne97@gmail.com

### Field Trial and Earthdog Trial Judges:

Mr A. Turner has successfully elevated to Restricted Retrieving

### ALL DOGS BREEDING SERVICES

GREENCROSS MORETON VET HOSPITAL

346 REDBANK PLAINS,

REDBANK PLAINS,

QLD 4301

Tel 38143333



### NEW STATE-OF-THE-ART BREEDING FACILITY

- AQIS accredited veterinary services
- Fertility Assessment
- Semen Collection, Analysis, Freezing and Storage
- Digital Radiology
- Progesterone (\$60) and Thyroid Function Tests
- Genetic testing available
- Transcervical AI
- Pregnancy Ultrasound (\$60 per scan)
- Vaginoscopy
- Elective Caesarian Service, including experienced nurse recovery team
- Accredited Vet Hospital
- Special Rates for Canine Control Council Members
- C3 (\$33), C4 (\$33), C5 (\$40).  
Heart Worm Inj up to 10kg \$30, and then \$2/kg thereafter.
- Experienced Vets Dr. Gerry King & Dr. Rishi Shah.

Visit our website for prices and range of services on [all-dogs-breeding-services.com.au](http://all-dogs-breeding-services.com.au)



## Personal Caring Service

### 24 Hours - 7 Days

### Individual Cremation Service

### Large range of memorial urns

### Your babies ashes personally returned to you

### 10% Discount to all CCC Members



Brisbane  
Gold Coast  
Bundaberg  
Sunshine Coast

1800 100 909  
[petsinpeace.com.au](http://petsinpeace.com.au)

Ipswich  
Beaudesert  
Hervey Bay  
Toowoomba



## RAFT News

### Retrieving and Field Trials Committee

The RAFT Committee assists Dogs Queensland in supporting the Field and Retrieving trialling community (Clubs and individuals) in assuring field sports for working gundogs continue to thrive and individuals have the opportunity to participate in field events sanctioned by the ANKC.

### Retrieving Trial Results: FRA 1<sup>st</sup> and 2<sup>nd</sup> August

#### Field and Retrieving Association For Gundogs Inc.

##### Saturday: 1st August 2015

Venue: Jimna

**Novice:** Judge - Ms. M. Sullivan (11 entries, 9 started)

**1st** Adderslot Johnny B Goode (AI) Lab D - J. Christensen (164)

**2nd** Kopafeld Swankie Frankie Lab B - C. Christensen (160)

**3rd** Elwinc Amadeus Domingo ESS D - D. Lynch (158)

**Restricted:** Judge - Mr. A. Turner (9 entries)

**1st** Jagacey Ranger GSP D - D. O'Mahoney (133)

**2nd** Avokah Make My Day Lab d - J. Christensen (128)

**3rd** Adderslot Rudy (AI) Lab D - R. Jackson (123)

**All Age:** Judge - Mr. T. Lodder (15 entries)

**1st** Red Cypher Son of a Gunner Lab D - B. Pritchard (143)

**2nd** Beereegan Miranda Rose RRD Lab B - G. Dawson (136)

**3rd** RTCH. Lidliva Onyx Gundi CM NSDTR D - S. Boodnikoff (handler R. Boodnikoff) (133)

##### Sunday: 2nd August 2015

Venue: Jimna

**Novice:** Judge - Mrs. W. Michalk (9 entries)

**1st** Willowse Sir Lancelot Lab D - R. Eaton-Wells (168)

**2nd** Adderslot Johnny B Goode (AI) Lab D - J. Christensen (158)

**3rd** Kuven Spirit of the Game Lab D - J. Barber (152)

**Restricted:** Judge - Mr. E. Colasimone (9 entries)

**1st** Ridge Runner Bianco (Imp NZL) GSP D - T. Bianco (160)

**2nd** Avokah Make My Day Lab D - J. Christensen (157)

**3rd** Jagacey Ranger GSP D - D. O'Mahoney (154)

**All Age:** Judge - Mr. P. Towing (15 entries)

**1st** RTCH. Bridgoodee Black Tie Affair Lab D - G. Meeve (123)

**2nd** Adderslot Rudy (AI) Lab D - R. Jackson (99)

**3rd** RTCH. Lowther Highland Molly Lab B - D. Lynch (85)

### Featuring the RISING STAR PERPETUAL TROPHY

#### Congratulations

Winner: JAGACEY RANGER (D. O'Mahoney)

Highest Aggregate score over the two days in the Restricted Stake (287 points)

### Featuring the F.R.A.G. PERPETUAL SHIELD

#### Congratulations

Winner: RTCH. LIDLIVA ONYX GUNDI CM (handler R. Boodnikoff)

Highest Aggregate score over the two days in the All Age stake (198 points)

## Starting a New Retrieving Puppy

By Joe Law

Whether you have trained dogs before or you are relatively new to this venture, every fresh start with a puppy will be a somewhat different experience. Previous experiences certainly add to both your knowledge and skill base but because every puppy comes as a unique individual, every new start is going to provide more experience with new opportunities and challenges.

Training programs do vary and truly experienced trainers know that what worked in one training environment involving one set of personalities will not necessarily produce the same outcomes in another.

Flexibility in approach to training is one of the hallmarks of truly experienced trainers. Flexibility, however should not be confused with inconsistency.

Flexibility requires an ability to empathise with your dog, having considerable patience and perseverance along with the ability to initiate new ways of simplifying the learning process for your dog.



## The Clinic

**Acupuncture for People & Pets**  
Treating with:

**Laser, Acupuncture, Massage, Reiki,  
Manipulation, Reflexology, and much more...**

**Ph: 0404 643 330**

**Located at: The Durack Dog Showgrounds**

***We make house calls to you***





Inconsistency, on the other hand, is more likely to be recognised and associated with a lack of the above qualities and resulting in situations where the dog is unable to understand what is being asked of it in order to be correct. Inconsistency leads to confusion, uncertainty and ultimately the lack of trust between dog and handler.



The first six months of a puppy's life is a period of rapid growth and development during which he must learn to cope in the environments that are about to surround his future life. From the time you take delivery of your new pup his education will begin and you will play an integral part in his development. While this period is not generally considered to be a time for formal retriever training, much needs to be done to condition your dog for his future role in life.

Through play and pleasant experiences with you he will learn to cope in a number of different environments. Combined with good nutrition, rest and quiet time he will also learn to meet and greet strangers of both human and animal kind. He must learn to accept being confined in a crate and being restrained by collar and lead. He will have a short concentration span and tire easily so training will be carried out in short sessions. It is important to find time and expose him to those environmental situations that involve noises, crowds, travel, stairs and ramps. He will need to be introduced to different terrains that involve various forms of cover and water.

Your pup can learn and should be taught to come when called and this can easily be introduced by using food and praise as a reward. In the same way simple obedience commands of sit, stay and heeling can be introduced at an early age. His natural drive to retrieve can then be awakened with some playful fetch games but these should be carefully managed so that bad habits of breaking, whining and barking along with failure to return and deliver to hand are not inadvertently developed.

Formal structured retriever training is best introduced after the pup has reached six months of age and will be best left as subjects of future articles.



Photo credits: Lara Sedgmen

## Interested in Retrieving Trials?

### Contacts:

#### Field and Retrieving Association for Gundogs Inc.

Geoff Dawson: geoff.jan.dawson@bigpond.com.au

Ph: (07) 3886 6367, Burpengary

#### Labrador Club of Qld:

Bronwyn Sheppard: bronsheppard@hotmail.com

Ph: (07) 3297 5570, Jimboomba

#### Wide Bay Working Gundog Club:

Wendy Michalk: jagacey@hotmail.com

Ph: (07) 4152 2362, Bundaberg

## Upcoming Events

20	September	FRA	RATG
3/4/5	October	Unification	Ret. Trial

State and National Retrieving Championships Feature:  
October Edition

## Marburg Veterinary Clinic

**Consultations for all species including house calls & farm visits**



- ✓ Reliable 24/7 After Hours Emergency Service
- ✓ Canine Reproductive Services including:
  - Caesarian Sections • In-house Progesterone Testing & Vaginal Cytology Evaluations
  - Natural & Surgical Artificial Insemination
  - Semen Collection, Analysis, Freezing, Storage & Transport Services
- ✓ AQIS Accredited for export
- ✓ Ultrasonography
- ✓ Digital radiography
- ✓ AVA & Penn Hip Scoring
- ✓ Genetic Testing

**Caring & Experienced Veterinarians**  
Drs. Lena & Andrew Ferguson

**French Bulldog Breeders and Members of CCC(Q)**

(07) 5464 4984

ALL HOURS

PO Box 70, Marburg QLD 4346

W: [www.marburgvetclinic.com.au](http://www.marburgvetclinic.com.au) E: [info@marburgvetclinic.com.au](mailto:info@marburgvetclinic.com.au)

Find us on Facebook

EXCLUSIVE PRICES FOR CCC(Q) MEMBERS ON:

- ★ Vaccinations: C3: \$30 C5: \$40
- ★ Microchipping: \$30
- ★ Heartworm injections: \$30 (up to 11kg) then \$2/kg
- ★ Canine Reproductive Services



## Obedience, Tracking and DWD News - Annual Awards

The annual Queensland Dog Sports Committee presentation of awards for achievements in 2015 will take place on Saturday 9 January 2016. Further details of the event will be published in the near future.

In the meantime, below are the rules and qualifying conditions for the following special awards.

### Individual Awards

#### 1. General Rules

The following rules apply to all the individual awards listed below.

- 1.1 **Award year:** Scores claimed must have been Qualifying scores gained within the period 1 January to the last Obedience or Rally Obedience trial held in Queensland in the relevant year (referred to below as the 'qualifying period').
- 1.2 **Eligible members:** To be eligible for any of these awards, the competitor must be a current financial member of the Canine Control Council (Queensland) [CCC(Q)]. The named owner of the dog must be consistent on all submitted Qualifying Certificates.
- 1.3 **Eligible results:** Unless otherwise specified, only results from trials (including breed specific trials) held in Queensland during the qualifying period shall be eligible to be counted.
- 1.4 **Application:** Any competitor wishing to be considered for a specific award must do so in writing and forwarded to the address nominated below for that award. Each application must include photocopies of all relevant Qualifying Certificates or, in the cast of title awards, the relevant Title Certificate.
- 1.5 **Closing date:** The closing date for applications is two (2) weeks from the date of the last trial in 2015, viz 21 December 2015.
- 1.6 **No award:** If in any year there is no eligible applicant for a particular trophy, no award shall be made for that year.

#### 2. Championship and Grand Championship Titles

##### 2.1 Championship title trophies

2.1.1 Title trophies are awarded for the following titles:

- Obedience Champion
- Obedience Grand Champion
- Tracking Champion
- Track and Search Champion
- Track and Search Grand Champion
- Dances with Dogs Champion.

2.1.2 Applications for the above title trophies should be forwarded to:

Mrs T Young,  
22 Boomerang Road,  
Tamborine 4270

##### 2.2 Tracking Champions/Track & Search Champions and Grand Champions Queensland Honour Boards

2.2.1 The name of any dog which has achieved a Tracking Champion title will be recorded on the Tracking Champions Queensland Honour Board.

2.2.2 The name of any dog which has achieved a Track and Search Champion or Grand Champion title will be recorded on the Track and Search Champions/Grand Champions Queensland Honour Board.

#### 3. Utility Dog Excellent Class

##### 3.1 UDX Perpetual Trophy

3.1.1 This trophy is donated by Linda Bennett in memory of the Irish Red and White Setter O.Gr.Ch. Tintookie Finegansrainbo UDX who, at the time of his death, was the only Setter of any variety, anywhere in the world, to hold the title of Obedience Grand Champion.

3.1.2 The award is based on the highest aggregate across four (4) Qualifying scores gained in the UDX class. Applications should be forwarded to:

Mrs L Bennett,  
36 Summerview Avenue,  
Yarrabilba 4207

3.1.3 The UDX Perpetual Trophy must be returned each year prior to the annual presentation event.



## 4. Utility Dog Class

### 4.1 Peter Harden Utility Dog of the Year Perpetual Trophy

4.1.1 This trophy was donated by the family of Dr Peter Harden, a respected senior obedience judge who was killed in a car accident while travelling to judge obedience at the Royal Queensland Show.

4.1.2 The award is based on the highest aggregate across six (6) Qualifying scores gained in the UD class in Zone 1. Applications should be forwarded to:

Mr W Patterson,  
26 Lincoln Green Drive,  
Forestdale 4118.

4.1.3 The Peter Harden UD Dog of the Year Perpetual Trophy must be returned each year prior to the annual presentation event.

## 5. Open Class

### 5.1 Silver and Gold Dumbbell Pins

5.1.1 A competitor may apply for only one (1) Silver Pin and/or one (1) Gold Pin for the same dog across its lifetime.

#### 5.1.2 Silver Pin

(a) To be eligible for award of a Silver Pin the dog must achieve six (6) Qualifying scores of 185 points or more in the Open class within the qualifying period.

(b) A Silver Pin shall only be awarded if the competitor has not applied for a Gold Pin for that dog.

(c) Qualifying scores used for the Silver Pin award may not also be used to apply for a Gold Pin.

#### 5.1.3 Gold Pin

(a) To be eligible for award of a Gold Pin the dog must achieve six (6) Qualifying scores of 190 points or more in the Open class within the qualifying period.

(b) A competitor may apply for a Gold Pin prior to being awarded a Silver Pin. However, award of a Gold Pin will disqualify the dog from eligibility for a Silver Pin.

5.1.4 Applications should be forwarded to:

Mr W Patterson,  
26 Lincoln Green Drive,  
Forestdale 4118.

## 6.2 The Viking Muzzles Open Dog of the Year Trophy

6.2.1 This award is donated by Viking Muzzles.

6.2.2 The award is based on the highest aggregate across six (6) Qualifying scores gained in the Open class but including no more than two (2) Qualifying scores under the same judge. Applications should be forwarded to:

Mrs M Doyle,  
258-268 Boorah Road,  
Jimboomba 4280

## 7. Novice Class

### 7.1 Castastar Kennels Novice Dog of the Year

7.1.1 This award is donated by Warren and Mandy Doyle

7.1.2 The award is based on the highest aggregate across three (3) Qualifying scores gained in the Novice class under at least two different judges; Qualifying scores gained anywhere in Australia may be counted for the purpose of this award.

7.1.3 Applications should be forwarded to:

Mrs M Doyle,  
258-268 Boorah Road,  
Jimboomba 4280.

## 8. RALLY OBEDIENCE

### 8.1 Rally Obedience Dog of the Year

8.1.2 The award is based on the highest aggregate across ten (10) pairs of Qualifying scores gained in both Rally Advanced B and Rally Excellent B classes at the same trial.

8.1.3 Applications should be forwarded to:

Ms S Davies,  
66 Cook Street,  
Forest Lake 4078.



Continued from page 13

## 9. Dances with Dogs

### 9.1 Dances with Dogs Dog of the Year

9.1.1 This award is donated by the Dances with Dogs Club Queensland and will comprise one Dog of the Year award in each of the Heelwork to Music and Freestyle Divisions.

9.1.2 The award in each Division is based on the highest aggregate across three (3) submitted Qualifying Certificates achieved in the relevant Division, irrespective of the class level at which the Qualifying score was achieved.

9.1.3 Applications should be forwarded to:

Ms G Westmore,  
PO Box 335,  
Albany Creek 4035

## Conformation Judges News

The CJC would like to congratulate all trainees who were successful in passing their Theory and/or their Practical examinations this year.

Special congratulations to our new 'All Breeds' judges.

The Committee would appreciate any feedback on the new assessment sheets used at the 'Hands-on' examination.

The new series of lectures are about to commence. Please ensure you are familiar with the rules and regulations.

Each year, just before examinations, we have trainees who are disappointed that they are ineligible to sit for either theory or practical examinations because they have not fulfilled the necessary criteria.

Enjoy your judging!

Shaneen Bendixen  
Chairperson – Conformation Judges Committee



## Durack vendors

### Current directory for August 2015:

#### J.J. Donuts:

Email: joerana.2010@iinet.net.au  
Contact: Gaylene Ph: 0434 405 375

#### Show Suits:

Email: brysnifgundogs@icloud.com  
Contact: Karen Ph: 0428 424 488, Rachelle Ph: 0475 071 614

#### Puddleby Art:

Email: info@puddlebyart.com.au  
Contact: Toshi Ueno Ph: 0410 595 202

#### The Clinic:

Email: clinic.naturaltherapy@gmail.com  
Contact: Bob and Hannah Ph: 0404 643 330

#### Lockyer Valley Sharpening:

Email: kjrau@bigpond.com  
Contact: Keith Ph: 0458 920 088

#### Lead on Animal Leads:

Email: Bev.r.priestley@gmail.com  
Contact: Bev and Ian Ph: 0417 076 402

#### Aust. Professional Groomers Academy Plus Grooming Products:

Email: tanteenyorkshireterriers@gmail.com  
Contact: Suzette Woodruffe and Renee Shaw Ph: 0419 778 239

#### Dog Essentials:

Email: info@dogessentials.com.au  
Contact: Gina Ph: (07) 3801 4800

#### Pet Homes Pty Ltd:

Email: pethomes@optusnet.com.au  
Contact: Phil Ph: 0418 783 555

#### Coffee Cup 2 You Pty Ltd

Email: angbaz@tpg.com.au  
Contact: Barry Ph: 0411 335 466

#### Lilcracka Pet Supplies (Dog Coats/Vet/Dry Bedding /Cooling Coats and Mats):

Email: kay@lilcracka.com  
Contact: Kay Ph: (07) 3200 0418 / 0413 543 835

## Just Genes A. B. Services

### Industry leaders in Semen Freezing

Semen is professionally frozen in straws with clear and permanent printed information ensuring tamper-proof storage.  
For further information feel free to contact us for advice.

- Freezing of semen
- Daily Monitored Storage Facilities
- Quality Assessments
- Competitive Rates
- Importing/Exporting

Phone: (07) 3855 5459 Fax: (07) 3355 7170

8 Minns Place, Everton Park, Qld 4053 E-mail: justgenez@bigpond.com





## Conformation Judges Committee

### Important dates for all Trainee and Aspiring Judges

#### February 2016

**Tuesday 23<sup>rd</sup>** Theory Paper, Part A, State-wide. To commence 6:30pm (Durack candidates in the main building).

Committee members present from 6:00pm

**Friday 26<sup>th</sup>** All First Time applicants, who wish to attend the 2016/2017 lectures, must have their application lodged with the Dogs Queensland Office (grey form) by this date.

A copy of their stewards card must be attached to the application, and completed in accordance with Rule 15 a-k under Regulations for Judges Training as printed in the September 2015 'Dog World'.

#### March 2016

**Tuesday 15<sup>th</sup>** Seminar for First Time Applicants. This will cover rules/stewarding/topographical and skeletal anatomy/dentition and ANKC Glossary of Terms.

Distance Education Candidates are to contact their area facilitator.

**It is compulsory for all first time candidates to attend the entire lecture.**

Please obtain from the Dogs Queensland Office, a current rule book / ANKC Glossary of Terms and Extensions of the breed standards for the Group in which you aspire.

This should be done prior to attending the seminar.

- *Date and time of this seminar is to be confirmed*

#### July 2016

**Thursday 7<sup>th</sup>** Theory Part B and Entrance examinations. State-wide. To commence 6:00 – 6:30pm (Durack candidates in the main building).

Committee members present from 5:30pm

#### July 2016

**Friday 15<sup>th</sup>** **ALL APPLICATIONS FOR 2016/17 CLOSE ON THIS DATE\***

- **Applications for Theory examinations in 2017**
- **Applications for Lecture attendance in 2017** (Additional Groups etc)
- **Applications for Practical examinations in August this year**

For those doing the Practical examination, the yellow form is to be completed and the candidate **MUST** forward a copy of their current steward's card, Open Show Assessments, required Critiques of three breeds and Open Show Judges Card in accordance with Rules 21 and 24 under 'Regulations for Judges Training' as printed in the September 2015 'Dog World'.

**ABSOLUTELY no late applications will be accepted.**

#### August 2016

**Saturday 20<sup>th</sup>** Practical Examination for all candidates within the State, commencing at 8:30am at Durack. Breed Speciality examination dates will be advised.

Please note: All correspondence to the Conformation Judges Committee must be forward directly to the Dogs Queensland Office



## Regulations For Judges' Training Conformation 2015/2016 Self Education Program

### General

1. The Rules and Regulations of the CCC (Q) Ltd Judges Training Program (JTP) are amended from time to time; such amendments are published in the Queensland Dog World. These CCC (Q) Ltd Regulations for the Judges Training Program comply with the philosophy of the ANKC Rules but also accommodate necessities required by the diverse nature of metropolitan and regional Queensland. These regulations are effective immediately.
2. Aspiring judges and all interested members are reminded that membership in the JTP confers no automatic right to become a Judge. Becoming a judge requires successful completion of the syllabus following which the aspiring judge must earn the privilege to be registered and acknowledged as a judge. This privilege may be withdrawn should circumstances warrant and after all facts have been considered.
3. An essential requirement of acceptance, and also continued progression, in the program (including applications for both theory and practical examinations) is a demonstrated significant and continued participation in the management or operation of an affiliated CCC(Q) Ltd Club (supported by documentation signed by at least 2 members of the Club Executive). This documentation MUST accompany ALL applications; for first time applicants, theory examinations, practical examinations, irrespective of the number of Championship groups a Judge may hold. Applications which do not include this mandatory documentation will be rejected unless appropriately documented reasons for extenuating circumstances are approved by the Conformation Judges Committee (CJSC).
4. Members are not permitted to accept judging appointments or sign contracts to judge, until official written notification from the CCC (Q) Ltd., advising their judging status, has been received by them (see also regulations 4a, 18 & 19).
  - 4a. As from June 2010 candidates residing south of Sarina will only be granted Open Show status in any Group after they have successfully completed the theory exams for that particular group. Once they have received a letter from DQ Ltd advising them of their appointment as an Open Show judge for this Group they may then sign contracts to judge the nominated group immediately. Trainee judges who had been granted Open Show status prior to 2010 will retain their status on the judging panel. The maximum number of Groups at Open Show level is four.
5. The CCC (Q) Ltd Judges Training Program is available for eligible members of the CCC (Q) Ltd who are residents of Queensland. Queensland residents who were previously members of other ANKC Affiliates, and were previously in an equivalent training program, will be recognised under a reciprocal agreement, provided all requirements are fulfilled.
6. Any persons who were previously resident in another State or Territory, (and members of that State or Territory) and were not in the Judges Training Program, and who are now bona-fide residents of Queensland, may apply to come into the program upon furnishing a letter from their previous controlling body showing they comply with the entry Requirements for Aspiring Judges.
7. The Judges Training Program is a continuous program. Persons who are unable to continue in the system through illness, injury or issues of a personal nature, should apply in writing to the CCC(Q) Ltd for leave of absence for a suitable period.
8. A member who has previously held Championship Judges status may apply for reinstatement. Where the period of absence from the Judges List is four years or more, reinstatement will be considered only after the member concerned has passed 90% of an Open Book examination on a number of the major breeds in the Group(s) plus those Breeds which have been introduced by the ANKC during their absence. In some instances, particularly for longer periods of absence, the CJC may require a practical assessment which would be conducted using similar procedures to the Practical Exam as described in regulations 27 – 32, and at a date to be determined by the CJC. Should the candidate fail the assessment, they would be added to the Open Show Panel and required to judge a further 25 dogs before applying for a standard Practical Exam. Applications for reinstatement are to be approved by the Committee of the CCC (Q) Ltd.
9. Any Trainee or Aspiring Judge who is found to have engaged in unsportsmanlike or unprofessional behaviour, or has breached the CCC(Q) Ltd Rules or the CCC(Q) Ltd Code of Ethics or the CCC(Q) Ltd Judges Code of Ethics, or is not fulfilling training regulations, will be held accountable and may be suspended or removed from the Training Program and / or the Judges Panel. The CJC, in considering whether to remove or suspend, will consider all the facts and will provide their recommendation to the committee of the CCC (Q) Ltd. A right of appeal is available and an appeal may be made to the CCC (Q) Ltd in writing within 14 days of the official notification of the removal or suspension.
10. Where a Trainee fails to comply with the Rules and Regulations of the training scheme within 18 months of their acceptance into the scheme, the CJC may recommend to the CCC(Q) Ltd that the person be removed from the Judges Panel. The CJC, in considering whether to remove a person from the Judges Panel, will consider all the facts and will provide their recommendation to the Committee of the CCC (Q) Ltd. A right of appeal is available and an appeal may be made to the CCC (Q) Ltd in writing within 14 days of the official notification of the removal.
11. Stewarding requirements listed in Regulation 21 must be completed each and every year. If through sickness, injury or other involuntary circumstances, a Trainee Judge cannot fully satisfy the requirements of the Judges Training Program, the CJC may approve an extension of the time limit. Applications for such leave of absence must be submitted in writing immediately the pertinent circumstances arise.
12. The results of written examination papers are valid for life. The CJC reserves the right to use an alternative examination paper whenever it is deemed necessary.



## Definitions

### 13. Terms used in these Regulations are defined below:

- a. First Time Applicant (Aspiring Judge): A person accepted into the Judges Training Program as a First Time Applicant.
- b. Trainee (Judge): A person who is qualified to judge one or more Breed(s) / Group(s) at Open Shows within Queensland.
- c. Championship Judge: A person who is qualified to judge individual Breeds, or one or more groups at Championship level. The CCC (Q) Ltd must be notified in writing of all appointments, including overseas appointments. .
- d. Primary Group: This is normally the Group in which the candidate first bred / exhibited dogs.
- e. S.E. Qld: The training regions covered by Brisbane (Durack attendees) and the Darling Downs.

## Entry Requirements for first time applicants

Applications from First Time Applicants wishing to enter the Conformation Judges Training Program must be submitted by no later than 28th February each year. Applications must be made on the prescribed form (available on the CCC (Q) Ltd website) and all details are to be completed, in full. Applicants who fulfill the criteria in Regulation 15, and who wish to enter the program must achieve a 75% pass in an exam on:

- CCC(Q) Ltd Rules •Skeletal & Topographical Anatomy
- Dentition • Glossary of Terms

### 15. Members must satisfy the following criteria in order to be eligible for acceptance as a First Time Applicant:

- a. Have held financial membership of the CCC (Q) Ltd or another ANKC Affiliate for a minimum of 8 consecutive years, or be the son / daughter of a financial member, who has been a financial member for not less than 8 consecutive years, and have been active in canine affairs (see Regulation 3).
- b. Be a minimum age of 18 years of age.
- c. Have bred at least three litters under their own or shared prefix.
- d. Have bred or exhibited to their title at least two champions.
- e. Have attended at least three lectures, run by the Dog Stewards Association, or equivalent.
- f. Have performed the duties of a Steward at least 12 times in the 12 months prior to the application, at least 6 as a Ring Steward, (with no more than 3 at Open Shows), the others may be either Writing or Assembling, (with no more than 3 at Open Shows). A copy of the applicant's yellow Steward's Card must accompany the Application Form.
- g. Apply for the Group in their Primary Group.
- h. Achieve a pass of 75% at an Entrance Examination, which will take place on the first Thursday in July each year. The examination will be conducted State-wide on the day, and will be on the topics listed in Regulation 14. Applicants who fail may re-apply the following year.
- i. First Time Applicants must attend all Breed lectures for their Primary Group commencing in October, as published in the Dog World magazine. A Trainee may miss a maximum of 2 lectures, 1 prior to the Part A exam and 1 prior to the Part B exam. If a trainee misses more than this without special written dispensation from the CJC, the trainee will not be eligible to sit for the

written examinations. Any missed lecture requires 1000 word essay # on the Breeds covered at the lecture.

# Essays are to contain a history and description of the breed, its purpose and all relevant requirements contained in the Breed Standard and are to be illustrated with drawings pictures. Failure to submit the essays within 14 days of the lecture or by the next scheduled lecture date will render the Trainee ineligible to take an examination until the missed Breed lectures are attended. \* When no lecture and/or no dogs of a Breed are present at a scheduled Breed lecture, Trainees who attend will be required to complete an essay as per the above format within 14 days of the lecture or by the next scheduled lecture date. A trainee must be present for and participate in the entire lecture in order to be credited with attendance.

Applicants will then be examined as per Regulation 25. Where there are insufficient candidates for Group Lectures, it may necessitate the first time applicant attending lectures for the Group marked 2nd choice (Durack only), subject to CJC approval. This group will qualify as the Candidate's Primary Group.

- j. Have demonstrated over numerous and recent years strict compliance with the CCC(Q) Ltd Rules and Code of Ethics and be suitable in all other respects, and have demonstrated a satisfactory code of behaviour in accordance with the best interests of showing and breeding purebred dogs.
  - k. In the initial application in the Judges Training Program, all applicants must certify that they are capable of judging in accordance with the Rules and in the normally accepted manner. Thereafter, the certification becomes part of the annual renewal application for judging licences.
16. Where the CCC (Q) Ltd, in its sole and unfettered discretion, considers that exceptional circumstances exist, it may grant dispensation to a candidate from compliance with regulations 15c and / or 15d.
  17. All Trainee Judges and Aspiring Judges are required to support all training activities, including assistance with Breed lectures, entries at Open Shows, and make full use of the CCC(Q) Ltd library for general research.
  18. After a First Time Applicant, residing south of Sarina, successfully completes part A and part B theory exams (with an overall average of 75% or better) they will receive a letter from the CCC (Q) Ltd confirming their appointment as an Open Show Judge (for their primary Group only) and hence eligible to judge that Group at Open shows immediately. They may also apply to attend lectures and sit theory exams in their next Group. Once they have received this formal written notification from the CCC (Q) Ltd Office, they may then accept and sign contracts for their primary group. At their first appointment, which must be a complete Group, the candidate must arrange for an assessor to assess them at shows for Breeds within their primary group. Note: The Trainee Judge must judge a complete Group before judging Breed specialty Open shows for Breeds within their primary group.



- 19. After a First Time Applicant, residing Sarina North, successfully completes part A and part B theory exams for their primary Group they will receive a letter confirming their appointment as an Open Show Judge and will be offered up to seven Open Show Groups; they may also apply to attend lectures and sit theory exams in their next Group. Once they have received this formal written notification from the CCC(Q) Ltd Office they may then accept and sign contracts and judge Open Shows immediately, however the first judging appointment must include the candidate's complete primary group, and they must be assessed at that appointment. Each of these Groups must be judged three times Sarina and north before judging Groups South of Sarina.
- 20. Any First Time Applicant who fails the theory examination in their Primary Group must re-attend lectures and re-sit the written examination the following year. If the First Time Applicant fails the examination the third time, they will be removed from the Judges Training Program for a period of two years before reapplying.

## Stewarding Requirements for all Judges in the Program

- 21. Starting 1st July and terminating 30th June each year, the following Stewarding requirements must be fulfilled each and every year, irrespective of whether the Trainee / Open Show Judge intends applying for a theory or practical exam. Note: NO dispensation to these stewarding requirements will be considered.
  - a. Judges with less than 3 Groups at Championship Level must complete a minimum of 12 Queensland appointments (at least 6 as a Ring Steward in All-Breeds Shows, with no more than 3 at Open Shows, or whole of group shows (e.g. Toy Dog Club Show), with no more than 3 at Open Shows. The remainder may be either Writing or Assembling, with no more than 3 of these at Open Shows. Judges who are resident in S.E. Qld must complete at least six (6) appointments within that area. Note: stewarding for 2 or more Groups at the same show on the same day is classified as ONE appointment.
  - b. Judges licensed in 3, 4 or 5 Groups at Championship Level will complete a minimum of 6 Queensland appointments (at least three as a Ring Steward at All-Breeds Champ Shows, or whole of group shows (e.g. Toy Dog Club Show), The others may be either Writing or Assembling at Champ Shows. Judges who are resident in S.E. Qld must complete at least six (6) appointments within that area.  
Note: stewarding for 2 or more Groups at the same show on the same day is classified as ONE appointment.
  - c. The stewarding requirements are to ensure that candidates not only provide valuable assistance with the operation of shows but also, and more importantly, enable them to observe the judging of Breeds in complete Groups. Consequently the function of Show Manager does not qualify for the aforementioned requirements. It should also be noted that Assembly Stewarding at a Royal Show in Queensland is classified as an "Assembly Steward" not as a "Ring Steward".
  - d. For Judges holding 6 Groups at Championship Level, Stewarding is optional. All Breeds Judges may Steward, Write or Show Manage (provided appropriately qualified).

- e. All Judges in the Judges Training Program must maintain and produce, upon request, an official CCC (Q) Ltd Stewards Card.
- f. The Judge's original completed stewarding card, (Judge to retain a copy), must be submitted to the CCC(Q) Ltd Office after 30th June and before 15th July together with a completed "Judges Training Profile" (the prescribed form is available from The CCC (Q) Ltd website). This documentation must accompany any application to attend lectures, or sit for any theory or practical examination. Note: Failure to comply with ALL aspects of Regulations 11 and 21 may result in removal from the Open Show Judging Panel.

## Theory Examinations

- 22. Each year, a Trainee must attend all breed lectures\* and sit for a written paper for that Group (the application to attend lectures is to be submitted before 15th July using the prescribed form available from the CCC(Q) Ltd website). Trainees may only apply for 1 group in any year (October to July); split groups (i.e. part A for 1 group and part B for a different group) are not allowed. A Trainee may miss a maximum of 2 lectures, 1 prior to the Part A exam and 1 prior to the PartB exam. If a trainee misses more than this without special written dispensation from the CJC, the trainee will not be eligible to sit for the written examinations. This must be applied for within 14 days of the missed lecture. Any missed lecture requires a 1000 word essay # on the Breeds covered at the lecture and is to be submitted within 14 days of the lecture or by the next scheduled lecture date. Essays are to contain a history and description of the breed, its purpose and all relevant requirements contained in the Breed Standard and are to be illustrated with pictures/drawings. On passing both theory exams (with an overall average of 75% or better), they may apply for a Practical (Hands On) examination in that Group (if sufficient numbers of dogs Judged; see regulation 26) and may apply to attend lectures for an additional Open Show Group. Applications for the practical exam on the prescribed form (available from the CCC (Q) Ltd website) are required NO LATER THAN 15th JULY.

\*When no lecture and/or no dogs of a Breed are present at a scheduled Breed lecture, Trainees who attend will be required to complete an essay as per the above format. Failure to submit the essays within 14 days of the lecture or by the next scheduled lecture date will render the Trainee ineligible to take an examination until the missed Breed lectures are attended. A trainee must be present for and participate in the entire lecture in order to be credited with attendance.

Critiques required following the breed lecture are to be in the hands of the Group Coordinator within 14 days of the lecture or by the next scheduled lecture date.

- 23. All Trainee Judges who are considered by the CJC to reside a distance from the normal venue for lectures that would pose a travelling risk, are to study through 'Distance Education'. i.e. All trainee judges not attending lectures held at Durack will study by Distance Education. The Distance Education curriculum is available on the Dogs Qld website under "Judges Training Documents". Candidates should check regularly for any amendments. Metropolitan trainees may, in special circumstances, be allowed to study by Distance Education. They must apply in writing to the CCC (Q) office, giving their reasons, by the 15th July.



24. a. Trainees must maintain and produce, upon request, an official CCC (Q) Ltd Open Show Judges Card. This card will be a record of all Open Show Judging appointments and the number of dogs judged. Responsibility of maintaining these records resides solely with the Trainee who is also recommended to maintain a duplicate copy in a secure place.
- b. Trainees must maintain an Assessment Card. This card is to be signed by 2 different Accredited Championship Judges who have assessed the Trainee while judging each group on different appointments. One of these assessments must be the first time they judge each group. The assessor must have held a Championship licence for the group they are assessing for a minimum of 5 years. A minimum of two assessments per group are required before applying for the practical examination. The candidate is responsible to ensure the assessments are done and recorded. Open Show Assessment forms are available on the CCC (Q) Ltd website.
- While assessments are not compulsory after a Trainee has acquired four Championship Groups, the CJC reserves the right to further assess any Trainee at any appointment.
- c. The Group Training Coordinators will maintain attendance at all Breed lectures and liaise with the CJC regarding records at progress of candidates. Copies of these records are to be supplied to the CCC (Q) Ltd office.
25. a. All candidates, State-wide, will take the first Theory Examination on the last Tuesday in February. A pass mark of 75% is required.
- b. All candidates state-wide will take the second Theory Examination on the first Thursday in July. A pass mark of 75% is required.
- c. Should a candidate fall short of 75% in either paper, then an average will be taken on the two papers. A pass mark of 75% is required.
- d. Should a candidate not achieve an overall average of 75% or better, any exam failed must be re-sat in the next session for that part of the Group. Trainees may only apply for exams in one group in any year (October to July); split Groups (i.e. part A for one group and part B for a different group) are not allowed.
- e. The examination questions will be taken from the current ANKC Breed Standards.
- f. Each candidate will sign a master sheet, acknowledging receipt of a numbered paper. No assessor will know whose paper they mark.
- g. NO deferred exams will be given for a candidate who is away for any reason. All dates and times for examinations are set well in advance and hence no excuse will be allowed. In extenuating circumstances such as enforced work commitments, a candidate may make an application to sit the exam at a different location on the same date; such applications will be considered by the CJC. Note: holidays and judging appointments are not extenuating circumstances.
- h. Candidates who fail a theory examination may request a re-mark of their paper. This request must be made in writing, to the General Manager CCC (Q) Ltd within 14 days of receiving advice of the results of the examination. The re-marking will be done by three members of the CJC (none of whom marked the original paper), who will separately re-mark the paper without conferring. Those re-marking the paper will not know the candidate's name.

## Applications for Practical Examinations

26. a. Once a Trainee Judge has judged a minimum of 150 dogs at Open Show Group level and has attended 3 different Breed Specialties within that Group and has completed 5 written critiques on dogs examined at each event, (15 in total), they may apply to take their Practical Examination (1 Group per year) and are recommended to re-attend Breed lectures for that group. Note: You must attend the entire breed show or a minimum of 50 dogs at that show. Breeds with different varieties are counted as one breed. e.g. Poodles.

The critiques on the 15 dogs examined must be countersigned by an Accredited Judge for that Group present on the day. The CJC would prefer that this was done in conjunction with the Group co-coordinator. Trainers in remote areas who are unable to attend a Specialty in the Group are to submit 15 photos of 15 dogs accompanied by critiques on each of the dogs. These may be obtained from the internet or books. The candidate's original Assessment Card and Stewarding Card (Regulations 21 & 24b) must accompany the application (the candidate is to retain copies). This examination will take place for all eligible Trainees at Durack on the 34th or 35th weekend of each year; however the date may be varied and will be confirmed each year.

A Trainee Judge will only be permitted to elevate to Championship status in 1 Group per year. NB - Sweepstakes and General Specials numbers at Open Shows are not to be included (CJSC Sweepstakes may be included). Note: - dogs entered in multiple classes at any show can only be counted once.

- b. Application for the Practical Examination must be made on the prescribed form (available from the CCC (Q) Ltd website), completing all details. This form must be received NO LATER THAN 15th JULY in any year. Applications may be submitted "subject to passing the part B theory exam".
- c. Candidates must have judged the Group, for which application is made, at least four times for at least two different clubs. 2 specialty Breed shows each with an entry exceeding 20 dogs exhibited may be counted as 1 of the 4 Groups. It should be noted that candidates must judge at least 3 complete Groups.
- d. Any candidate who fails a practical examination, must judge another 25 exhibits in that group to be eligible for re-examination. This can be either a full Group or Specialty Show.
- e. "Mentoring" Open Show Trainees who are resident Sarina and north may participate in a "mentoring" scheme. Only Accredited Queensland Championship Judges may act as mentors. A Trainee may count dogs examined under the supervision of a Mentor Judge as part of their training. Under this system, Open Show Trainee Judges must judge a minimum of 100 dogs at Open Shows and examine a maximum of 100 dogs under the supervision of a Mentor Judge (a total of 200 dogs.) Any Trainee who participates must not exhibit under that Judge on that day.



- f. When a Judge obtains Championship status in a Group, for their first group, they must then judge at least 2 groups OR a minimum of 100 dogs (total) in Queensland before they can accept appointments in that Group interstate or overseas. The Judge is required to advise the CJC, (via the CCC (Q) Ltd Office), within two weeks of signing the contract as they may be assessed at these shows.
- g. When a Judge obtains Championship status in a Group they may apply for a further Group at Open Show status to bring them up to:-
  - (a) 4 Open Show Groups for candidates residing south of Sarina.
  - (b) 7 Open Show Groups for candidates residing Sarina and north; each of these Groups must be judged at least 3 times before signing contracts for Open Shows south of Sarina.

31. A shortfall in the number of exhibits or examiners will not automatically invalidate an examination. Provided that the Candidate is given an explanation and that the Candidate agrees that the examination continue, the examination will not be declared null and void. No objections or protests because of these discrepancies will be considered thereafter. Should the candidate elect not to proceed with the examination, NO special examination will be arranged.
32. In order to obtain a pass, 2 of the 3 examiners must mark their papers with a PASS in EACH of the 3 classes.
  - 32a. Once a candidate receives formal written notification of passing the practical examination, they may accept and sign contracts for shows to be conducted after the 1st January the following year.

## Practical Examination (Hands-On Exam)

27. All Assessors and Chairpersons will sign a confidentiality agreement to ensure the security of all decisions; and refrain from any communication outside of this agreement.
28. Each candidate and assessor will receive a score sheet. No markings will be made on these score sheets until the examination commences. A written explanation of the procedure will be given to the candidate prior to the examination day. Any candidate, who is unsure of the procedure on the day, has the right to ask for clarification from the Chairperson or any member of the CJC.
29. The examination will consist of two classes, each class of a different Breed and consisting of 5 or 6 dogs of either sex over the age of six months, and a third mixed class of 5 or 6 dogs of either sex over the age of 6 months, excluding the 2 Breeds previously used. The examination will include being assessed on "ring craft".
30. The examination will be conducted by 3 Judges appointed by the CCC (Q) Ltd. A fourth person, also appointed by the CCC (Q) Ltd, will act as Chairperson and Coordinator.
  - a. Both the candidate and examiners will examine the exhibits and determine placings 1 to 5. The examiner will examine the dogs first then the candidate will examine the dogs. These placings will be recorded on the score sheet and without communicating their decisions to any other candidate or examiner.
  - b. Each candidate will be interviewed by each examiner independently.
  - c. All questions pertaining to the Breed are expected to be answered. The candidate will only be examined on the exhibits in the respective class.
  - d. Questions may be taken from current ANKC Breed Standards and the Glossary of Terms.
  - e. Candidates will do their assessments allowing 2 minutes per exhibit.
  - f. The examiner will record on the score sheet comments relating to the candidate. This must be completed whether passing or failing a candidate.
  - g. At NO time will the examiners confer.
  - h. At NO time will the examiner discuss with any candidate, either on the day or when results have been notified, whether they have passed or failed the candidate. To do so is a breach of confidentiality.
  - i. All papers remain confidential and the property of the CCC (Q) Ltd.

## New Breeds

33. Where a Breed newly introduced into Australia or a Breed which has been transferred from one Group to another, and has been approved by the ANKC, all judges will be notified by the CCC (Q) Ltd. and advised of the relevant Breed Standard and any accompanying information.
34. Reserved.
35. Reserved.

## Eligibility for a single Breed Championship Licence

36. (For German Shepherd Dog Specialty licence see Dogs Qld website for details) Members may apply for elevation to Championship Status as a Single Breed Judge. The following criteria must be satisfied by the applicant:
  - a. Provide evidence of eight years continuous financial membership, activity and experience as a breeder and exhibitor.
  - b. Have titled or bred a minimum of five Champions.
  - c. Bred at least three litters under their own, or shared, prefix.
  - d. Attend lectures run by the Dog Stewards Association, or equivalent.
  - e. In the 12 months prior to applying, complete at least 4 appointments as ring steward at Queensland Championship full Groups.
  - f. Attend the appropriate Breed lecture night/s.
  - g. Achieve a pass of 75% on a written examination on:
    - CCC (Q) Ltd Rules. • Skeletal and Topographical Anatomy. • Dentition.
    - Glossary of Terms; and also a pass of 75% on a written examination of the Breed. This exam will be held at the same date as the Part B theory exams. If all the papers in Regulation 36g are passed, then the candidate will take
  - h. the "Hands-On" examination at a date to be determined.
37. A practical Examination for a Single Breed Licence will consist of one class of 5 or 6 dogs over the age of 6 months, and 1 class of 5 or 6 bitches. In Breeds with more than 1 variety this rule may be modified to accommodate different varieties of the Breed.
38. Where an applicant fails a Single Breed Examination, they will not be required to obtain additional practical experience to be eligible to apply for another examination in the following year, providing he / she applies by the specified time, and providing it is the same Breed.

Regulations for Judges Training (Conformation) - as amended September 2015



## Scheduled Breed Lectures

Scheduled Breed Lectures are listed below. It is compulsory for Open Show candidates to attend all Breed Lectures and, although elevation candidates do not have to attend these lectures, it is in their best interest to do so.

The following provisional list of dates for metropolitan breed lectures for each group is contingent upon whether lectures for a particular group will be conducted in the 2015 / 2016 training season.

This decision is dependent upon the number of applications received for each group and will not be determined until August, and subsequently published in the October or November Dog World. If you require confirmation prior to this publication, please contact the relevant Group Coordinator.

Please note: Any trainee not attending the metropolitan lectures at Durack must complete the Distance Education Curriculum. This is available on the Dogs Queensland website under 'Committees - Judges Training Documents'.

Application for dispensation from any of the rules and regulations contained herein must be submitted in writing, giving reasons, to the Conformation Judges Committee, via the Office of Dogs Queensland for possible consideration. Should a lecture need to be re-scheduled for any reason whatsoever, this then will become the official lecture for that breed.

## Regional Training Facilitators

<b>Cairns:</b>	Mr. F.B. James (07) 4045 2036
<b>Townsville:</b>	Mrs. B. Marker (07) 4779 7578
<b>Mackay:</b>	Mrs. R. Nicholson 0418 776 841
<b>Rockhampton:</b>	<b>To Be Advised</b>
<b>Gladstone:</b>	Mr. R. Ogden (07) 4978 2690
<b>Wide Bay:</b>	Mrs. J. Armatys (07) 4157 2758 Mrs. M. Hobson (07) 4124 4628
<b>Toowoomba:</b>	<b>To Be Advised</b>
<b>Nanango:</b>	Mr. K. Iggleden (07) 4163 7374
<b>Sunshine Coast:</b>	Mrs. H. Weil (07) 5494 7496

### GROUP 1 (TOYS) COORDINATORS

<b>Mrs M. Rose</b> <b>Ph:</b> (07) 3372 1163 <b>Email:</b> roepin@tpg.com.au	<b>Mrs J. Watt</b> <b>Ph:</b> (07) 3372 3654 <b>Mob:</b> 0418 153 115 <b>Email:</b> wachowa@ozemail.com.au
--	---

Lectures are held 1<sup>st</sup> and 3<sup>rd</sup> Tuesday of each month, commencing at 7.00pm

First Half			
<b>October</b>	6 <sup>th</sup>	2015	Miniature Pinscher/English Toy Terrier/Affenspinscher
<b>October</b>	20 <sup>th</sup>	2015	Havanese/Lowchen
<b>November</b>	17 <sup>th</sup>	2015	Chihuahua (Long and Smooth Coat)
<b>December</b>	1 <sup>st</sup>	2015	Australian Silky Terrier/Yorkshire Terrier
<b>January</b>	19 <sup>th</sup>	2016	Maltese/Pug
<b>February</b>	2 <sup>nd</sup>	2016	Mini Group/Revision
<b>February</b>	23 <sup>rd</sup>	2016	Exam Part A Theory
Second Half			
<b>March</b>	1 <sup>st</sup>	2016	Chinese Crested/Pomeranian
<b>March</b>	15 <sup>th</sup>	2016	Pekingese/Papillon
<b>April</b>	19 <sup>th</sup>	2016	Bichon Frise/Japanese Chin
<b>May</b>	3 <sup>rd</sup>	2016	Italian Greyhound/Griffon Bruxellois
<b>May</b>	17 <sup>th</sup>	2016	Cavalier King Charles Spaniel/King Charles Spaniel
<b>June</b>	7 <sup>th</sup>	2016	Tibetan Spaniel/Russian Toy
<b>June</b>	21 <sup>st</sup>	2016	Mini Group/Revision
<b>July</b>	7 <sup>th</sup>	2016	Exam Part B Theory

### GROUP 2 (TERRIERS) COORDINATORS

<b>Mrs S. Hewinson</b> <b>Ph:</b> (07) 3818 6464 <b>Mob:</b> 0422 721 486 <b>Email:</b> hewinson@gmail.com	<b>Mrs J. Ireland</b> <b>Ph:</b> 07 3814 3069 <b>Mob:</b> 0407 275 791 <b>Email:</b> graedon33@hotmail.com
---	---

Lectures are held 2<sup>nd</sup> and 4<sup>th</sup> Tuesday of each month, commencing at 7.00pm

First Half			
<b>October</b>	13 <sup>th</sup>	2015	Airedale Terrier/Manchester Terrier
<b>October</b>	27 <sup>th</sup>	2015	Irish Terrier/American Staffordshire Terrier
<b>November</b>	10 <sup>th</sup>	2015	Sealyham Terrier/Skye Terrier
<b>November</b>	24 <sup>th</sup>	2015	Jack Russell Terrier/Parson Russell Terrier
<b>December</b>	8 <sup>th</sup>	2015	Border Terrier/Soft Coated Wheaten Terrier
<b>January</b>	12 <sup>th</sup>	2016	West Highland White Terrier/Norfolk Terrier/Norwich Terrier
<b>February</b>	9 <sup>th</sup>	2016	Revision - Mini Group
<b>February</b>	23 <sup>th</sup>	2016	Exam Part A Theory
Second Half			
<b>March</b>	8 <sup>th</sup>	2016	Lakeland Terrier/Bedlington Terrier
<b>March</b>	22 <sup>nd</sup>	2016	Bull Terrier/Bull Terrier (Miniature)/Tenterfield Terrier
<b>April</b>	12 <sup>th</sup>	2016	Australian Terrier/Cairn Terrier
<b>April</b>	26 <sup>th</sup>	2016	Scottish Terrier/Fox Terrier (Smooth and Wire)
<b>May</b>	10 <sup>th</sup>	2016	Staffordshire Bull Terrier/Kerry Blue Terrier
<b>May</b>	24 <sup>th</sup>	2016	Dandie Dinmont Terrier/Cesky Terrier/Glen of Imaal Terrier
<b>June</b>	14 <sup>th</sup>	2016	Welsh Terrier/German Hunting Terrier
<b>June</b>	28 <sup>th</sup>	2016	Revision - Mini Group
<b>July</b>	7 <sup>th</sup>	2016	Exam Part B Theory



### GROUP 3 (GUNDOGS) COORDINATORS

<b>Mrs Norma Zimmerle</b> Ph: (07) 3341 3867 Email: nzimmerl@bigpond.net.au	<b>TBA</b>
---	------------

Lectures are held 2<sup>nd</sup> and 4<sup>th</sup> Thursday of each month, commencing at 7.00pm

#### First Half

October	22 <sup>nd</sup>	2015	Cocker Spaniel/Cocker Spaniel (American)
November	12 <sup>th</sup>	2015	English Setter/Gordon Setter/Irish Setter/Irish Red and White Setter
November	26 <sup>th</sup>	2015	English Springer Spaniel/Welsh Springer Spaniel
December	10 <sup>th</sup>	2015	Clumber Spaniel/Sussex Spaniel
January	7 <sup>th</sup>	2016	Brittany
January	21 <sup>st</sup>	2016	Field Spaniel/Irish Water Spaniel
February	11 <sup>th</sup>	2016	Revision
February	23 <sup>rd</sup>	2016	Exam Part A Theory

#### Second Half

March	10 <sup>th</sup>	2016	Lagotto Romagnolo/Weimaraner/Weimaraner (Long Haired)
March	24 <sup>th</sup>	2016	Chesapeake Bay Retriever/Nova Scotia Duck Tolling Retriever/Italian Spinone/Large Munsterlander
April	7 <sup>th</sup>	2016	Curly Coated Retriever/Labrador Retriever
April	21 <sup>st</sup>	2016	Hungarian Vizsla/Hungarian Wired Haired Vizsla
May	12 <sup>th</sup>	2016	Golden Retriever/Bracco Italiano
May	26 <sup>th</sup>	2016	Flat Coated Retriever/Pointer
June	9 <sup>th</sup>	2016	German Shorthaired Pointer/German Wirehaired Pointer
June	23 <sup>rd</sup>	2016	Revision
July	7 <sup>th</sup>	2016	Exam Part B Theory

### GROUP 4 (HOUND) COORDINATORS

<b>Mrs S. Tringham</b> Ph: (07) 3294 6697 Mob: 0423 361 005 Email: susantringham@bigpond.com	<b>Mrs T. McDonald</b> Ph: (07) 3294 6717 Mob: 0407 694119 Email: shasdin@ecn.net.au
---	---

Lectures are held 1<sup>st</sup> and 3<sup>rd</sup> Wednesday of each month, commencing at 7:00pm

#### First Half

October	21 <sup>st</sup>	2015	Ibizan, Pharaoh Hound, Critiquing
November	4 <sup>th</sup>	2015	Afghan Hound, Greyhound
November	18 <sup>th</sup>	2015	Saluki, Sloughi, Azawakh
December	2 <sup>nd</sup>	2015	Deerhound, Irish Wolfhound

#### Christmas/New Year Break

January	20 <sup>th</sup>	2016	Borzoi, Basenji
February	3 <sup>rd</sup>	2016	Whippet
February	17 <sup>th</sup>	2016	Revision
February	23 <sup>rd</sup>	2016	Part A Theory Examination

#### Second Half

March	2 <sup>nd</sup>	2016	Basset Hound, Petit Basset Griffon Vendeen
March	16 <sup>th</sup>	2016	Grand Basset Griffon Vendeen, Basset Fauvre De Bretagne
April	6 <sup>th</sup>	2016	Beagle, Foxhound, Harrier
April	20 <sup>th</sup>	2016	Dachshund (All Varieties), Finnish Spitz
May	4 <sup>th</sup>	2016	Bloodhound, Norwegian Elkhound, Bluetick Coonhound, Hamiltonstovare, Otterhound, Black and Tan Coonhound
May	18 <sup>th</sup>	2016	Rhodesian Ridgeback, Portuguese Podengo (All Varieties)
June	1 <sup>st</sup>	2016	Mini Group - Revision
July	7 <sup>th</sup>	2016	Part B Theory Examination

### GROUP 5 (WORKING DOGS) COORDINATORS

<b>Mr Graham Kerr</b> Ph: (07) 55468112 Mob: 0407110747 Email: graham@smartpets.com.au	<b>Mr Michael Yates</b> Mob: 0409 457 208 Email: vyates@salieridobes.com
---	--

Lectures are held 1<sup>st</sup> and 3<sup>rd</sup> Thursday each month, commencing at 7.00pm

#### First Half

October	1 <sup>st</sup>	2015	Intro to Judging, handling and Assessment of Group 5 Dogs. Puli, Pumi, Komondor
October	15 <sup>th</sup>	2015	German Shepherd Dog, German Shepherd (LSC)
November	5 <sup>th</sup>	2015	Maremma Sheepdog, Kuvasz, Tatra Shepherd Dog
November	19 <sup>th</sup>	2015	Border Collie, Norwegian Buhund
December	3 <sup>rd</sup>	2015	Collie (Rough & Smooth), Shetland Sheepdog
December	17 <sup>th</sup>	2015	Australian Shepherd, White Swiss Shepherd

#### Christmas/New Year Break

January	7 <sup>th</sup>	2016	Bouvier des Flandres, Briard
February	4 <sup>th</sup>	2016	Revision
February	23 <sup>rd</sup>	2016	Part A Theory Examination

#### Second Half

March	3 <sup>rd</sup>	2016	Belgian Shepherd Dog (All Varieties), Dutch Shepherd
March	17 <sup>th</sup>	2016	Bearded Collie, Old English Sheepdog
April	21 <sup>st</sup>	2016	Welsh Corgi (Pembroke & Cardigan)
May	5 <sup>th</sup>	2016	Swedish Vallhund, Finnish Lapphund, Swedish Lapphund
May	19 <sup>th</sup>	2016	Australian Cattle Dog, Australian Kelpie, Australian Stumpy Tail Cattle Dog
June	2 <sup>nd</sup>	2016	Bergamasco Shepherd, Polish Lowland Sheepdog, Pyrenean Sheepdog (Longhaired)
June	16 <sup>th</sup>	2016	Revision
July	7 <sup>th</sup>	2016	Part B Theory Examination







## GROUP 6 (UTILITY) COORDINATORS

<b>Mrs V. Schneider</b> Mob: 0407 115 674 Email: tanoshii@tanoshiikennels.com			<b>TBA</b>
Lectures are held 1 <sup>st</sup> and 3 <sup>rd</sup> Monday (5 <sup>th</sup> if required) each month, commencing at 7.00pm			
<b>First Half</b>			
<b>October</b>	19 <sup>th</sup>	2015	Newfoundland/Portuguese Water Dog
<b>November</b>	2 <sup>nd</sup>	2015	Tibetan Mastiff/Pyrenean Mountain Dog/ Anatolian Shepherd Dog
<b>November</b>	16 <sup>th</sup>	2015	Akita/Shiba Inu/Akita Japanese
<b>December</b>	7 <sup>th</sup>	2015	Schnauzer (All Varieties)
<b>January</b>	18 <sup>th</sup>	2016	German Pinscher/Doberman/Spanish Mastiff
<b>February</b>	1 <sup>st</sup>	2016	Boxer/Russian Black Terrier
<b>February</b>	15 <sup>th</sup>	2016	<b>Revision</b>
<b>February</b>	23 <sup>rd</sup>	2016	<b>Exam Part A Theory</b>
<b>Second Half</b>			
<b>March</b>	7 <sup>th</sup>	2016	Bullmastiff/Cane Corso
<b>March</b>	21 <sup>st</sup>	2016	Dogue De Bordeaux/Pyrenean Mastiff
<b>April</b>	4 <sup>th</sup>	2016	Neopolitan Mastiff/Mastiff
<b>April</b>	18 <sup>th</sup>	2016	Alaskan Malamute/Siberian Husky/Canadian Eskimo Dog
<b>May</b>	16 <sup>th</sup>	2016	Rottweiler/Bernese Mountain Dog/Central Asian Shepherd Dog
<b>June</b>	6 <sup>th</sup>	2016	St Bernard/Samoyed/Leonberger
<b>June</b>	20 <sup>th</sup>	2016	<b>Revision</b>
<b>July</b>	7 <sup>th</sup>	2016	<b>Exam Part B Theory</b>

## GROUP 7 (NON SPORTING) COORDINATORS

<b>Mrs G. Hovey-Jacobs</b> Mob: 0400 826 333 Email: gwenj2@spin.net.au			<b>Mr I. Rasmussen</b> Ph: (07) 5464 1053 Email: ahmadi@saluki.com.au
Lectures are held 2 <sup>nd</sup> and 4 <sup>th</sup> Wednesday of each month, commencing at 7.00pm			
<b>First Half</b>			
<b>October</b>	14 <sup>th</sup>	2015	Boston Terrier/Tibetan Terrier
<b>October</b>	28 <sup>th</sup>	2015	Keeshonds/Schipperke
<b>November</b>	11 <sup>th</sup>	2015	Chow Chow/Shar Pei
<b>November</b>	25 <sup>th</sup>	2015	Lhasa Apso/Shih Tzu
<b>January</b>	27 <sup>th</sup>	2016	Dalmatian/Eurasier
<b>February</b>	10 <sup>th</sup>	2016	<b>Revision – Mini Group</b>
<b>February</b>	23 <sup>rd</sup>	2016	<b>Exam Part A Theory</b>
<b>Second Half</b>			
<b>April</b>	13 <sup>th</sup>	2016	British Bulldog/French Bulldog
<b>April</b>	27 <sup>th</sup>	2016	German Spitz/Japanese Spitz
<b>May</b>	11 <sup>th</sup>	2016	Great Dane/Canaan Dog
<b>May</b>	25 <sup>th</sup>	2016	All Poodles/Xoloitzcunintle/Peruvian Hairless
<b>June</b>	8 <sup>th</sup>	2016	<b>Revision Mini Group</b>
<b>July</b>	7 <sup>th</sup>	2016	<b>Exam Part B Theory</b>



# LOYALTY PET TREATS

Ultra-Premium



## Guilt Free - Low Fat

All Loyalty Pet Treats are made from Australian products all manufactured by us



Why should you feed your pets Loyalty Pet Treats?

- Low in fat
- High in protein
- Nutritionally balanced
- Aromatic
- Highly palatable
- Cats can eat all our treats

**Buy direct: [loyaltypettreats.com.au](http://loyaltypettreats.com.au)**

✉ 9/20 Enterprise St Caloundra Qld 4551  
☎ 07 5499 7211 | [www.facebook.com/LoyaltyPetTreats](https://www.facebook.com/LoyaltyPetTreats)



**We feature only three breeds this month – Herding Breeds. Unfortunately, there are no books on the Polish Lowland Sheepdog in the Library. I have added this breed to the list of books I wish to purchase to complete our coverage on as many breeds as possible.**

There are several books on the Shetland Sheepdog and I would like to mention a few that are regarded as excellent by Sheltie breeders and exhibitors. One simply titled 'The Shetland Sheepdog' by Margaret Osborne is a book that is probably owned and valued by all Sheltie owners. The author was well known as a breeder and exhibitors of Shelties in England many years ago and in this book has touched on all aspects of Sheltie history, breeding and training.

'The New Shetland Sheepdog' by Maxwell Riddle also covers the history of the breed and traces its development in America. A great book full of photos, pedigrees etc. 'Book of the Breed – Shetland Sheepdogs Today' by Maurice Baker is the most recently published book on this delightful breed and covers history of the breed from its early days as crofters dogs on the Shetland Isles. I love this book!

'The Complete Bearded Collie' by Joyce Collis and Pat Jones was published in 1992. Both authors are well known Bearded Collie breeders and the book includes info on the versatility of the Beardie. 'Bearded Basics' by Barbara Riesberg and B. J. McKInney likewise is full of just about everything on these fascinating dogs.

As usual with all books mentioned in this column, they are available to be borrowed from the Library.



## Display Cabinet

I have been asked recently by Clubs about space available at Durack to display Club Trophies. I would like to remind everyone that we have a glass display cabinet in the Library which Clubs are quite welcome to use if they wish to find a permanent place for perpetual trophies etc. Clubs can contact me for further information on: 0407 961 025

## Thank you

Thank you to those who continue to support this Library, I still push to have it relocated to a more 'user friendly' position within the Durack complex and your support for this is appreciated.

**Helen Acworth**  
Librarian



This month's  
member review is:

## 'The Book of the CHOW CHOW'

Written by Dr. Samuel Draper and Joan McDonald Brearley

---

**Reviewed by Helen Acworth**  
Librarian

---

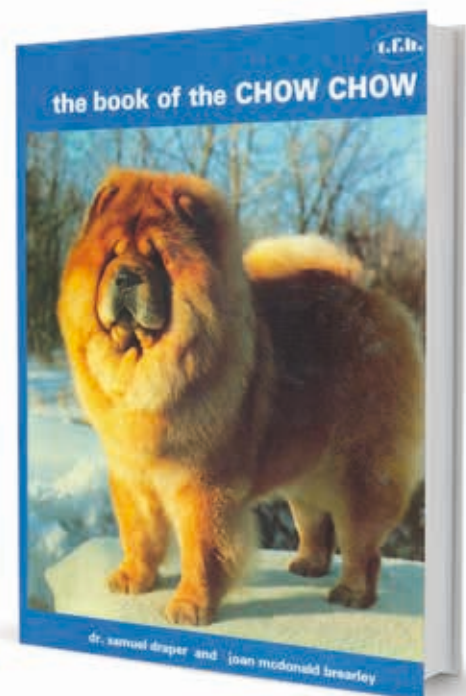
This book is massive – 576 pages, first published in 1977 on quite thick paper and is also quite heavy. Not the sort of book you would take to read in bed but it is the type of book that you would like to read as a person interested in this rather unique breed of dog.

The history of the Chow Chow is fascinating and according to some canine historians originated in China as long as over 3000 years ago. There are other beliefs as to the exact origin and all make interesting reading.

As I have indicated, this is a huge book which leaves nothing out in telling the stories of breed development in both America and Great Britain going back many, many years.

It is a book that probably has limited appeal but for those who seek the history of breeds, would no doubt be overwhelmed by it.

This book is a recent addition to the Library shelves and I acknowledge this donation – very much appreciated.





## *A little bit about the Old English Sheepdog*

*An introduction through a member's eyes*

---

**Dogs Queensland Exclusive** 

Feature Breed supplied by Ann Cassidy

---

**Traditionally used as a farm dog in England, the 'original' Old English Sheepdog looked very different to the one we see today in the show ring. Conformation should be similar but while coats were 'profuse' as the standard still calls for, they were shorter and generally scruffier than we see today.**

A drover's dog was expected to deal with burrs and prickly bushes and did not spend a good proportion of its life on a grooming table as our show dogs do today!

There are many more facets to the Old English Sheepdog than just the ones we see in the show ring. Our beautiful breed is a loyal family member and can perform in many areas of dog discipline.

They have been seen to excel in the Obedience, Herding and Agility fields. They are by no means adverse to getting 'down and dirty' as can be attested to by Ch Tootone Special Brew HT owned by Nicole Jardine competing on a very wet and muddy day in the Herding Trials.





# Feature Breed

The Queensland Dog World



They love to run and play and are very happy when there's lots of other OES involved. For this reason the club holds fun days which are attended by both show and pet dogs and their owners. At most of these events as many as 30 dogs of all ages and with varying amounts of coat may be in attendance with no growling or snapping!



The Club and the breed enjoy a long, historic association with the Dulux brand name. Club members provide dogs for promotion of Dulux products at hardware stores and at trade functions. These promotions assist us to fund our welfare scheme and International Judges at our Championship Shows in July each year.



Even a show dog likes to relax! Sup Ch Ottaba Peeka Bewe AKA Bones taking it easy waiting for her podium appearance for RUBISS at our recent Championship Show.



Puppies are adorable. They are born black and white and only demonstrate their glorious coats on maturity or from 3 years onward. The breed suffered very greatly when it became overly popular. Fortunately today breeders are responsible and promote health tested puppies.

The Club advises prospective owners to only buy from recommended breeders and to do their homework prior to purchase. Old English Sheepdog puppies are not always readily available and it may be necessary to go on a waiting list.

Finally Old English Sheepdogs are most happy when interacting with their beloved owners.





## THE OLD ENGLISH SHEEPDOG

### A SYNOPSIS. THE BREED AND JUDGING OF THE BREED

Written by Patricia S. McLeod, International All Breeds Judge



**E**arly Days. Historians of the breed have varying theories concerning the advent of Old English Sheepdogs to Australia. There is weight in the opinions of those who state that their arrival was in the period of 1860 to 1885. Records show that they were exhibited at the Melbourne Exhibition in 1898.

Numbers fluctuated over the next six decades. After this time the breed rose greatly in popularity. Numbers increased remarkably and by the seventies and eighties large numbers were shown.

Breed Clubs were formed and the Dulux Dog ensured that everyone could recognise the breed. Grooming and presentation changed dramatically as the dogs became very competitive. The once shaggy, untrimmed sheepdog became a highly stylised product of the canine salons.

As the fanciers grew weary of the workload of grooming, numbers decreased in all countries. Coat maintenance in this breed, especially if the owner owns more than one show dog, can become a Herculean task with no visible end.

The dogs were bred to work sheep in England and for taxation purposes their tails were docked. They are credited with having a Peter Pan personality and since they are clowns by nature, they soon became desirable household pets. And this has not changed and applies still today.

In the Show Ring.

When judging Old English Sheepdogs, judges should be aware that standards vary in many countries. In Australia we have a very old version of the standard. Late last century the English Kennel Club installed an updated version. For a short time the ANKC followed the Country of Origin and we used the same new standard as the English people were using. However, there was unrest in some areas of influence in Australia and the ANKC reverted to the 'old' standard.

Much has been written concerning what is perceived as the five Hallmarks of the Breed. Under the headings of Type, Head, Topline, Coat and Movement some notes will be found to apply in following paragraphs.

In the show ring, first impressions should be of a square, balanced, well-built, cobby dog standing firmly on all fours. Dogs with tails may often be thought to be less square than the docked exhibits. Examination should be hands on and the coupling can be measured. Masculinity and Femininity should be well defined. The judge will be faced by a highly glamorised exhibit. It is essential to adopt a hands-on approach to the judging.

Most people accept that a degree of enhancement is necessary to have a long-coated winner, but excessive scissoring and sculpturing is contrary to the rules of the governing body. Illusions can be created and it is the judge's task to look beyond this.



# Feature Breed

The Queensland Dog World

There are many superbly groomed dogs in shows so it is understandable that the exhibitor of the Old English Sheepdog will seek means of making their dog competitive.

I do believe that when it comes to a question of degree of alteration, it is the personal level of tolerance that the judge has for this, under their interpretation of the rules of the governing body. There is no set standard for how much or how little is carried out. The degree of allowable alteration is well debated by breed fanciers.

The head is a notable feature of the breed. It is large square and smooth and well arched over the eyes. The muzzle should be shorter than the skull. Ratios are debated ad infinitum by fanciers who vary in opinions. It is the depth and breadth of muzzle and skull which is important and the circumference of the skull should be twice that of the muzzle. Muzzle should not taper and it should be truncated. There should be a well defined stop.

Eyes are covered by the fall. Judges should not have the dog looking at the sun when judging. Colour can be brown, wall eyed (one of each colour), blue or have a merle fleck. Light eyes are undesirable. Pigmentation of eye rims adds to soft expression. However, this is one area in which the standard varies in many countries. It is not mentioned in the standard in Australia.

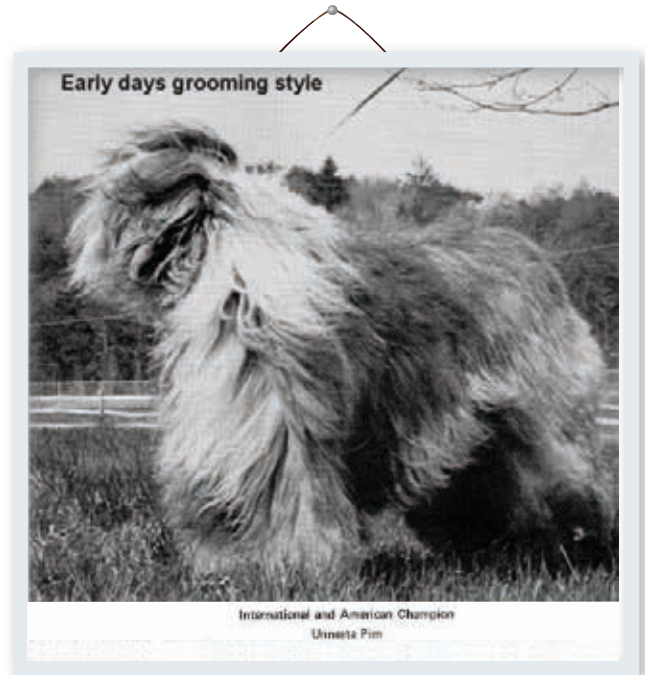
Ears are small and set in line with the outer corner of the eye. Triangular in shape, they are carried flat and covered with long hair.

There should be a full set of teeth set in either a scissor or level bite. In a level bite, the teeth will wear down more rapidly. Pastoral teeth do occur occasionally. In this case level of gums should be checked.

Necks should be muscular and well arched. Shoulders should be well angulated with scapula (shoulder blade) and humerus (upper arm) of equal length thus providing the desired angle. Front is very narrow at the points. Looking down at the dog, he is narrow in front and rounded at the rear. Therefore, when looking down at him, he is pear shaped. Front legs should be straight. Feet are relatively small and round and do not turn in nor out.

The topline is a hallmark of the breed. There is a slight muscular rise in the loin. It should not be confused with roaching nor should it be an elevation caused by lack of angulation in the stifles.

The body proportions must be correct to give the cobby appearance. They are short coupled, strong and muscular. Hips are broad. Upper and lower thighs are roughly of equal length. Hocks are quite low, thus providing endurance. Weight is not mentioned but may exceed 40 Kg thus requiring sturdy hindquarters. Viewed from the rear, the hocks and legs should be straight.



**WOOFER WARES**  
FOR CANINE PROFESSIONALS

*Wholesale suppliers to breeders, show dog owners, groomers, trainers, kennels, vets, dog walkers and daycare...anyone who works with dogs may apply!*

We stock a broad range of:

- shampoos
- grooming equipment
- styling products
- stylist wear (incl. larger sizes)
- clippers & scissors
- specialist books
- muzzles
- crates & cages
- pet treats
- leads & collars
- bows & ribbons
- ...and more

**NO MINIMUM ORDER!**

Call 07 5523 9999 · [www.wooferswares.biz](http://www.wooferswares.biz)  
Visit 14/39-41 Corporation Circuit, Tweed Heads South  
NSW 2486 (5 mins from the QLD border)



*Continued from page 29*

Excessively coated dogs may appear closer behind, thus once again the judge must use their hands to assess the situation.

The movement of the dog is peculiar to the breed. At a walk, the dog will exhibit a roll. It is possible to see the dog amble between the walk and the trot if he is not in a hurry. Not all dogs display this. The trot is the ideal gait for exhibition purposes. Some dogs will pace. Judges may ask the handler to correct this. It is desirable that they are not shown at an over fast gait like a flying trot, for example. The natural gait is free and effortless with reach and drive. The head may be lowered slightly.

Regarding tails, judges may well wonder about the set and carriage as the standard says somewhat ambivalently 'carried naturally'. However judges should acquaint themselves with the standard of the country in which they are judging, as some Controls have been more forthcoming in their descriptions.

As a fancier, I like a low set tail, carried centrally, with a slight curve, a well coated brush, length reaching the top of the hocks, with a white tip, raised slightly when moving, but never raised above the topline.

The dog should have a double coat. The harsh outer coat should be neither straight nor curly but should have a slight break in it. It should be profuse and it is the undercoat which gives the full-coated appearance. Judges should check for any sprays which may artificially add bulk or colour to the coat. The crispness of a correct coat needs no artifice.

Colours are listed in the standard. Australia is the only country still listing blue merle as a colour. Since I had never seen one of that colour I researched the subject and was forced to conclude that it may have existed long ago but had been bred out by rigid selection of colour. Pups are born black and white and texture and colour changes as they grow.

Colour is fully changed to grey usually by age of eighteen months. White markings vary on the dogs. Guidelines concerning splashes of white in the grey coat vary. In U.S.A. these are allowed. In U.K. they are frowned upon. In Australia there is diverse opinion. It is notable that there is no clause in the standard which says splashes are undesirable.

Occasionally, silver grey puppies are born, sometimes with greenish eyes. These are found very rarely in the show ring. Dogs with an excess of white markings, a lack of pigment and pale, buttermilk blue eyes have a perceived link to albinism and deafness in puppies.

Brown in the coat is undesirable. This occurs mainly in puppies and can be caused by an accumulation of dead coat resulting from the shedding that occurs. Grey colours may be paler in junior dogs while the coat is changing colour.

There is no limit in height in the current Australian standard. Balance, type, symmetry and soundness are of most importance. Judges should be looking for type and soundness rather than the winner of the hairdressing contest. Dogs should be 22 inches and upwards and bitches slightly less.

Judges should always be using their fingers and hands. Never let it be said the dog received a massage instead of an examination. And please do not label the well groomed Old English Sheepdog as THE BICHON OF THE WORKING DOG GROUP.

They will always be seen as dogs who can work. Dogs who compete in the Conformation ring have proved that they can also excel in Herding competitions.

*Source credits: Patricia McLeod, Tighgum Old English Sheepdogs, English Cocker Spaniels, Maltese, Lhasa Apsos and one Collie Rough*



**Photo credits:** Supplied by Patricia McLeod



*A fresh approach to veterinary care*

Discounted Litter Vaccination & Microchipping Prices  
Caesarean Sections  
Progesterone Testing with same-day results  
Artificial Insemination  
Pregnancy Ultrasounds including CD of images  
PennHIP & Elbow scoring

♥♥♥  
Special rates for CCCQ members  
Very experienced team  
Conveniently located just off the highway

Clinic owner is the breeder of  
*MBIS BISS Australian Supreme Ch. Pharaoh Hounds*

**Ph: 3482 4508**  
Shop 22, Murrumba Downs Shopping Centre  
*Between the Pet Shop & the Florist*  
Cnr Dohles Rocks Road & Goodrich Road West  
[www.vetmd.com.au](http://www.vetmd.com.au)





**natures  
goodness**

grainfree<sup>+</sup> nutrition

# A NATURAL HOLISTIC NUTRITION FOR DOGS

## Complete and balanced diet

Natures Goodness is high in protein, has no artificial flavours, colours or preservatives, and is made from a real meat recipe that is naturally good for your dog.





## *Dog Agility and Shelties,* **the Perfect Combination?**

**Dogs Queensland Exclusive**

Supplied by Jeanette Durante  
Shetland Sheepdog Club of Queensland

**Breed historians of the Shetland Sheepdog might claim that the breed was developed on the remote Shetland Islands of Scotland, primarily as a multi-purpose farm dog.**

However, the less known truth is that they spent the last hundred or so years refining their skills for their true calling as dog agility superstars...

### **So, what is dog agility?**

Dog agility is a sport in which a handler directs a dog through a numbered course made up of obstacles from jumps, tunnels, seesaws, scrambling frames and raised 'walks', in a race for both time and accuracy.

To achieve a qualifying round the course must be negotiated without fault and under the standard course time (SCT), with places awarded to the fastest, most accurate dogs.

The higher the level that the dog is competing at, the more complicated the course. At the elementary or novice levels, the course layout will be simple, testing primarily the dog's ability to negotiate individual obstacles in a logical sequence.

The more advanced courses will test the handler's ability to change the dog's natural line of direction and to discriminate between closely placed obstacles, with an obstacle often teasingly placed to tempt the dog off-course!



## What forms does it take?

The first agility 'event' was a demonstration at the Crufts Dog Show in 1978. It proved to be enormously popular as a spectator event, and standardised rules and equipment quickly followed.

The sport spread through Europe and to the United States, and was introduced to Australia in 1984.

Because the sport of dog agility is still relatively young, training and handling methods are evolving and as they have improved, course challenges have also increased.

Additionally, the forms the sport has taken are shifting and a competitor today can enjoy agility in its more traditional forms (with all obstacles), jumping events (where the contact equipment such as dog walks, seesaw and scrambling frames are removed to make a much faster course), and even games such as gamblers and snooker, and team events where two or more dog and handler teams work together to complete a course.

## Positive, positive, positive!

Agility has benefited enormously from the expansion of positive dog training. Agility performed successfully requires a happy, eager, playful dog, keen to run as fast as their legs will carry them while still paying close attention to their handler.

This level of enthusiasm and responsiveness cannot be achieved through compulsive or negative methods of training. So toys and food are the tools of the agility trade.

With some of the best competitors in the world happily video-sharing their techniques for building drive, accuracy and enthusiasm in their dogs, we now have access to the experience of world champions at the click of a button, with no excuse for any form of harsh handling in the sport.

The soft and biddable nature of the Sheltie thrives on food and toy based training, making any training session a joy for both dog and handler.



## Can my sheltie do Agility?

While it is true that any breed (or mixed breed) of dog can do agility, the reality is that some are better suited to it than others.

The temperament of a sheltie combined with its natural athleticism makes it an ideal breed for the sport and this is evident in the results achieved by shelties all over the world.

The most important trait for the sport of agility is bidability, meaning a dog's desire to work with you and please you, which shelties have in abundance!

Combined with an appetite for learning, a devout love of food treats and a keen intelligence, the sheltie is – in my entirely unbiased opinion – the most suited small dog breed to the sport (although this might be hotly debated!).

A tendency in the Sheltie breed towards shyness can be a challenge so most agility enthusiasts will choose the most confident pup in the litter.

However, with positive training and dedication, even the shyest of shelties can become agility superstars.

Did I mention how much they love food?

There are many shelties competing in Queensland agility, representing a diversity of breed lines. Even more important, is the diversity of experience in handlers, with some successfully running their first agility dogs, and others having competed for ten plus years.

When it comes to handler age, we have retirees 'discovering' agility for the first time and junior competitors running their first pet dog, all competing alongside people who started agility 30 years ago.

So, if your sheltie is healthy, structurally sound and free of injury and you have a desire to have fun and bond even more closely with your dog, all in a supportive and kind competition, then you should not be limited by age or experience!



## So, how do I get involved?

Two organisations are active in Queensland agility – Dogs Queensland and the Agility Dog Association of Australia (ADAA).

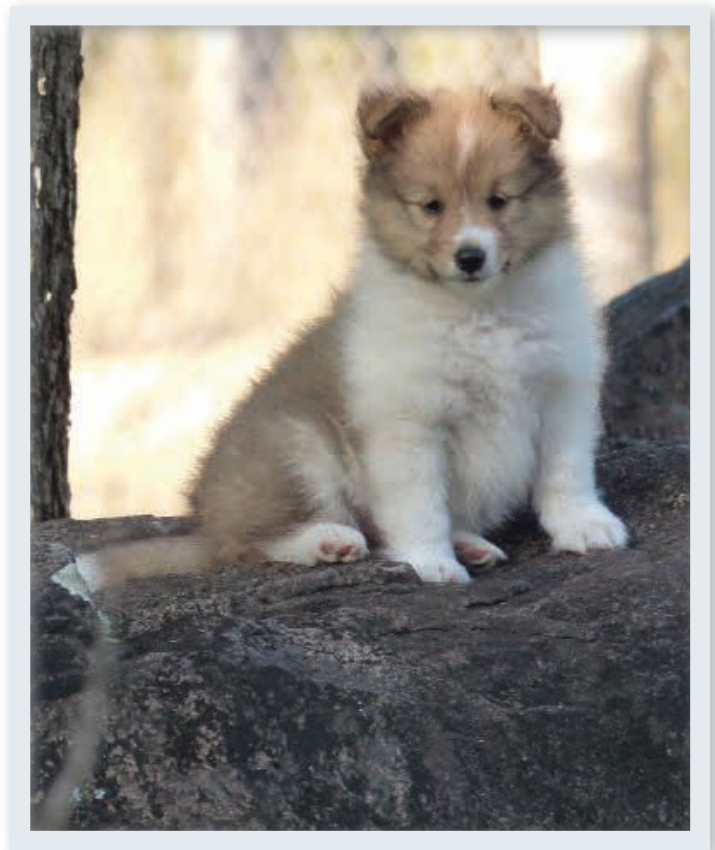
The rules between the two organisations are very similar and many handlers compete in both organisations, switching easily between the two.

In south-east Queensland, and particularly in the Brisbane region, competitions are frequent for all but the very hottest months of the year. Agility Training Clubs are scattered throughout the region, with a large number of Clubs in the Brisbane and broader region. Some of these Clubs are dedicated Agility Clubs, while others also offer Obedience and other dog sports.

If you live in regional Queensland, you might be lucky enough to have a Training Club at your nearest regional centre; otherwise, many people have built their own equipment and taught themselves and their dogs from online courses.

To compete, regional enthusiasts will likely have to travel as most regional Clubs hold only a small handful of competitions per year. But regardless of where you live, a google search, a few phone calls or reaching out on social media to other agility enthusiasts, will help you find a Club that suits your needs and get you started on your Agility adventure.

So, if you have ever found yourself wondering whether the much loved pet sheltie lying at your feet might be capable of more than a daily walk, some cute tricks and an impressive ability to be heard, then stop wondering, grab a handful of treats, head to your nearest Agility Club and find out for yourself the athletic feats they are capable of!



**Photo credits:** Shetland Sheepdog Club of Queensland

Want to learn more about dog training and behaviour?

Seaworld Conference Centre  
Gold Coast Queensland  
Friday 30 October to Sunday 1 November 2015

The Association of Pet Dog Trainers Australia  
Annual Conference  
is for dog professionals and enthusiasts.

To find out more go to [apdt.com.au](http://apdt.com.au)



# Feature Breed

The Queensland Dog World





## The Polish Lowland Sheepdog

The first written history of the breed was about 1514 when a trading ship owned by K. Grabski left Gdansk for Scotland with grain to be exchanged for sheep. He had with him six Lowland Sheepdogs, finally three were traded for a ram and ewe with a Scottish shepherd. The records show that medium size shaggy coated herding dogs existed for centuries in Poland, mostly in Eastern and Northern parts.

At the beginning of the 20th Century, the breed type as we know it today began to emerge. All this work was destroyed in World War 2. Attempts to rescue the breed began in 1948, and in 1957 the first Polish Lowland Sheepdogs were shown, and in 1989 the first one was brought to Australia.

### Average size, weight and lifespan:

**Dogs:** 17 - 20 ins (43 - 52 cms)

**Bitches:** 16 -18.5 ins (40 - 46 cms)

**Lifespan:** An average of 12 years

### Personality, characteristics and temperament:

The Polish Lowland Sheepdog is a medium size shaggy dog, loyal family friend and guard, but suspicious of strangers. They are very intelligent, and need a firm hand from early puppyhood. They are a challenging obedience dog.

### Care requirements:

With such a profuse coat, they do need regular grooming. They must be groomed out completely before bathing or the coat will felt. Most pet owners keep the coat clipped off to about 1-2 inches long, but keeping the head fringe to protect the eyes. Ears must be kept free of hair and dirt, as with their drop ears they can tend to become infected.

They do not cope well with a high protein diet. Please note - they love their food, and don't know when to stop, thus making it possible to easily have them overweight.

### Ideal owners:

They suit all types. In Poland they are kept as guard dogs in apartments. They are a 'people' dog, and do not like to be locked in a backyard on their own. If you don't like a shadow, this breed is not for you.



### In conclusion:

Now you know a little about the Polish Lowland Sheepdog. If you have decided this is the dog for you, or if you would like more information, please contact either the relevant registered breeders Club or Dogs Queensland.

Either will be able to give you information about available puppies and also suggest dog shows where you can see the breed and speak to a breeder.

**MARELLEN**  
SHOW RIBBONS  
Est. 1977

PHONE (02) 4774 1809  
109 Silverdale Rd. Silverdale NSW 2752  
[www.marellenshowribbons.com](http://www.marellenshowribbons.com)  
[marellen@marellenshowribbons.com](mailto:marellen@marellenshowribbons.com)



## The Bearded Collie

**The Bearded Collie has evolved over hundreds of years to perform specialised tasks in the service of humans. For centuries, the Beardie was bred by sheep farmers to work the rugged mountain areas of the Scottish Highlands. Here their lithe but strong build endowed them with the agility, stamina and hardiness to perform their exacting work, while their thick, shaggy coat kept them warm and dry in the harsh winters.**

As the dogs' working ability was all that mattered, there was no concern for accurately recording their history. It is possible that the very early origins of the Bearded Collie may be found in the Polish Lowland Sheepdog, although this connection is not documented.

### Average size, weight and lifespan:

**Dogs:** 53 - 56 cms (21 - 22 ins)

**Bitches:** 51 - 53 cms (20 - 21 ins)

**Lifespan:** Between 11 to 15 years of age

### Personality, characteristics and temperament:

Bearded Collies are happy, lively, energetic and affectionate family dogs. Visit a Beardie at home and you may well find it curled up on a couch or helping out in the kitchen. These dogs love to be where the action is and adapt easily to almost any situation. Most of all, Beardies love company, and are not happy if locked outside and ignored. Typically the breed is extremely affectionate and expects a lot of loving attention. These are very sensitive dogs and do not respond well to harsh treatment.

Some Beardies are easily excited, while others can be extremely placid. Generally speaking, do not expect a Bearded Collie to be much of a guard dog. They may bark at the doorbell but will probably welcome burglars as if they were your best friends. These dogs have a very strong will and soon take advantage of you unless you set rules clearly. Some are very slow to come to maturity and continue with juvenile behaviour well past one year of age. Most Beardie owners find this part of the charm of the breed - but it can be exasperating at times.

### Please take note:

Unless your dog is to be a member of your family, the Bearded Collie is probably not the dog for you.



### Care requirements:

Let's start with the Beardie's most obvious attribute first - its beautiful coat. Most people ask whether this takes a lot of work to keep it looking glamorous. The answer to this question is both yes and no. Compared with a smooth coated dog, a Beardie certainly does need consistent and frequent grooming, however unlike some long coated breeds, a thorough brush and comb through once a week will keep an adult Beardie in pretty good condition. Brushing removes most dirt and dust from the coat.

Some people like to bath their dogs regularly and this does not harm the coat, even on a weekly basis. Make sure that you keep your dog flea free, groom it regularly, keep it happy and in good health and your Beardie will bloom.

### In conclusion:

Now you know a little about the Bearded Collie. If you have decided this is the dog for you, or if you would like more information, please contact either the relevant registered breeders Club or Dogs Queensland.

Either will be able to give you information about available puppies and also suggest dog shows where you can see the breed and speak to a breeder.





# Open Show *Spectacular* 2015



*Saturday, 24th October 2015*

**All registered dogs are eligible to enter this competition which commences on the 1<sup>st</sup> of January, 2015 with the end date being the 30<sup>th</sup> of September, 2015.**

Best and Runner-up	<b>Toy of the Year</b>	Best and Runner-up	<b>Toy Puppy of the Year</b>
Best and Runner-up	<b>Terrier of the Year</b>	Best and Runner-up	<b>Terrier Puppy of the Year</b>
Best and Runner-up	<b>Gundog of the Year</b>	Best and Runner-up	<b>Gundog Puppy of the Year</b>
Best and Runner-up	<b>Hound of the Year</b>	Best and Runner-up	<b>Hound Puppy of the Year</b>
Best and Runner-up	<b>Working of the Year</b>	Best and Runner-up	<b>Working Puppy of the Year</b>
Best and Runner-up	<b>Utility of the Year</b>	Best and Runner-up	<b>Utility Puppy of the Year</b>
Best and Runner-up	<b>Non-Sporting of the Year</b>	Best and Runner-up	<b>Non-Sporting Puppy of the Year</b>

To qualify you need to win Best in Group, Reserve in Group, Minor Puppy in Group or Puppy in Group at all Open Shows which includes Breed Specialities, Group Specialties and All Breeds Open Shows. It will be of great benefit to our Open Show judges (approximately forty-two) in obtaining valuable practical experience whilst selecting their Top Dogs from each Group, so come along and join in for a great day out with your dogs.

**Our Open Show Judges need your support so please keep entering the Open Shows to qualify.**



**For more information please contact Janelle Mannell**  
**Mobile: 0427 736 882 Email: [classicshowsupplies@dodo.com.au](mailto:classicshowsupplies@dodo.com.au)**



## Dog World Update, September 2015

**Now that the EKKA and specialties are over, you would think that Zone 2 would be a little quiet... not quite the case.**

In what is traditionally quite a mild time of year with the weather as we move out of winter, there are a lot of activities happening in the Zone during September.

### What's On in Zone 2 in September?

- Capricorn Coast Kennel Club Championship Shows – 5<sup>th</sup> and 6<sup>th</sup> September
- Gladstone Dog Obedience Club Obedience Trials and Rally-O - 5<sup>th</sup> and 6<sup>th</sup> September
- Maryborough Dog Obedience Club Obedience Agility Jumpers and Games - 5<sup>th</sup> and 6<sup>th</sup> September
- Hervey Bay Kennel Club Championship Shows (3 shows) – 12<sup>th</sup> and 13<sup>th</sup> September
- Rockhampton Dog Obedience Club Track and Search – 12<sup>th</sup> and 13<sup>th</sup> September
- Grounds Committee Zone 2 Amenities Shows (3 shows) – 19<sup>th</sup> and 20<sup>th</sup> September
- Magpies Mackay and District Obedience Club Double Obedience, Agility and Double Jumpers - 19<sup>th</sup> September
- Rockhampton Dog Obedience Club Agility, Jumpers and Obedience – 26<sup>th</sup> and 27<sup>th</sup> September

This is a lovely time of year and all the best and safe travels for our members travelling within and outside of Zone 2 to attend.

### Date Claimer – Qld Dog of the Year / Puppy of the Year finals

The Dog of the Year / Puppy of the Year final is always a major event for all Queenslanders.

Many regional people make the very long and expensive trip to attend this Queensland showcase each year. This year is a little more challenging with the severe camping restrictions imposed on Dogs Queensland.

Let's hope that as many of our members as possible are still able to make it down to the DOTY / POTY to represent us and the wonderful dogs we have.

### Date Claimer – Callide Classic

The Callide Valley Canine Club is again putting on this event for members in the Zone 2 area.

In many ways this is a mini-DOTY / POTY for Zone 2.

The Callide Valley Club works very hard to put this event on for Zone 2 members and it has been enjoyable since its inception in 2013.

Unfortunately, due to a booking issue, the Robert Schwarten covered arena is unavailable for the event, however the Classic is being held at the Miles Street venue used by the Club which are very popular with members and have plenty of camping space.

### Workers needed

Whilst we all enjoy the social side of shows as well as showing, we do need to be mindful that there is a very small group who work at our shows as Show Managers, Stewards or Writers. Unfortunately, this group is a little too small.

Week-in, week-out it is always the same small group who put their hand up, often to the detriment of preparing their own dogs for exhibition, to do the important roles required to make our shows possible. They show their dogs, they have worked all week and then they work all weekend. Without these people, we would be lost.

I would invite all members to consider taking on these roles to help spread the workload. In Zone 2, we are critically short of workers and are currently facing a situation where we are very close to having to delay judging in rings so that a worker can become available. With the number of exhibitors at shows, we could easily cover the jobs required if everyone participated.

This would mean that participation required would be more infrequent and everyone will get to enjoy some shows where they can just relax.

Training is available to assist you to become a worker and part of this training is some excellent information that will assist you in understanding the rules relating to our exhibitions. This training is invaluable – at every session I have ever been to, members learn at least five new things that they were not aware of.

So please, put back into your hobby and relieve some of the pressure on those who work all the time to make it possible. If we burn these people out, there will be no more shows.



## Camping at Durack

For members in regional areas, the issue of camping at Durack and the new rules imposed upon us are a cause for concern and very real barrier for participation at dog shows at the site.

Since the process commenced several years ago, meetings have been conducted with Brisbane City Council and a qualified town planning consultant has been engaged by Dogs Queensland with a view to working through to a solution.

The reason for the permit restrictions relate to our registered land zoning and use for the site and how camping is considered to change the use of the site in a material way thus requiring the applications and permits.

Throughout the process, Dogs Queensland has pleaded its case to try and achieve a workable outcome for members and has been just as frustrated with the restrictions as our members have been.

The process continues with a view to expanding the permit from tent camping only to enable the accommodation of motorhomes and caravans.

This process does come with a cost and requirements that the Board needs to consider and weigh up prior to moving forward with and there is also the constraint of the time required for investigations and approvals by Brisbane City Council.

I would like to thank the Zone 2 members and all members who have provided feedback and input to this process and look forward to continue to work with you and communicate as we progress. The issue is quite a complex one to work through.

## Submissions

Submissions are always welcome for the column. If you have a news item, an idea for a story, photos, or want to report a special or significant achievement, please not hesitate to contact me. Any information can be emailed to me at [craig.pettett1@bigpond.com](mailto:craig.pettett1@bigpond.com)

Until next time.



Nicklin Way  
VETERINARY SURGERY

## Canine Reproduction Service

- Serum Progesterone – 7days/week, 2hr turnaround
- Semen Collection and Analysis
- Pregnancy Ultrasound
- Artificial Insemination (fresh/chilled)
- Elective Caesarians & Humidicrib
- Hip and Elbow Scoring (digital radiography)
- AQIS Accredited for export
- Discounted rates for Puppy Vaccination and Microchipping
- DNA testing for parentage and genetic disease
- Orthopaedic surgery including TTO for cruciate repair
- Upper airway surgery for brachycephalic breeds: stenotic nares, soft palate resection, everted laryngeal saccules
- Acupuncture and Physiotherapy



Nicklin Way Veterinary Surgery

202 Nicklin Way, Warana Qld 4575

Ph 07 5493 2655 • Fax 07 5493 2434 • [www.nicklinwayvet.com.au](http://www.nicklinwayvet.com.au)



## The Shetland Sheepdog Club Of Queensland Inc

**Dogs Queensland Exclusive**

Supplied by Ann Davies (Secretary)



### The Sheltie club in Queensland had very humble beginnings.

A group of Sheltie lovers including Kel and Jean Ball, Mary and Ian Rand and Pat Atkins met at Pat's home and discussed forming a Club. After agreement was reached, they contacted other interested people including Margaret and Ted Alderton and were given C.C.C. approval to operate as a Social Club. Early social events included highly successful puppy fun days held at the home of Mary and Ian Rand.

Granted full membership of the C.C.C., 1974 saw the Club hold its first Open Show at the Douglas Wadley Pavilion on an outside grass ring (Ring 3). This show was won by Ch. Anmoray Gay Shannon owned by P.Y. Carpenter and D. Fredricks.

Since that time, the Club has held many successful shows including 1994 fourth national show (This show was won by Ch. Hillacre Heavenly Blue owned by Hillacre Kennels) and our silver anniversary show (This show was won by Ceston Naughty but Nice owned by G. Baker) as our Club continues to go from strength to strength.

The first Sheltie litter born in Queensland was bred under the Triate prefix (17.10.66) and consisted of a tri bitch and a sable and white bitch. The second litter (06.09.66) produced our first Queensland bred champion – Ch. Cabrico Callisto.

In 1968, five litters were registered under the Valhal prefix. 1969 saw the first Hartsworth litter in Queensland. While Shirley is seldom still seen at ringside, their daughter Karen has taken over the breeding and showing under her own prefix - Rawuch.

From 1971 until recently, Edna Ulrich (Laed) has bred and shown mainly Blue Merle Shelties. Ch. Laed Blue Rose was the first blue merle to obtain her title in Queensland. This bitch also took best of breed at Brisbane Royal at the tender age of nine.

John and Val Wishard bred their first litter under the Abovin prefix in 1972, which included a sable and white bitch Ch. Aboven Allegretta. This bitch was owned by Margaret Alderton. John and Val bred and showed successfully in Queensland for a number of years before moving to Victoria.

1973 saw a number of successful breeds emerge. V. Smith bred her first Queensland litter under the already well known Cardiff prefix. This litter included Ch. Cardiff Charisma, which took out reserve in show at our first Open Show. Pam Carpenter owned and showed this bitch.

Margaret Alderton bred her first litter under the Hjalti prefix. This litter included Ch. Hjalti Ceasar Gallant.



Although breeding very few litters over the years, Margaret and her Hjalti Prefix are still very prominent in the show ring today.

Carolyn Pfeiffer bred her first Queensland litter under the Mallaraba prefix having bred successfully in the south before moving to Queensland. Her first litter in Qld included Ch. Mallaraba Minkara.

Carol is still breeding and showing successfully today.

Mary Rand, well known for her Collie Roughts also bred her first Sheltie litter in 1973 under the Brongia Prefix. This litter included Ch. Brongia Babie a sable and white bitch. This bitch was our President, Robyn Carroll's foundation bitch. Robyn lived, showed and bred Shelties in South Australia for a number of years before returning to Queensland. She bred her first Sheltie litter in Queensland in 1981 under the Gavend prefix. This litter included Ch. Gavend Gadabout, a sable and white dog. Robyn is a very successful breeder today, having outstanding success in the show Ring.

Lynn Haylock, now Wood's prefix Shadtree appeared in 1973. While enjoying many successes under her own prefix, Lynn achieved greater success showing Ch. Nigma Acacia. winning B.I.S. at the S.S.C.Q Championship Shows in 77, 78, 79, 80 and R.I.S. in 81. Her dog Ch. Carlwood Bronze Boy has left his mark on Queensland Shelties.

Lynn lives near Brisbane and is still showing and breeding Japanese Spitz.

In 1974, Pam and Ray Carpenter, well known Judges and very successful at breeding and showing in Sydney, began breeding under their Yona prefix in Queensland. Not only have they bred and continue to breed many outstanding Shelties, but contributed greatly to the breed with their three lovely imports Ch. Ellendale Etienne, Ch. Ellendale Traveller and Ellendale Fisherman. Pam and Ray's daughter Leisa is still very active in the Queensland dog world a breeder, exhibitor and Judge.

A number of people are involved in our Club and the show scene today. Betty Howard has been a successful breeder and exhibitor under the Egeadah prefix. While successfully breeding all colours, Betty is best known for her outstanding blue merles. Because of her efforts in keeping Club records, I have been able to obtain most of the above information.

Dorothy Hall has been a very successful breeder under the Cadvarni prefix. She has served our Club well, having been Secretary and President and is presently taking a well deserved break as Trophy Steward. She still enjoys showing and loves her trips away. She has success with her Shelties and Schipperkes.



Ann French is a well known and respected breeder of Shelties under the Learick prefix. Ann imported Nitelife of Terracota (imp U.K.) and has bred many outstanding Champions. Ann is always ready to help others. Her latest champion is Ch. Learick Lord of the Manor.

Rosemary Kelso shows and breeds under the Rokel prefix. Her dog Ch. Rokel Dakota ROMA is behind many of the dogs winning today and has sired many champions.

In the North, Russell and Anne Burgess (Trueglen) bred and showed their Shelties. They had many successes with their tri-coloured dogs. Ill health has forced their retirement from showing. Other country members making their mark in the show world include Ann Harrison (Anscot), Catherine Murdoch (Donriver), Dell Moran (Kathetta), Patrena Limkin (Shatrin) and Mr and Mrs Shipp (Dardane).

Lill and Harry Hardman (Lilreb) moved to Queensland some years ago and have had many successes in the show ring. Their latest success is a blue merle dog Ch. Almaroy Skyza Blue.

Judy and Barry Mason (Fairpark) bred and showed Shelties in New Zealand before moving to Australia. They have recently imported a dog from New Zealand, Falkirk Kayenne Pepper (imp N.Z.).

Unfortunately, both have now passed away. Kaylene Fisher (Tesskatel) has been showing dogs in Queensland for many years.

The Secretary, Ann Davies breeds and shows with some success under the Xanthorrhoea prefix. Her most outstanding dog was Ch. Xanthorrhoea Mr Chip ROMA who took out dog challenge at the third national Show.

With so many people working for and trying to improve the breed, our Club and breed in Queensland is in good hands.

No history of Shelties in Queensland would be complete without mention of Pat Atkins. Pat lived in Queensland for many years breeding and showing under the Kismet prefix. She was very successful and many early breeders obtained dogs from Pat. She imported into Australia Ch. Silvretta Sandpiper of Loughrigg (imp U.K.), a lovely Blue Merle dog. Pat, a well respected Judge, now lives in Western Australia where she continues to show and exhibit. Kismet is still having an influence in Queensland through a sable dog Kismet Tartan owned and exhibited by Margaret Alderton.

No brief history of Shelties in Queensland could be complete without mentioning our Obedience people. Mary Bickerton has been a successful Obedience Judge, trainer and exhibitor for a number of years.



# Member Insight

The Queensland Dog World



She first trialed in North Queensland but now lives on the North Coast. Her Sheltie Cadvarni Spys Bluemajk was the top winner at our national show in 1994 and the leading Obedience dog in North Queensland for a number of years. Unfortunately, this bitch was killed by a snake while still young but her progeny are still winning in the Obedience ring.

The Meehans are also involved in Obedience and over the years have trained many champions. They now live near Gympie and are having success with a young bitch.

Many local, interstate and overseas dogs have played their part in making our breed in Queensland what it is today. They are too numerous to mention.

Shelties like to please so this makes them ideal for the Conformation ring and for Obedience where they have been successful at the state and national level. They have also been successful in Jumps and Rally-O, at Herding, at Agility, Jumping, Games and Dances with Dogs. More importantly, they excel as family pets as they are loyal and loving to their owners.



Photo credits: Supplied by Ann Davies

*Because you care... we'll be there!*

CREMATIONS | FUNERALS | MEMORIALS

**PETS R.I.P.**  
Beric & Sue Lees  
Toowoomba & Ipswich  
1300 233 007 or 1800 PETS RIP  
www.petsrip.com.au | info@petsrip.com.au

Enquire For Special CCA Members Deals

2013 \* 2014 \* 2015 \*  
BEST PET SERVICE \* BEST PET SERVICE \* BEST PET SERVICE

- Individual Pet and Equine Cremations
- Strict Individual Identification Process

**Gold Print Promise**  
Included with every service is your beloved pet's Presentation Pack. In this pack you will find a gold paw print, a lock of your pet's hair and a personalised, signed Certificate of Pet Cremation - all of which are our Gold Print Promise to you that it is your beloved pet being safely returned.



## *Dogs that pull carts -* **Drafting**

**Dogs Queensland Exclusive** 

Supplied by Beatriz Insausti

**Looking back into history, we can find dog working with man helping him do jobs in his daily life. There are many ancient breeds that have a carting background but most of these breeds were multitasking. The Rottweiler was the butchers dog, a herding drover's dog that protected his stock at nights. He would pull a loaded cart to market and had the butcher's purse around his neck for safe keeping.**

The Bernese Mountain Dog was a dairy cattle dog, pushing cattle up to the Alpine pastures during the day and then pulling the cart loaded with milk to the dairy.

Traditional Bernese hauled dairy products from farm to dairy or market often accompanied by children. But not all were farmer's dogs. The Newfoundland was a fisherman's dog but it was cheaper to keep a carting dog than a horse in Newfoundland.

So the Newfoundland dog began being hitched to his cart at the wharf and he would take the day's catch to market. He was also known to deliver milk and mail to add just a few bows to his tail. In World War I, dogs were used to pull small field guns or cannons. Russian Black Terriers have their history as a military guard dog but still it pulled a cart. This sense of nostalgia has kept the interest in carting alive today. Dogs that pulled a cart have to be physically strong and sound, well trained, adaptable and of good disposition.

They must work well with their handler in the variety of terrains and situations that they might encounter. Carting is a way to involve ourselves in the heritage of our breeds. Today carting is used in club parades, fun events and in other parts of the world in competitions. It is to this end that a national committee has been formed and are working towards a program to bring this canine sport to our shores!

The next article will include information on the way the competition will be structured.



**Photo credits:** Supplied by Beatriz Insausti





## AGILITY, OBEDIENCE, RALLY & ALL DOG TRAINING BE READY FOR SUMMER TRAINING



Have you ever run out of pockets when training or out and about with your dog.

You need our new short training apron on Special, and available in four colours.

See our website for all kinds of Fleece, Bungee, Leather, Jute and French Linen Tugs for the most Fussy or Tuffest Tug-gers.

Dumbbells  
Scent Articles  
Training Vests

Clickers/Sticks  
Balls, and much, much  
More.

**Go to our website:- [www.obedienceproducts.com](http://www.obedienceproducts.com)**

Email [morrison.animalcare@hotmail.com](mailto:morrison.animalcare@hotmail.com) Phone 0755339727

PRO SHOP

ROYAL CANIN

# Great things come in small packages



Mini Starter 8.5kg

Mini Junior 15kg

Mini Adult 15kg

Mini Sensible 10kg

Exclusive products for small breed dogs

# 20% Discount

on Mini range at the ProShop August 2015

\*Discounts only available at the ProShop during the August 2015. Minimum order on the ProShop is 20kgs. All orders delivered freight free.





## August amendments and notes

### Cavalier King Charles Spaniel Club

Open Show 19<sup>th</sup> September 2015. Judging for this show will now commence at 2:00pm

### Waterloo Bay Kennel Club

Open Show 11 October 15 Mr A. Addicott is replacing Mrs J. Tilbrook, Championship and Open Shows 10<sup>th</sup> and 11<sup>th</sup> October 2015 Contact number is 0409 720 882

### Marybough Kennel Club

Championship Shows 31<sup>st</sup> October and 1<sup>st</sup> November 2015 Mr E. Pickering (NSW) is replacing Mr J. Forbes (NSW)

## Show schedule requirements:

All Clubs advertising are affiliated with the Canine Control Council (Qld) Ltd and their Shows are conducted under the Rules of the Canine Control Council (Qld) Ltd. A copy of such Rules may be perused with Club Secretaries.

Challenge certificates at Championship Shows are awarded at the discretion of the Judges and all Queensland exhibitors at Championship Shows must be financial members of the Canine Control Council (Qld) Ltd. Exhibitors may only enter the assembly or judging areas as prescribed in the Rules and must be suitably dressed including footwear.

### Prizes and awards:

Either prizes or awards must be listed in full as they will appear in Club Catalogues.



Show day: Tuesday, 3rd November 2015

# MAREE KENNEL CLUB

Show venue: Show venue: Dogs Queensland Sports Grounds, 247 King Avenue DURACK, QLD 4077

Entries close: Friday, 9th October 2015



## HOSTING MELBOURNE CUP DAY SHOW

## CHAMPIONSHIP SHOW

**Classes:** 1(1a) 2(2a) 3(3a) 4(4a) 5(5a)  
10(10a) 11(11a) 18(18a)



**Entries to:** Show Secretary Mrs H. Acworth, P.O. Box 7339, REDLAND BAY QLD 4165,  
**online entries through Show Manager**

**Enquiries:** **Contact:** Mrs H. Acworth **Ph:** (07) 3829 1191  
**Show day contact:** 0407 961 025

### JUDGING ORDER:

<b>Ring 10:</b>	<b>Ms L. Horne</b>	Group 1
<b>Ring 6:</b>	<b>Mrs K. Nichols</b>	Group 2
<b>Ring 7:</b>	<b>Mrs H. Weil</b>	Group 3
<b>Ring 3:</b>	<b>Mrs G. Stephenson</b>	Group 4
<b>Ring 8:</b>	<b>Mrs R. Lane</b>	Group 5
<b>Ring 4:</b>	<b>Mr AD Weil</b>	Group 6
<b>Ring 5:</b>	<b>Ms M. Davis</b>	Group 7
<b>General Specials:</b>	<b>Ms M. Davis</b>	

**Entry fees:** \$10, Baby Puppy \$8, catalogue \$2.50

LUNCH - SALAD DESSERT AND GLASS OF WINE \$15 TO BE PREPAID WITH ENTRIES  
PROUDLY SPONSORED BY:



**Best Dressed Lady, Best Dressed Gent, Best Cup Day Hat, Best Dressed Handler and Dog**

🕒 **Judging time: 9:00am**



# Show Schedules

The Queensland Dog World



Show day: Saturday, 7th November 2015

## BUNDABERG CANINE CLUB INC

Show venue: Undercover Arena, Bundaberg Recreational Precinct, University Drive BUNDABERG

Entries close: Friday, 16th October 2015

### CHAMPIONSHIP SHOW



<b>Classes:</b>	1(1a) 2(2a) 3(3a) 4(4a) 5(5a) 9(9a) 10(10a) 11(11a) 18(18a)
<b>Handlers Classes:</b>	7 to Under 10, 10 to Under 13, 13 to Under 18 (Lunch time Judge Miss T. Waters in Ring 1)
<b>Entries to:</b>	Bundaberg Canine Club Inc C/- P.O. Box 1435, MUDGEERABA QLD 4213, <b>online entries through Show Manager</b>
<b>Enquiries:</b>	<b>Contact:</b> Marg Norton <b>Ph:</b> (07) 4157 8338 <b>Show day contact:</b> Ph: 0437 578 338

#### JUDGING ORDER:

<b>Ring 1:</b>	<b>Mr C. Moore (VIC)</b> Baby Puppy Sweepstakes, Groups 1, 4 and 5
<b>Ring 2:</b>	<b>Mrs K. Eldred (NSW)</b> Puppy Sweepstakes, Groups 2, 3, 6 and 7
<b>General Specials:</b>	<b>Mr C. Moore (VIC)</b>
<b>Sweepstakes:</b>	Baby Puppy and Puppy
<b>Entry fees:</b>	\$10, catalogues \$3, Sweepstakes and Baby Puppy Class \$6, camping \$20 powered per night \$14 unpowered per night

⬆ Judging time: 9:00am with Sweepstakes

Show day: Sunday, 8th November 2015

Entries close: Friday, 16th October 2015

### CHAMPIONSHIP SHOW



<b>Classes:</b>	1(1a) 2(2a) 3(3a) 4(4a) 5(5a) 9(9a) 10(10a) 11(11a) 18(18a)
<b>Entries to:</b>	Bundaberg Canine Club Inc C/- P.O. Box 1435, MUDGEERABA QLD 4213, <b>online entries through Show Manager</b>
<b>Enquiries:</b>	<b>Contact:</b> Marg Norton <b>Ph:</b> (07) 4157 8338 <b>Show day contact:</b> Ph: 0437 578 338

#### JUDGING ORDER:

<b>Ring 1:</b>	<b>Mrs K. Eldred (NSW)</b> Baby Puppy Sweepstakes, Groups 1, 4 and 5
<b>Ring 2:</b>	<b>Mr C. Moore (VIC)</b> Puppy Sweepstakes, Groups 2, 3, 6 and 7
<b>General Specials:</b>	<b>Mrs K. Eldred (NSW)</b>
<b>Sweepstakes:</b>	Baby Puppy and Puppy
<b>Entry fees:</b>	\$10, catalogues \$3, Sweepstakes and Baby Puppy Class \$6, camping \$20 powered per night \$14 unpowered per night

**FUN FOR ALL!**



Ringside Canteen both days until late Saturday night. Buy your dinner and sit back and enjoy watching Lure Racing run by the Qld Staffy Club. Also join in the 'Irish Brace' on Saturday night **FUN FOR ALL!** The Club reserves the right to add another Judge or alter groups if numbers dictate.

⬆ Judging time: 9:00am with Sweepstakes

## TREK LEISURE TRAILERS

FOR FREE COLOUR BROCHURE [www.trek.com.au](http://www.trek.com.au)



**DOG FLOATS**  
Easy to Handle,  
Light to Tow  
2 / 4 / 6 / 8  
berth.  
Size cages  
to suit :  
Medium  
to Large

#### STANDARD FEATURES:

- Lift-up Lid • Best designed nose cone • Plenty of Space (Tack Box)
- Front Window • Vents on all doors front & rear • 2 heat extractors on lid
- Galvanised Steel construction • Powdercoated for temperature control
- Hygienic plug-in floor (easy maintenance)

#### EXTRAS AVAILABLE:

- Water Tank fitted with pump and filler
- Trolley Carriers fitted at rear for easy access
- Canvas Awnings, quick to set-up – different sizes available
- 12 volt light – rear table and wash basin

#### ★ NEW RELEASE CAMPER KIT: ★

#### ALL DOGS LOVE THE TREK FLOAT!

For further enquiries, please contact  
TREK TRAILERS • 25 Kenway Drive, Underwood Qld. 4119  
P.O. Box 41, Underwood Qld. 4119 • Email [trek@bigpond.net.au](mailto:trek@bigpond.net.au)  
Ph: (07) 3849 1219 • Toll-Free: 1800-011 079 • Mob: 0418 195 047





# Show Schedules

The Queensland Dog World



Show day: Saturday, 14th November 2015

## SUNSHINE COAST KENNEL CLUB

Show venue: Beerwah Sportsground, Roberts Rd, BEERWAH QLD

🏆 2 CHAMPIONSHIP SHOWS 🏆

### CHAMPIONSHIP SHOW

Entries close: Monday, 19th October 2015

**Classes:** 1(1a) 2(2a) 3(3a) 4(4a) 5(5a) 10(10a) 11(11a) 18(18a)

**Handlers Classes:** 7 to Under 10 (Mrs J. Cantlon), 10 to Under 13 (Ms K. Jacobson), 13 to Under 18 (Mrs C. Horne), Judged at tea break

**Entries to:** SCKC, C/- J. Lanham, P.O. BOX 356, Ormeau Qld 4208, **online entries through Show Manager**

**Enquiries:** **General contact:** As above **Ph:** 0409 720 882 **Show day contact:** Ph: 0488 947 444



#### JUDGING ORDER:

<b>Ring 1:</b> Mrs T. Dennis (NSW)	Group 1	<b>Ring 3:</b> Mr A. Fry (VIC)	Baby Puppy Sweepstakes, Groups 3 and 7
<b>Ring 2:</b> Mr J. Palmer (NSW)	Groups 2 and 6	<b>Ring 4:</b> Mrs B. Marker	Puppy Sweepstakes, Groups 4 and 5

**General Specials:** Mrs B. Marker

**Sweepstakes:** Baby Puppy and Puppy

**Entry fees:** \$13, Baby Puppy \$9, Sweepstakes \$9, catalogues \$3

Camping available on the grounds with payment to the Caretaker.

🕒 Judging time: 4:00pm with Sweepstakes

Show day: Sunday, 15th November 2015

### OPEN SHOW

### ★ OPEN SHOW SPECTACULAR QUALIFIER ★

Entries close: Monday, 19th October 2015

**Classes:** 1(1a) 2(2a) 3(3a) 4(4a) 5(5a) 10(10a) 11(11a) 18(18a)

**Entries to:** SCKC, C/- J. Lanham, P.O. BOX 356, Ormeau Qld 4208, **online entries through Show Manager**

**Enquiries:** **General contact:** As above **Ph:** 0409 720 882 **Show day contact:** Ph: 0488 947 444

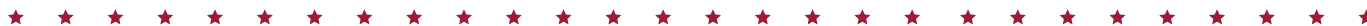


#### JUDGING ORDER:

<b>Ring 1:</b> Mrs M. Hobson	Group 1	<b>Ring 5:</b> Mrs U. Greenwood	Group 5
<b>Ring 2:</b> Mrs R. Seare	Group 2	<b>Ring 6:</b> Miss S. Wheatley	Group 6
<b>Ring 3:</b> Ms T. Hill	Group 3	<b>Ring 7:</b> Ms C. Gunn	Group 7
<b>Ring 4:</b> Mrs N. Attridge	Group 4	<b>General Specials:</b> Ms C. Gunn	

**Entry fees:** Automatic entry into Open Show if entered in the Championship Show. Entry for Open Show only \$5 with an entry form required

🕒 Judging time: 8:30am



### CHAMPIONSHIP SHOW

Entries close: Monday, 19th October 2015

**Classes:** 1(1a) 2(2a) 3(3a) 4(4a) 5(5a) 10(10a) 11(11a) 18(18a)

**Handlers Classes:** 7 to Under 10 (Ms S. Wheatley), 10 to Under 13 (Mrs M. Hobson), 13 to Under 18 (Ms K. Jacobson) Judged at lunch break

**Entries to:** SCKC, C/- J. Lanham, P.O. BOX 356, Ormeau Qld 4208, **online entries through Show Manager**

**Enquiries:** **General contact:** As above **Ph:** 0409 720 882 **Show day contact:** Ph: 0488 947 444



#### JUDGING ORDER:

<b>Ring 1:</b> Mr J. Palmer (NSW)	Groups 1 and 4	<b>Ring 3:</b> Mrs T. Dennis (NSW)	Groups 3 and 7
<b>Ring 2:</b> Mrs B. Marker	Groups 2 and 6	<b>Ring 4:</b> Mr A. Fry (VIC)	Group 5

**General Specials:** Mr A. Fry (VIC)

**Entry fees:** \$13, Baby Puppy \$9, automatic entry into Open Show if entered in the Championship Show, catalogues \$3 (covers both Sunday shows)

PROUDLY SPONSORED BY:



🕒 Judging time: 9:00am



# Show Schedules

The Queensland Dog World



**Show day: Thursday, 19th November 2015**



## CABOOLTURE KENNEL CLUB



Show venue: Caboolture Showgrounds, Beerburum Rd, CABOOLTURE QLD

**2 CHAMPIONSHIP SHOWS**

### CHAMPIONSHIP SHOW

Entries close: Thursday, 29th October 2015

**Classes:** 1(1a) 2(2a) 3(3a) 4(4a) 5(5a) 10(10a) 11(11a) 18(18a)

**Entries to:** Caboolture Kennel Club, Ruth Cook, P.O. Box 344, NERANG 4211, **online entries through Show Manager**



**Contact:** Nadia Attridge

**Enquiries:** Ph: (07) 5428 3420

**Show day contact:** 0407 591 165

#### JUDGING ORDER:

<b>Ring 1:</b> Mr S. Swee Lim (MALAYSIA)	Group 1	<b>Ring 5:</b> Mrs S. Hannigan (NSW)	Group 5
<b>Ring 2:</b> Mrs K. Hardwick (NZ)	Group 2	<b>Ring 6:</b> Mrs D. Brown (NZ)	Group 6
<b>Ring 3:</b> Mr J. Bryson (NSW)	Group 3	<b>Ring 7:</b> Mr D. Seow (MALAYSIA)	Group 7
<b>Ring 4:</b> Mrs N. Robertson (RSA)	Group 4	<b>General Specials:</b> Mrs D. Brown (NZ)	

**Entry fees:** \$13, Baby Puppy \$9, catalogues \$3

Judging time: 4:00pm

**Show day: Friday, 20th November 2015**

### CHAMPIONSHIP SHOW

Entries close: Friday, 30th October 2015

**Classes:** 1(1a) 2(2a) 3(3a) 4(4a) 5(5a) 10(10a) 11(11a) 18(18a)

**Entries to:** Caboolture Kennel Club, Ruth Cook, P.O. Box 344, NERANG 4211, **online entries through Show Manager**



**Contact:** Nadia Attridge

**Enquiries:** Ph: (07) 5428 3420

**Show day contact:** 0407 591 165

#### JUDGING ORDER:

<b>Ring 1:</b> Mrs D. Brown (NZ)	Group 1	<b>Ring 5:</b> Mrs N. Robertson (RSA)	Group 5
<b>Ring 2:</b> Mrs S. Hannigan (NSW)	Group 2	<b>Ring 6:</b> Mrs K. Hardwick (NZ)	Group 6
<b>Ring 3:</b> Mr S. Swee Lim (MALAYSIA)	Group 3	<b>Ring 7:</b> Mr J. Bryson (NSW)	Group 7
<b>Ring 4:</b> Mr D. Seow (MALAYSIA)	Group 4	<b>General Specials:</b> Mr D. Seow (MALAYSIA)	

**Entry fees:** \$13, Baby Puppy \$9, catalogues \$3

Judging time: 4:00pm

**Show day: Saturday, 21st November 2015**

### OPEN SHOW

### ★ OPEN SHOW SPECTACULAR QUALIFIER ★

Entries close: Friday, 30th October 2015

**Classes:** 1(1a) 3(3a) 4(4a) 5(5a) 11(11a) 18(18a)

**Entries to:** Caboolture Kennel Club, Ruth Cook, P.O. Box 344, NERANG 4211, **online entries through Show Manager**



**Contact:** Nadia Attridge

**Enquiries:** Ph: (07) 5428 3420

**Show day contact:** 0407 591 165

#### JUDGING ORDER:

<b>Ring 1:</b> Mrs L. Nielson	Group 1	<b>Ring 5:</b> Mrs J. Tilbrook	Group 5
<b>Ring 2:</b> Mr C. Reid	Group 2	<b>Ring 6:</b> Miss R. Green	Group 6
<b>Ring 3:</b> Mrs G. McNeill	Group 3	<b>Ring 7:</b> Mr M. Yates	Group 7
<b>Ring 4:</b> Mr G. Wilshier	Group 4	<b>General Specials:</b> Miss R. Green	

**Entry fees:** \$5

Judging time: 11:00am





**Show day: Saturday, 21st November 2015**



## CABOOLTURE KENNEL CLUB



Show venue: Caboolture Showgrounds, Beerburrum Rd, CABOOLTURE QLD

**2 CHAMPIONSHIP SHOWS**

### CHAMPIONSHIP SHOW

**Entries close: Friday, 30th October 2015**

<b>Classes:</b>	1(1a) 2(2a) 3(3a) 4(4a) 5(5a) 10(10a) 11(11a) 18(18a)	
<b>Handler Classes:</b>	7 to Under 10, 10 to Under 13, 13 to Under 18 (Judge appointed on day)	
<b>Entries to:</b>	Caboolture Kennel Club, Ruth Cook, P.O. Box 344, NERANG 4211, <b>online entries through Show Manager</b>	
<b>Enquiries:</b>	<b>Contact:</b> Nadia Attridge <b>Ph:</b> (07) 5428 3420 <b>Show day contact:</b> 0407 591 165	

#### JUDGING ORDER:

<b>Ring 1:</b>	<b>Mrs K. Hardwick (NZ)</b>	Group 1	<b>Ring 5:</b>	<b>Mr J. Bryson (NSW)</b>	Group 5
<b>Ring 2:</b>	<b>Mr A. Ferruggiaro (USA)</b>	Group 2	<b>Ring 6:</b>	<b>Mrs N. Robertson (RSA)</b>	Group 6
<b>Ring 3:</b>	<b>Mr D. Seow (MALAYSIA)</b>	Group 3	<b>Ring 7:</b>	<b>Mr S. Swee Lin (MALAYSIA)</b>	Group 7
<b>Ring 4:</b>	<b>Mrs D. Brown (NSW)</b>	Group 4	<b>General Specials:</b>	<b>Mr S. Swee Lin (MALAYSIA)</b>	
<b>Entry fees:</b>	\$13, Baby Puppy \$9, catalogues \$3				

**Judging time: Judging commences 2:00pm with Handlers - Breed Judging not before 3:00pm**

**Show day: Sunday, 22nd November 2015**

### CHAMPIONSHIP SHOW

**Entries close: Friday, 30th October 2015**

<b>Classes:</b>	1(1a) 2(2a) 3(3a) 4(4a) 5(5a) 10(10a) 11(11a) 18(18a)	
<b>Entries to:</b>	Caboolture Kennel Club, Ruth Cook, P.O. Box 344, NERANG 4211, <b>online entries through Show Manager</b>	
<b>Enquiries:</b>	<b>Contact:</b> Nadia Attridge <b>Ph:</b> (07) 5428 3420 <b>Show day contact:</b> 0407 591 165	

#### JUDGING ORDER:

<b>Ring 1:</b>	<b>Mr A. Ferruggiaro (USA)</b>	Group 1	<b>Ring 5:</b>	<b>Mr D. Seow (MALAYSIA)</b>	Group 5
<b>Ring 2:</b>	<b>Mrs N. Robertson (RSA)</b>	Group 2	<b>Ring 6:</b>	<b>Mr S. Swee Lin (MALAYSIA)</b>	Group 6
<b>Ring 3:</b>	<b>Mrs K. Hardwick (NZ)</b>	Group 3	<b>Ring 7:</b>	<b>Mrs D. Brown (NZ)</b>	Group 7
<b>Ring 4:</b>	<b>Mr J. Bryson (NSW)</b>	Group 4	<b>General Specials:</b>	<b>Mrs K. Hardwick (NZ)</b>	
<b>Entry fees:</b>	\$13, Baby Puppy \$9, catalogues \$3				

**Judging time: 7:00am**



**Show day: Friday, 27th November 2015**

## BASENJI BREED NETWORK QLD

Show venue: Dogs Queensland Sports Grounds,  
247 King Avenue DURACK, QLD 4077

**Entries close: Friday, 30th October 2015**

**OPEN SHOW**

★ **OPEN SHOW SPECTACULAR QUALIFIER** ★

**Classes:** 1(1a) 2(2a) 3(3a) 4(4a) 5(5a) 9(9a)  
10(10a) 11(11a) 12(12a) 18(18a)



**Entries to:** BBNQ - P.O. Box 1060, SPRINGHILL QLD 4004,  
**online entries through Show Manager**



**Enquiries:** **Contact:** Tammy Ph: 0405 265 751  
**Show day contact:** Ph: 0405 265 751 / 0402 580 898

### JUDGING ORDER:

**Ring 4:** Mr N. McGreevy Basenji males and females

**General Specials:** Mr N. McGreevy

**Entry fees:** \$3, catalogues \$8 (covers both Shows)

⚡ **Judging time: Commences half an hour after start of the Directors Show starting at 6:00pm. Not before Completion of Basenji's.**

**Show day: Saturday, 28th November 2015**

**Entries close: Friday, 30th October 2015**

## CHAMPIONSHIP SHOW

**Classes:** 1(1a) 2(2a) 3(3a) 4(4a) 5(5a) 9(9a)  
10(10a) 11(11a) 12(12a) 18(18a)



**Handlers Classes:** 7 to Under 10, 10 to Under 13,  
13 to Under 18 (Judge to be announced)

**Entries to:** BBNQ - P.O. Box 1060, SPRINGHILL QLD 4004,  
**online entries through Show Manager**



**Enquiries:** **Contact:** Tammy Ph: 0405 265 751  
**Show day contact:** Ph: 0405 265 751 / 0402 580 898

### JUDGING ORDER:

**Ring 4:** Mr A. Hunt (NSW) Dog and Bitch Classes  
Ms C. Burton All Property Classes and Brace Sweepstakes

**General Specials:** Mr A. Hunt (NSW)

**Sweepstakes:** Brace Sweepstakes

**Property Classes:** Best Headed Dog, Best Headed Bitch, Best Gait, Best Tail and Tail Set, Best Feet, Best Interstate Bred plus Coated and Colour including Red and White, Black and White, Tri Colour and Brindle and Parent and Progeny \*Must have a minimum of two Progeny

**Entry fees:** \$15 per entry, \$6 properties, \$8 catalogues (covers both shows)

Specialties are to be held in conjunction with the Amenities Committee of Dogs Queensland shows and the Dog of the Year Support Committee Shows being held over three days.

⚡ **Judging time: 8:30am with Baby Dog Class, Properties to be Judged at end of conformation**







**Show day: Saturday, 28th November 2015**

## DOG OF THE YEAR COMMITTEE

Show venue: Dogs Queensland Sports Grounds, 247 King Avenue DURACK, QLD 4077

**CHAMPIONSHIP SHOW**

**Entries close: Friday, 6th November 2015**



**Classes:** 1(1a) 2(2a) 3(3a) 4(4a) 5(5a) 10(10a) 11(11a) 18(18a)

**Entries to:** Dog of the Year Committee,  
Mr A. Ness, P.O. Box 315, INALA QLD 4077,  
**online entries through Show Manager**



**Enquiries:** **Contact:** Andrew Ness (text only) **Ph:** 0428 193 824  
**Show day contact:** (text only) 0428 193 824

### JUDGING ORDER:

<b>Ring 10:</b>	<b>Ms S. Lancaster (NSW)</b>	Group 1
<b>Ring 7:</b>	<b>Mr J. Stanton (NZ)</b>	Group 2
<b>Ring 11:</b>	<b>Mr P. Martin (SA)</b>	Group 3
<b>Ring 3:</b>	<b>Mr P. Wilkes (WA)</b>	Group 4
<b>Ring 14:</b>	<b>Mr P. Bailey (UK)</b>	Boxers, Group 5
<b>Ring 15:</b>	<b>Mrs W. Baker (SA)</b>	Group 6, (less Boxers)
<b>Ring 5:</b>	<b>Mrs Y. Smith (NZ)</b>	Group 7
<b>General Specials:</b>	<b>Mr P. Wilkes (WA)</b>	
<b>Entry fee:</b>	\$12 entry fee, catalogue \$3	

PROUDLY SPONSORED BY:



↗ Judging time: 4:30pm



## Show day: Friday, 27th November 2015

### GROUPS COMMITTEE 'Directors Show'

Show venue: Dogs Queensland Sports Grounds, 247 King Avenue DURACK, QLD 4077

2 CHAMPIONSHIP SHOWS

#### CHAMPIONSHIP SHOW

Entries close: Friday, 6th November 2015

**Classes:** 1(1a) 2(2a) 3(3a) 4(4a) 5(5a) 10(10a) 11(11a) 18(18a)

**Entries to:** Mrs J. Lanham, P.O. Box 356, ORMEAU 4208, **online entries through Show Manager**

**Enquiries:** **Contact:** As above **Ph:** 0409 720 882  
**Show Day Contact:** Ph: 0407 961 025



#### JUDGING ORDER:

<b>Ring 10:</b> Mr P. Wilkes (WA)	Group 1, Group 1 Specials	<b>Ring 14:</b> Mrs W. Baker (SA)	Group 5, Group 5 Specials
<b>Ring 7:</b> Ms S. Lancaster (NSW)	Group 2, Group 2 Specials	<b>Ring 16:</b> Mrs Y. Smith (NZ)	Group 6, Group 6 Specials
<b>Ring 11:</b> Mr J. Stanton (NZ)	Group 3, Group 3 Specials	<b>Ring 5:</b> Mr P. Bailey (UK)	Dalmatians
<b>Ring 3:</b> Mr P. Martin (SA)	Group 4, Group 4 Specials	<b>followed by</b> Mrs W. Baker (SA)	Group 7 balance, Group 7 Specials
<b>General Specials:</b> Ms S. Lancaster (NSW)			
<b>Entry fees:</b> \$12 per entry, catalogue \$3			

Dalmatians to be Judged in Ring 5 at 6:00pm

Judging time: 6:00pm with All Groups, Group 7 to be Judged in Ring 5 at the conclusion of Dalmatian Judging

## Show day: Sunday, 29th November 2015

### GROUPS COMMITTEE 'Amenities Show'

#### CHAMPIONSHIP SHOW

Entries close: Friday, 6th November 2015

**Classes:** 1(1a) 2(2a) 3(3a) 4(4a) 5(5a) 10(10a) 11(11a) 18(18a)

**Handlers Classes:** 7 to Under 10, 10 to Under 13, 13 to Under 18 (Judged at lunch break, Judge appointed on day)

**Entries to:** Mrs J. Lanham, P.O. Box 356, ORMEAU 4208, **online entries through Show Manager**

**Enquiries:** **Contact:** As above **Ph:** 0409 720 882  
**Show Day Contact:** Ph: 0407 961 025



#### JUDGING ORDER:

<b>Ring 10:</b> Mrs W. Baker (SA)	Group 1, Group 1 Specials	<b>Ring 14:</b> Mr I. Smith (NZ)	Group 5, Group 5 Specials
<b>Ring 7:</b> Mr P. Wilkes (WA)	Group 2, Group 2 Specials	<b>Ring 15:</b> Mr P. Martin (SA)	Group 6, (Less Akita Inu, Rottweiler, Samoyed) and Group Specials
<b>Ring 11:</b> Mrs Y. Smith (NZ)	Group 3, Group 3 Specials	<b>Ring 16:</b> Mr P. Bailey (UK)	Akita Inu, Rottweiler, Samoyed
<b>Ring 3:</b> Ms S. Lancaster (NSW)	Group 4, Group 4 Specials	<b>Ring 5:</b> Mr P. Martin (SA)	Group 7, Group 7 Specials
<b>General Specials:</b> Mr P. Martin (SA)			
<b>Entry fees:</b> \$12 per entry, catalogue \$3			

PROUDLY SPONSORED BY:



Judging time: 9:00am with All Groups, Group 7 to be Judged in Ring 5 at the conclusion of Judging Group 6



PRO SHOP

ROYAL CANIN

# 20% Discount on Medium, Maxi & Giant Adult

at the ProShop September 2015



Medium Adult 16kg



Maxi Adult 16kg



Giant Adult 20kg



\*Discounts only available at the ProShop during September 2015. Minimum order on the ProShop is 20kgs. All orders delivered freight free.



# Obedience Trial Schedules

The Queensland Dog World



## August amendments and notes

### Rockhampton Dog Obedience Club

Obedience Trial 26<sup>th</sup> September 2015, Mr B. Patterson replaces Mrs T. Young

## Obedience requirements:

- Please ensure that all entry forms are filled out correctly with all relevant information
- No late entries accepted
- All dogs are to remain on grounds and on lead at all times
- All entire bitches on grounds must be vetted
- Bitches in oestrus are not permitted on the grounds
- Prizes and awards are as shown in club catalogue



**Trial day: Saturday, 7th November 2015**

## OBEDIENCE DOG CLUB OF BUNDABERG

Show venue: Diggers Soccer Club, Osborne Street, Norville BUNDABERG

Entries close: Friday, 23rd October 2015

### DOUBLE RALLY-O, TRIAL 1

**Entries to:** Trial Secretary, P.O. Box 5417 WEST BUNDABERG 4670  
**Enquiries:** **Contact:** Ross Smith **Ph:** 0456 370 783  
**Mr D. Strong** Excellent A and B, Advanced A and B, Novice  
**Entry Fees:** \$6 per entry

↩ **Judging time: 2:00pm + Vetting: 1:30pm**

### DOUBLE RALLY-O, TRIAL 2

**Mr C. Pain** All Classes  
**Entry Fees:** \$6 per entry

### DOUBLE OBEDIENCE, TRIAL 1

**Mr R. Barron** UDX and UD  
**Mr B. Knobbs** CDX, CD and CCD  
**Entry Fees:** \$6 per entry

### DOUBLE OBEDIENCE, TRIAL 2

**Mr B. Knobbs** UDX and UD  
**Mr R. Barron** CDX, CD and CCD  
**Entry Fees:** \$6 per entry

Club reserves the right to charge Judges if necessary

↩ **Judging time: 6:00pm + Vetting: 5:30pm**

**Trial day: Saturday, 7th November 2015**

## REDLANDS DOG OBEDIENCE CLUB INC

Show venue: Judy Holt Sportsground, Randall Rd, BIRKDALE

Entries close: Friday, 23rd October 2015

### OBEDIENCE, AGILITY, JUMPERS AND GAMES

**Entries to:** Trial Secretary, P.O. Box 16, CAPALABA 4157  
**Enquiries:** **Contact:** Jan Dixon (Obedience) **Ph:** 0417 291 043  
 Karen Deguet (Agility) **Ph:** (07) 3219 2750

#### TRIAL JUDGES:

<b>Mrs K. Goebel</b>	CCD
<b>Mrs M. Baumann</b>	CD
<b>Ms L. Theile</b>	CDX
<b>Mrs V. Mannion</b>	UD
<b>Mr J. Baumann</b>	UDX
<b>Mr G. Quail</b>	Agility - Masters, Excellent and Novice
<b>Mrs B. Murfet</b>	Jumping - Novice, Excellent and Masters

**Entry fees:** \$7



**Dinner Break 5:30pm**

↩ **Judging time: 6:30pm + Vetting: 5:30pm to 6:15pm**





**Trial day: Friday, 13th November 2015**

## DOGS QUEENSLAND AGILITY SUB-COMMITTEE

Show venue: Dogs Queensland Sports Grounds,  
247 King Avenue DURACK, QLD 4077

**Entries close: Friday, 30th October 2015**



**FUND RAISING TRIAL**

### JUMPERS AND GAMES

**Entries to:** Trial Secretary, P.O. Box 563, JIMBOOMBA 4280

**Enquiries:** **Contact:** Gaille Newton **Ph:** (07) 3297 5908  
entries via [www.k9entries.com.au/ankc](http://www.k9entries.com.au/ankc) preferred

#### TRIAL JUDGES:

<b>Mr J. Brown</b>	Gamblers - All Classes
<b>Mr M. Cowman</b>	Jumping - Open Masters Excellent

**Entry fees:** \$7, catalogues \$2, Cheques made payable to Canine Control Council Queensland

**Novice Jumping to be run in first available Ring**

**⚡ Judging time: 7:00pm + Vetting: 6:15pm**

**Trial day: Saturday, 28th November 2015**

## SUNSHINE COAST DOG OBEDIENCE CLUB

Show venue: Ballinger Rd, Sport Complex BUDERIM QLD 4575

**Entries close: Friday, 13th November 2015**

### RALLY-O AND OBEDIENCE

**Entries to:** Sunshine Coast Dog Training Club,  
P.O. Box 702 BUDERIM 4556

**Enquiries:** **Contact:** Colin Ibbotson  
**Ph:** (07) 5437 6623

#### TRIAL JUDGES:

<b>Mrs K. Hutt</b>	Rally-O, Novice Advanced A and B
<b>Mr J. Baumann</b>	UDX
<b>Mrs M. Baumann</b>	Open
<b>Mr D. Strong</b>	Rally-O, Excelent A and B
<b>Mrs B. Murfet</b>	CCD and Novice
<b>Mr J. Brown</b>	UD

**Entry fees:** \$7 per entry

**⚡ Judging time: 6:00pm + Vetting: 5:00pm to 5:45pm**

**Trial day: Saturday, 14th November 2015**

## METROPOLITAN DOG OBEDIENCE CLUB INC

Show venue: Marchant Park, CHERMSIDE QLD

**Entries close: Monday, 2nd November 2015**

### OBEDIENCE

**Entries to:** Trial Secretary, P.O. Box 337, ZILLMERE 4034

**Enquiries:** **Contact:** Kym Sutherland **Ph:** 0414 672 261

#### TRIAL JUDGES:

<b>Mrs A. Tamblyn</b>	CCD
<b>Mrs N. Leyden</b>	CD
<b>Mrs M. Baumann</b>	CDX 1
<b>Mrs D. Stutz</b>	CDX 2
<b>Mr B. Nobbs</b>	UD 1
<b>Mr J. Baumann</b>	UD 2
<b>Mr R. Barron</b>	UDX 1

**Entry fees:** \$7

**Competitors must park in Ellison Road. Club reserves the right to change Classes and Judges depending on Class sizes**

**⚡ Judging time: 6:30pm + Vetting: 5:15pm to 6:00pm**





# Trial Schedules

The Queensland Dog World



Course day: Sunday, 1st November 2015

## QUEENSLAND SIGHTHOUND ASSOCIATION

LURE COURSING Entries close: Saturday, 24th October 2015

Entries to: Christine Stevens, 11 Ararat St, RIVERHILLS QLD 4074

Enquiries: Contact: Christine Stevens Ph: 0423 587 754

Entry fees: \$10 members, \$12 non-members Venue: Dogs Qld King Ave, DURACK

Start time: 8:00am + Vetting: 7:00am (Qualifying Courses will be run first)



Unleash your champion's photogenic side.



Place your dog's portrait on our Dog World front cover for just \$240 and create a legacy.





## The A - Z of Pedigree Dog Breeders

**Please note:** the details listed in the Breeder's Directory are authorised for publication by the members concerned.

Dogs Queensland offers no warranty of any kind in relation to the standard of any dog offered for sale by a breeder or as to the reputation or skill of any breeder.

★ Denotes accredited breeder



### AIREDALE TERRIER

**OLDBAIRE:** Breeding for Excellence in type, Health & Nature. (07) 5463 7875

**LOVEDALE:** Breed & Puppy Enq Ph: (07) 5546 9016

**FEUERDORN:** Andy Muller Ph: 0415 406 694  
Email: airedales@firethorn.com.au

### AKITA

**TANOSHII:** N. & V. Schneider Ph: 0407 115 674  
Email: tanoshii@tanoshii kennels.com

### ALASKAN MALAMUTE

**POLDARA:** Enq. Sharon Ph: (07) 5546 0303 AH.  
Ph: 0448 460 300 Email: swpoldara@bigpond.com  
Web: www.poldarakennels.com

**DARKSKY:** Imp B/Lines. Ph: 0412 454 753

★ **ICERIVA:** Enq's Jess Ph: 0414 267 507

### AMERICAN STAFFORDSHIRE TERRIER

★ **AMSTARFX:** Kelly Bannan 0457 578 880

### AUSTRALIAN CATTLE DOG

**KELPRIN:** Breeding the Unlimited ACD  
show / sport / work / pets. 0439 932 224

### AUSTRALIAN KELPIE

★ **OATLAND:** D Kent Ph: (07) 3289 1728/0407 025 038

★ **AMAKHOSI:** Jess Reilly Ph: 0416 032 867

★ **KELLOR:** Kelpie pups Dot 0410 638 212

★ **DRYCREEK:** Di Peterson 0424 257 960 Bne

### AUSTRALIAN SILKY TERRIER

**AUSILK:** (07) 5546 0260 www.ausilk.com

**QUINVALE:** Puppy & Stud enq. Ph: (07) 3289 9286

★ **WILLAME:** Aileen Ph: (07) 4163 1734 Nanango

### AUSTRALIAN STUMPY TAIL CATTLE DOG

**CUMBYDENE:** Quality pups 0417 734 479

### BASENJI

**LOMAR:** Louise Ph: 0429 896 558 Enq. welcome.

### BASSET FAUVE DE BRETAGNE

**DESERTHUNTER:** Fun dogs enq 0407 310 782

### BASSET HOUND

**KARETA:** R. & M. Webber, Redland Bay  
Ph: 0418 721 291. Email: kareta@bigpond.com

**AMMIDAN:** K. & A. McGinn www.ammidan.com Samford  
Ph: (07) 3289 4033 ammidan@bigpond.com

### BEAGLE

★ **BURBAY:** Peter & Erika call (07) 5486 6154

### BELGIAN SHEPHERD DOG

★ **MIRRIBANDI:** 0409 619 327 www.mirribandi.com  
Groenendael & Tervueren

**BELGENBEAU:** www.ozbsd.com 0458 040 990

★ **BELGNT:** www.belgnt.com 0408 837 994

### BERNESE MOUNTAIN DOG

**POLISHDREAM:** A Wilkinson, Brisbane  
0411 258 786. Polish import

★ **ZEIGEN:** Kim Haddon (07) 4630 1932  
42 yrs. breeding exp. Imports. Switz / Swed / Russia  
Email: zeigen1@bigpond.com

### BICHON FRISÉ

**SALTBREEZE:** Gold Coast Bichon Frisé.  
Stud & Puppy Enq Jacqui 0416 517 733

### BLOODHOUND

**TRACKMDOWN:** The Real Deal 07 4686 1258

### BORDER COLLIE

★ **TALQUAH:** Hip / DNA tested (07) 5546 3355  
suzanne@talquah.com.au any enquiry

**WOTTAPUD:** B/W & Choc pups. J. & C. Penn  
(07) 5482 2719 bordercollies@wottapud.com

★ **DARJOBA:** Puppies/stud DNA clear:  
Joan dj.bartley@bigpond.com (07) 4934 0489

### BORDER COLLIE

**BAWNTAWN:** Cheryl Brauers. 0407 136 442

**ROWESDALE:** www.bordercollies.com.au  
Bris/G Coast Enquiries Ph: 0409 265 828

### BOXER

**KUDIRKA:** D Kelly Ph: (07) 3888 2230

### BRITISH BULLDOG

★ **WILLAMOND:** Quality, Healthy, DNA Tested  
Dogs. Stud Dog & puppies sometimes available. Enquiries  
please call 0409 481 925 or www.willamond.com

★ **RUNDERKRAAL:** Enq welcome (07) 4698 4125



# Registered Breeders Directory

The Queensland Dog World



## BULLMASTIFF

★ **PARADIGM:** Ph (07) 3399 1137 Brian and Rosemary Miller. Simply beautiful Bullmastiffs

**MEMRABULL:** 0451 553 535 memrabull.com

★ **GUARDVILLE:** Leanne Eng (07) 5486 2948

★ **SATURNBROOK:** Sue Enq 0413 800 058

## BULL TERRIER

**KUPALA:** Stud & Puppies Ph (07) 4975 7306

★ **DENOTANY:** All Enquiries Welcome (07) 5546 3003

★ **BULLYTRAX:** All Enquiries (07) 5576 7747

**CAITSAM:** All Enq. Welcome (07) 5460 9337

★ **SATORI:** Stud & puppy enq 0402 090 212

## BULL TERRIER (MINIATURE)

**DABEWS:** Stud-Puppy Enq (07) 5497 8736

**PAGWIN:** All enq. welcome (07) 5485 3460

## CANE CORSO

**AWESOMISSIMO:** Shelley (07) 4097 6561

## CAVALIER KING CHARLES SPANIEL

**CURRINDABELA:** Cert. healthy lines Carolyn on (07) 5498 7681

★ **ELLAURENA:** Ph. Helen 0488 357 457

★ **JASTBAH:** www.jastbah.com.au (07) 5428 0295

## CHESAPEAKE BAY RETRIEVER

**TENARDA:** Only the best will do! 0417 606 214

**WEBFOOT:** Show / Field www.dogs.net.au/  
webfoot 0438 869 594

## CHIHUAHUA (LONG AND SMOOTH COAT)

★ **WACHOWA:** Mrs. J. Watt – Ph: (07) 3372 3654

**PEPELOPAZ:** June Evans JP (07) 4959 5469

★ **TARQUILA:** Ann Parker Ph (07) 4170 0609

## CHOW CHOW

★ **MALABOO:** Puppies sometimes available  
Enq. welcome. Sandra & Keith Ph: (07) 3491 3350

**REGALCHOW:** regalchow@outlook.com.au 0437 212 509

## COCKER SPANIEL

**WATERVAAL:** Gwen Hansen (07) 5498 1296

**CHRISMAR:** Family Cockers (07) 5437 0452

## COLLIE (ROUGH)

**KEAMAREE:** Est. 1980. Exc. Temp., stud /  
pups, 3 colours, eye tested. (07) 4157 2758

★ **TRENWYTH:** www.trenwythcollies.webs.com  
Pups / Stud (07) 5544 9233 Beaudesert

★ **HIGHCLERE:** Cecilie Kemp (07) 3297 5290

## DACHSHUND (MINIATURE LONG HAISED)

**DIZAMINI/CLARATAN:** S. Mundt & H. Wildridge  
Ph (07) 3294 6745

**VALGARDEN:** Val Bowden (07) 3800 1127

**SPLENDAK:** Yvonne Shaw (07) 5496 7020

## DACHSHUND (MINIATURE SMOOTH HAISED)

**JOHNSANNA:** M. Johnson 0400 661 861

**ASSUANA:** GW & RF Assay (07) 4664 4069

**ABJEKT:** Quality Pups 0419 685 534

**DAKLEY:** Daryl Cross (07) 3209 7321

**SPLENDAK:** Yvonne Shaw (07) 5496 7020

**DAXHAUS:** Marilyn Dyckhoff (07) 4155 1443

## DACHSHUND (MINIATURE WIRE HAISED)

**AGWYR:** Stud & pups (07) 3372 6549/0404 050 040

**MEYDAK:** www.meydak.com 0405 446 940

## DACHSHUND (SMOOTH HAISED)

**LAEN:** Breeding from quality, healthy, back- x-rayed dogs  
Ph: (07) 5543 1395

## DALMATIAN

**VAREWELL:** For wonderful companions. Enq welcome  
0417 797 279

**PACEAWAY:** Top quality in spots (07) 5464 2554

## DOBERMANN

**WATTAVUE:** Stud & Puppies (07) 5467 2035

**GLANIKDOBE:** Enq. welcome (07) 3285 5001

**STONHONDES:** Pups most time 0429 922 447

**BELAFIR:** Int. Ch at Stud; 0413 800 213

## DOGUE DE BORDEAUX

★ **RUNDERKRAAL:** European Imp's (07) 4698 4125

**CRIMSONCHARM:** Defying the Ordinary  
www.crimsoncharm.com Ph: 0405 749 005

**BORDOGUE:** Type, structure and temperament. Enq.  
0412 498 707

## FOX TERRIER (SMOOTH)

**MYSTREEBOX:** Stud & Puppies 0451 945 553

**ROSEFOXII:** Stud & Puppies, 0402 764 574

## FRENCH BULLDOG

★ **BONZABULL:** Info, Pups, Stud 0409 766 929

★ **PAINTDPRETTY:** French Bulldogs quality  
DNA tested pups enquiries 0419 703 373

## GERMAN PINSCHER

★ **RAVENRED:** Pup/Stud Enq (07) 5478 8724

## GERMAN SHEPHERD DOG

★ **DEBBAR:** Show, Obed, Pets, (07) 4667 3910

★ **VONEHRLICH:** Pups Dogs (07) 3390 1132

★ **WINOLA:** www.winolakennels.com

★ **KASSAAR:** Puppies, older dogs, Qlty. Ex.Temp, Imported  
dogs & Stud dogs (07) 5423 2575 www.kassaar.com

★ **KANTENNA:** Est. 1964. Ph: 0411 433 739

★ **KIESERHUND:** Pup Enq – Info (07) 5463 5286

## GERMAN SHORTHAIRED POINTER

★ **DARLINHART:** Matt & Tanya. Visit us at  
www.darlinhart.com or Ph: (07) 4630 5412

★ **TEALPOINT:** Show, Field, Obedience  
www.dogs.net.au/tealpoint 0438 869 594

## GOLDEN RETRIEVER

★ **ROCKGOLD:** Kay Boston 0438 768 469

## GREAT DANE

**VANDANE:** Fawn & Brindle American Lines (07) 4778 8462  
www.vandane.com.au

## GRIFFON BRUXELLOIS

★ **TZANI:** 0429 444 499, www.tzani.com.au

## HUNGARIAN VIZSLA

★ **HABANERO:** www.habanerovizslas.com Ronalie Frew  
(07) 5486 5825 Enq welcome.





# Registered Breeders Directory

The Queensland Dog World



## HUNGARIAN WIRE HAired VIZSLA

★ **HUSEGES:** (07) 3700 4009 Show Obedience

## IRISH SETTER

**HIGHPERELLE:** Call Carolyn Pearen 0417 791 254.  
cmpearen@bigpond.com

**CHEPAURYLL:** Call Cheryl 0438 598 597  
www.irishsetters-whitsunday.com

★ **YARRAMO:** Established 1974. For quality contact the Nortons (07) 4157 8338

## IRISH WOLFHOUND

**CELTICBLISS:** Ph: Joan Powell (07) 5496 4163

**IRISHROCK:** Diann Hart (07) 4922 2681

**DONGUNYA:** J&S Donaldson (07) 4697 1349

## ITALIAN GREYHOUND

**ELEQUANCE:** Friendly help 0415 841 727

★ **FURPERSON:** Blue Specialist NQ 0409 991 605

## JACK RUSSELL TERRIER

**CASMARA:** 1986. Tweed 02 6672 1773 (Reg755740)

★ **ZEIGEN:** Kim Haddon (07) 4630 1932

**JACKIRRA:** Show Pet Stud Ph: (07) 5546 0327

## KEESHOND

**KABANDER:** All enq. welcome: 0438 702 690

## LABRADOR RETRIEVER

★ **SARSHAI:** Stud / puppy Enq: (07) 3289 4859

★ **DEWICK:** Stud/Puppy enq. (07) 5497 9013

★ **BOOROOMGAI:** E. Gale Ph: 0447 477 097

**TENARDA:** Proven quality always. 0417 606 214

★ **EVERSLY:** Alison 0407 743 158 Norman PK

**ROSELOCK:** Stud/Puppy Enq 0408 684 979

**WINTOPPI:** Stud / Puppy enq: (07) 4168 7225

★ **SOUTHBANK:** M & B Sheppard (07) 3297 5570

**LABRADDELL:** Enq. Wilhelm 0409 227 674

**JAYWICK:** Bred Labs from 1952 (07) 5411 4685

★ **AVOKAH:** www.avokahlabs.com (07) 4159 9192

## LAGOTTO ROMAGNOLO

★ **AMICILEALE:** Our loyal friends.  
Ph: 0400 903 303. www.lagottoqld.com

## LHASA APSO

**SENGKYILA:** A&J Callan CQ 0411 370 706

★ **NGESONG:** K Johansen (07) 4036 2168

**KRADDSELL:** Puppies 0402 314 367

## LOWCHEN

**PACEAWAY:** Lovable little lions (07) 5464 2554

## MALTESE

★ **SCHNEEWICHEN:** Ch. lines. Estd 35yrs. Cathy (07) 5446 7706

## MANCHESTER TERRIER

**MANCHES:** Quality UK imp/ Aus Ch & Pups  
Breeding since '89. Enq. (07) 5476 2563

**GALLIFREYAN:** Pups & info (07) 3390 8408

## NEAPOLITAN MASTIFF

★ **WAMPHYRI:** Pups Stud Enq (07) 4683 7001

## PAPILLON

**QUINVALE:** Puppy & Stud Enq. (07) 3289 9286

★ **ROESWAIN:** J. Moy Ph. 0427 128 009.  
Enq. welcome roseswain@live.com.au

## PEKINGESE

**TAOTSING:** Joice Ph: (07) 3206 6018

## POMERANIAN

★ **ZEIGEN:** Kim Haddon. (07) 4630 1932. Breeder of #4  
Pom USA 2014. Imports From 5 Countries, combining Best  
of Int. Champs. Email: zeigen1@bigpond.com

## POODLE (MINIATURE)

**MYFLAIR:** Black & white pups / stud.  
myflairkennels.com (07) 3711 9282.

**ADELTOY:** Brown Apricot White Silver Ph Merle  
(07) 5541 4996 0438 891 828 PRAA

**SUNSHINESTAR:** J Elliott (07) 4668 5792.

## POODLE (STANDARD)

**TREVASCO:** silver, blue, beige. Phone  
Elizabeth 0428 738 700 www.trevasco.com

**ADELTOY:** Merle (07) 5541 4996 Bl, Br, White

★ **NEGRESKA:** Enq Iris (07) 3408 6841

## POODLE (TOY)

★ **BELLISSIMA:** Black / Brown. (07) 4096 2367  
bellissima36@bigpond.com

★ **SILKYELK:** Brown/black pup/stud enq ph  
0409 409 455. Quality toys PRA clear  
debra@silkyelk.com.au silkyelkpoodles.com

**ADITHE:** Black / Brown Pups / Studs PRA Clear,  
0414 707 475 Email: judithmcr@hotmail.com

★ **MAXILA:** Pup enq. 0468 770 760

**MULHULS:** PD & CA Gross (07) 3286 3023  
mulhuls@bigpond.com 0417 157 836

**ADELTOY:** Merle 0438 891 828, (07) 5541 4996

**SUNSHINESTAR:** J Elliott (07) 4668 5792

**TINYLATOY:** Pup/Stud Enq Julie 0450 074 600

★ **KRISHNA:** White Toys Exclusively Pattern  
A Puppies. Ph Val (07) 3857 3682

## PUG

**JEMINELLE:** Janelle Bris (07) 5546 3166

**KILAMAR:** Quality Ph Marie (07) 5484 6251

**LERILLA:** Quality. Enq. welcome. fancee@  
optusnet.com.au Maureen Bris 0427 461 260

**CAMEOLA:** Fawn and black (07) 3273 8713

## PYRENEAN MOUNTAIN DOG

**SHATAODOE:** Amanda Everson (07) 3200 0321

## RHODESIAN RIDGEBACK

**MARMATIA:** Qual. lines xrayed (07) 5441 4052

**CHILOLO:** 0410 651 756 www.chilolo.com.au

★ **STARRIDGE:** Cyndy 0428 452 096 or starridgers.com  
For love of the breed.

**ADDESARE:** Stud and pups 0419 782 334. nd

## ROTTWEILER

**ZENDOTAH:** zendotah@live.com.au 0412 378 395

★ **SANTAESQUE:** Pup/Stud Enqs (07) 5485 7970

**KYSURAKYAN:** Breeding Quality over 37  
years, (07) 3889 1562, www.kysurakyan.com

**MONTMILL:** Stud/Puppy Enq 0431 246 735

## SALUKI

**ASHROSE:** Frances Rieck (07) 4666 3796



### SAMOYED

**SHACAR:** Stud & Puppy Enq. 0428 749 951

### SCHNAUZER

★ **KLABAUTER:** www.standardschnauzer.com.  
au Imp black Ch. lines. 0414 572 289

### SCHNAUZER (GIANT)

★ **MUNCHENER:** Yvonne Hopf (07) 5485 3355.  
Pep/salt imports. www.munchener.net

### SCHNAUZER (MINIATURE)

★ **SPRYNGE:** Enq (07) 4698 7080. Since 1981

**BABETAL:** www.minischnauzersaust.com Phone:  
Caroline (07) 5424 6106 / 0408 356 739

### SCOTTISH TERRIER

**REEFSCOTT:** P Redpath 0427 480 260

**TOWNSCOTT:** Stud / Puppy Enq (07) 4773 2559

### SHAR PEI

**GABLEHAUS:** Ongoing support (07) 3202 6509

### SHETLAND SHEEPDOG

**MALLARABA:** Carolyn Pfeiffer (07) 5464 5221

### SHIH TZU

**SHUMAR:** Pup and Stud Enq 0410 729 215

### SIBERIAN HUSKY

★ **BLUEMOOSKA:** Qld's longest standing breeder. Multiple  
BIS / BISS dogs. Ph: (07) 5546 9768 / 0403 071 485

**AUSDANSKE:** Andrew Larsen. Dk Imp  
0412 567 639. Email ausdanske@hotmail.com

### STAFFORDSHIRE BULL TERRIER

★ **KASALILLY:** www.kasalillykennels.com

★ **LILCRACKA:** DNA CLR HC & L2. Stud & Pup  
Enq www.lilcrackastaffords.com.au

★ **BOROLO:** Type, Temperament, All Health Tested &  
Clear. Stud / Pup enq welcome www.borolostaffords.  
com (07) 5426 2605

**TRYLOU:** All Colours Show / Pet / Stud. Puppy  
Enq. Ph: Lou (07) 4956 4645 / 0428 437 678

★ **ELBELLARIDGE:** Enq always welcome. All  
colours www.elbellaridge.com

★ **SLAVESTAFF:** Pup+Stud enquiries Ph 0429 949 491

**ZANZOBLUE:** Enq welcome 0402 145 760

**ZKIZIM:** Puppy enq. Jan 0400 907 562

### ST. BERNARD

★ **SNOMARK:** All Enq. Welcome. Est 1986.  
(07) 3814 2277 ann@snomarkstbernards.com

**LYMPNE:** Allan Johnson. All enq. welcome.  
(07) 5445 9805. lympne@tpg.com.au

**ABONEAPARTE:** Big Sound Saints with a sense of  
Humour 0419 723 344

### TENTERFIELD TERRIER

★ **TAPPAKAI:** John Bourke (07) 5424 2112

### TIBETAN MASTIFF

**AMITABHA:** B&P Dickson 0407 552 143

### TIBETAN SPANIEL

**BOLDSTAR:** Robyn Ph: (07) 4934 0327

### TIBETAN TERRIER

★ **AYRMANN:** Vyvyan Mannion (07) 4163 1953

★ **BAKIT:** G. Lawrence (07) 4936 1608

### WEIMARANER

**KADMA:** Carol Thompson 0418 723 989

### WELSH CORGI (PEMBROKE)

**CUUCHIN:** Joyce Wheeler. Ph (07) 5496 9808

### WEST HIGHLAND WHITE TERRIER

**TERRYWHITE:** Mrs B. Boyce (07) 5484 1988

**WESTIESTARRS:** of Woodford Ph Sky 0407 756 394

### WHIPPET

**JUNABEEZ:** www.junabeez.webs.com

★ **GRAU:** Pat (07) 3888 1999. pat.joy@bigpond.com

**PIAFFE:** Est 20+ years Quality imported & Aust Lines  
ulla@leatherwoodlodge.com Mrs U Greenwood  
(07) 3374 4122.

**CHICOTEVA:** Jenny Grother 0409 751 158

### XOLOITZCUINTLE

**AMORENEKID:** www.adourstudkennels.com.au Email  
adourstudandkennels@gmail.com

### YORKSHIRE TERRIER

**KAROJENBE:** Linda Shaw 0417 434 536  
Email: aaayorkie@bigpond.com









# Kennel Clubs Directory

The Queensland Dog World



**Sunshine Coast Dog Obedience Club Inc:**  
Mrs J. Robinson, P.O. Box 702 Buderim 4556  
Ph: 0409 669 704 Email: sjrobo@bigpond.com

**Tablelands Dog Obedience Club:** Ms J. Fornier,  
44 Mable St Atherton 4883 Ph: 0487 356 580  
Email: tablelanddogobedienceclub@gmail.com

**Toowoomba Dog Obedience Club Inc.:** Mrs.  
S McIntyre, PO Box 3606VF, Toowoomba 4350  
Ph: (07) 4696 7393. Mob 0438 807 930  
Email: enquiries@dogstooowoomba.org.au  
Website: www.dogstooowoomba.org.au

## FIELD TRIAL

**Field & Retrieving Association for Gundogs Inc:** Mr G Dawson, 67-69 Hawthorn Rd,  
Burburgery 4505. Ph: (07) 3886 6367.  
Email: geoff.jan.dawson@bigpond.com.au

**Labrador Retriever Club of Qld Inc:**  
Mrs M. Wedgwood, PO Box 382, Samford 4520  
Ph: 0417 606 214  
Email: tenarda@iprimus.com.au  
Website: www.labradorclubqld.com

**Wide Bay Working Gundog Club:**  
Mrs W Michalk 232 Barolin St, Bundaberg 4670  
Ph: (07) 4152 2362 Email: jagacey@hotmail.com

## SOCIAL CLUBS - UNAFFILIATED CONFORMATION

**Alaskan Malamute & Siberian Husky Social Club (Qld.) Inc.:** Mr J Van Buggenum, PO Box  
1037, Gailles 4300. Ph: 0402 636 763  
Email: secretary@amsqc.com.au  
Website: www.amsqc.com.au

**Basenji Breed Network Queensland Inc.:** Ms  
E Blair, PO Box 1060, Spring Hill 4004  
Ph: 0402 580 898 Email: ethel.blair@gmail.com  
Website: www.basenjibreednetwork.org.au

**Bernese Mountain Dog Social Club of Qld:**  
Mrs J Hazell, 53 Allambie St, Carina 4152  
Ph: (07) 3843 1407 Mob: 0421 042 788  
Email: teresajackie@optusnet.com.au

**Soft Coated Wheaten Terrier Society of Qld:**  
Mr. K. Hetherington, 17 Sarah St., Annerley 4103  
Ph: (07) 3848 4242  
Email: cmhetherington@gmail.com

**Tibetan Spaniel Social Club of Qld:**  
Mrs V Schneider, 24-44 Mountain Ridge Rd, South  
Maclean 4280 Ph: 0407 115 674.  
Email: tanoshii@tanoshii kennels.com

## OBEDIENCE

**Dogz Cairns Inc:** Ms S Daniels, PO Box 644,  
Smithfield 4878 Ph: (07) 4057 6784  
Email: dogz cairns@yahoo.com.au  
Website: www.dogz cairns.org

**Warwick Dog Obedience Club:** Ms B. McGregor  
PO Box 35 Yangan 4371 Ph: (07) 4664 8050  
Email: warwickdogobedience@gmail.com

## FIELD

**Qld Lure Coursing Association Inc:** Mrs S  
Burrows, PO Box 366 Underwood 4119  
Ph: 0405 791 646.  
Email: rodburrows0@hotmail.com

## BREED RESCUE SERVICES

**AFGHAN HOUND:**  
Contact: Mrs H. McKay Ph: (07) 3297 7538

**AIREDALE TERRIER:**  
Contact: Ms B. Thomson. Ph: (07) 3378 9308

**ANIMAL AMBULANCE / CRUELTY REPORTS:**  
Contact: Ph: 1300 852 188

**AUSTRALIAN SILKY TERRIER:**  
Contact: Miss R. Hunt Ph: 0400 246 987  
Email: rachnut@hotmail.com

**BASENJI:**  
Rescue Co-ordinator Contact: Ms C. Qualischefski  
Ph: 0429 979 326 / 0422 184 755  
Email: channieq@gmail.com

Contact: Ms C. Benson Ph: 0468 364 031  
Email: carolsmail74@gmail.com

Contact: Ms E. Blair Ph: 0402 580 898  
Email: ethel.blair@gmail.com  
Website: www.basenjibreednetwork.org.au

**BEAGLE:**  
Contact: Mrs W. Lines, Ph: (07) 3290 2973  
Mob: 0428 779 323  
Email: rescue@beagleclubqld.org

**BELGIAN SHEPHERD:**  
Contact: Mrs K. Winton Ph: 0409 619 327  
Email: secretary@bsdccq.com

**BERNESE MOUNTAIN DOG:**  
Contact: Ms J Hazell, Ph: (07) 3843 1407  
Mob: 0421 042 788  
Email: teresajackie@optusnet.com.au

**BORZOI:**  
Contact: Ms V. Dawson. Ph: (07) 3857 3682

Contact: Mrs B. Mangin. Ph: (07) 4156 1078

**BULLDOG:**  
General Enquiries Contact: Mrs D Morrison-  
Teirney Ph: 0448 211 140

North of Sunshine Coast. Contact: Mr D.  
Ravenscroft Ph: (07) 4129 2205

Gold Coast. Contact: Ms B. Halliday  
Ph: (07) 5543 6750

Brisbane. Contact: Ms M. Lloyd  
Ph: 0400 248 138

Contact: Mr L. Perrett  
Ph: 0452 210 184

**BULLMASTIFF:**  
Contact: Mrs B. Dalby Ph: (07) 5543 5917 Mob:  
0414 435 919

Contact: Mrs R. Armstrong Ph: (07) 5546 8427  
Mob: 0401 145 129

**BULL TERRIER:**  
Contact: Mrs M. Reynolds Ph: (07) 5546 3003  
Website: www.qldbullterrierrescue.com  
Email: qldbr@bigpond.com

**CAVALIER KING CHARLES SPANIEL:**  
Contact: Ms L. MacMillan Rehoming Officer,  
Ph: 0419 339 150  
Email: liza.mac@internode.on.net

**CHESAPEAKE BAY RETRIEVER**  
Contact: Ms M Wedgwood Ph: 0417 606 214  
Email: tenarda@iprimus.com.au  
**CHINESE CRESTED DOG:**  
Contact: Ms S. Richards, Ph: (07) 5596 0636  
Mob: 0411 094 439

**COLLIE ROUGH & SMOOTH:**  
Contact: Mrs J Armatys, Ph: (07) 4157 2758  
Email: keamaree@bigpond.com

**DACHSHUND:**  
Contact: Mrs V. Lingard. Ph: (07) 3800 1127

**ENGLISH SETTER:**  
Contact: Mrs C. Gorey Ph: 0438 598 597  
Email: goreymky@bigpond.com

**DOGUE DE BORDEAUX:**  
Contact: Mrs J Bloomfield Ph: 0412 119 688  
Email: ddbrescue@hotmail.com

Contact: Mrs V. McArthur Ph: 0417 767 357  
Email: info@amedange.com

**GERMAN SHEPHERD DOG:**  
Contact: Mrs J Hansford, Ph: (07) 3289 7282  
Email: jehansford@techsus.com.au

**GERMAN SHORTHAIRED POINTER:**  
Contact: Mrs B. Mangin. Ph: (07) 4156 1078  
Ph: (07) 5464 3973.

**GOLDEN RETRIEVER:**  
Contact: Miss K. Hailwood Ph: 0411 426 678  
Email: grcqlq@gmail.com

**HUNGARIAN VIZSLA:**  
Contact: Mrs. K. Eory Ph: (07) 3265 1621

**IRISH RED & WHITE SETTER**  
Contact: Mrs C. Gorey Ph: 0438 598 597  
Email: goreymky@bigpond.com

**IRISH SETTER**  
Contact: Mrs C. Gorey Ph: 0438 598 597  
Email: goreymky@bigpond.com

**LABRADOR RETRIEVER:**  
Contact: Mrs S Luchterhand Ph: (07) 5546 0772

**LAGOTTO ROMAGNOLO:**  
Contact: Mrs P Wyllie Ph: (07) 4163 7288  
Mob: 0400 903 303  
Email: trish@lagottoqld.com

**LHASA APSO:**  
Contact: Ms J. Woodward,  
Ph: (07) 5428 6201 Mob: 0413 788 775  
Email: jane@hasaapso.com.au

**MAREMMA SHEEPDOG:**  
Contact: Ms H. Brennan. Ph: (07) 5426 4103

Contact: Mrs M. Keen Ph: (07) 5463 8466

**OLD ENGLISH SHEEPDOG:**  
Contact: Mrs A Cassidy Ph: (07) 3201 0952  
Email: ottaba@bigpond.net.au

**POINTER:**  
Contact: Mrs R Glegg Ph: (07) 5547 1689  
Mob: 0439 830 495. Email: robyneg6@iinet.net

**POODLE (MINIATURE) - SOUTHSIDE:**  
Contact: Ms L. Keen Ph: 0488 004 800  
Email: lynne.keen@yahoo.com.au

**POODLE (STANDARD) - SOUTHSIDE**  
Contact: Mrs S Graham Ph: (07) 5547 0542  
Email: segram@ozemail.com.au

**POODLE (TOY) - SOUTHSIDE**  
Contact: Ms L. Keen Ph: 0488 004 800  
Email: lynne.keen@yahoo.com.au

Contact: Mrs C Collin Ph: 0434 055 066  
Email: cazria@bigpond.com.au

**PUG:**  
Contact: Ms H. Jordan, Ph: 0415 370 526  
Email: pugrescueqld@optusnet.com.au

Contact: Carol-Ann Ph: (07) 3814 1382  
Mob: 0438 515 895  
**PYRENEAN MOUNTAIN DOG:**  
Contact: Mrs. A. Everson. Ph: (07) 3200 032

**RHODESIAN RIDGEBACK:**  
Contact: Mrs. R. Smith. Ph: (07) 5529 9903  
Email: ridgies1@bigpond.net.au

**SAINT BERNARD:**  
Contact: Mrs L Newman Ph: 0438 076 756  
Contact: Mrs B Barnes Ph: 0426 218 065

**SCHNAUZER:**  
Contact: Mrs. T. McNab Ph: 0409 061 975  
Email: schnauzerrescueqld@hotmail.com

**SKYE TERRIER:**  
Contact: Mrs H. MacGregor  
Ph: 0428 947 110 Mob: 0429 999 053

**STAFFORDSHIRE BULL TERRIER:**  
Contact: Miss M. Nielsen. Ph: 0419 631 221

**TIBETAN SPANIEL:**  
Contact: Miss A. Caer. Ph: (07) 3351 7257  
Mob: 0402 555 508 Email: qtsrr@optusnet.com.au  
Website: http://members.optusnet.com.au/aricaer/qtsrr

**WEIMARANER:**  
Contact: Mrs J. Glover Ph: 0419 663 942

**WEST HIGHLAND WHITE TERRIER RESCUE:**  
Contact: Mrs A. Cloughley Ph: (07) 3206 6460  
Email: redinbrin1@bigpond.com

**WHIPPET:**  
Contact: Ms S. Spencer Ph: (07) 5571 5441  
Mob: 0407 735 242  
Email: suespencer@iprimus.com.au

**YORKSHIRE TERRIER:**  
Contact: Miss R Hunt Ph: 0400 246 987  
Email: rachnut@hotmail.com

**ROYAL CANIN**





# Rates Guide

The Queensland Dog World



Colour ads are now available in Dog World magazine. For more details of our very reasonable rates, please contact Ros at the office on:

Ph: (07) 3252 2661 or email info@dogsqueensland.org.au

### ADVERTISEMENT SIZE AND REQUIREMENTS:

**Full page:** 210mm (W) x 275mm (H) with a 5mm bleed

**1/2 page horizontal:** 195mm (W) x 114mm (H)

**1/2 page vertical:** 92mm (W) x 230mm (H)

**1/4 page:** 92mm (W) x 114mm (H)

**1/8 page:** 92mm (W) x 57mm (H)

All photographic files and ads are required as CMYK at 300 DPI and preferably in a TIFF Format.

PLEASE ENSURE ALL FONTS ARE EITHER INCLUDED OR OUTLINED

### FRONT COVER (PORTRAIT ONLY):

**Full cover:** 210mm (W) x 275mm (H) with a 5mm bleed

### SCHEDULES ADVERTISING CHARGES:

Full page CH	\$376.00
Half page CH	\$196.00
Quarter page CH	\$129.00
Full page OS	\$300.00
Half page OS	\$156.00
Quarter page OS	\$103.00
Field Trials / Sweepstakes - reduced advertising	\$26.00

**PLEASE NOTE:** All Schedules, with the exception of Field, Tracking or Dances with Dogs Trials, must be a minimum of a Quarter Page each, these Trials may be advertised at the Reduced Size.

If the Schedule has additional Judges or requires additional information to be published, a larger page size may be required.

### CLASSIFIED ADVERTISING CHARGES:

Per line	\$12.00
Minimum	\$24.00

ALL ADVERTISING MUST BE PRE-PAID

### CONTENT SUBMISSION GUIDELINES:

**PHOTOGRAPHS:** All photographs used in the Queensland Dog World must be TIFF files, CMYK, 300 DPI and must be accompanied by a stamped, self-addressed envelope of the appropriate size. **Photographs sent without an S-SAE will not be returned.**

**ADVERTISING:** The publishers accept no responsibility for the contents of advertisements. All advertisements are accepted in good faith and the liability of advertising content is the responsibility of the advertiser. **Area sizes may change, please check when booking space.**

**ARTWORK:** Charges for artwork and/or for reproduction of photographs will be by negotiation and the publishers reserve the right to refuse or cancel without notice any advertisements in any publication issued by them.

**COPYRIGHT:** Persons submitting copyright material for inclusion in the Queensland Dog World must ensure that the necessary acknowledgement is included on advertisement copy submitted.

## CHARGES DIRECTORY - APPLICABLE FROM 1<sup>st</sup> JANUARY 2015

Please Note: All prices are inclusive of GST. Prices are subject to change

### MEMBERSHIP FEES

Joining fee	\$38.00
Single	\$69.00
Joint	\$106.00
Junior (no joining fee)	No fee

### PREFIX

Application (includes maintenance for year applied)	\$137.00
Maintenance	\$43.00
Transfer	\$62.00

### CLUB AFFILIATION FEES (South of the 26th Parallel)

All Breeds and Multiple Groups	\$546.70
Obedience Clubs	\$404.10
Single Group and Multi Breeds Clubs	\$344.75
Speciality Breed Club	\$309.10
Agricultural Societies	\$309.10
Tracking and Field Trials Clubs	\$202.05

### CLUB AFFILIATION FEES (North of the 26th Parallel)

All Breeds and Multiple Groups	\$475.40
Obedience Clubs	\$309.10
Single Group and Multi Breeds Clubs	\$273.35
Speciality Breed Clubs	\$250.55
Agricultural Societies	\$249.55
Tracking and Field Trials Clubs	\$166.40

### SOCIAL CLUBS

Social Clubs (regardless of location)	\$166.40
---------------------------------------	----------

### JUDGES LICENCE FEES

Championship Show Judges	\$58.00
Obedience, Herding and Field Trial Judges	\$58.00
Breed Championship Judges	\$58.00
Open Show Only Judges	\$58.00
Obedience and Field Sweepstakes Judges	\$51.00
Earthdog Judges	\$51.00
Training Fees for Aspiring Judges	\$34.00
Handler Judges	No Fee

### REGISTRATIONS PER PUP (\$1.10 from each puppy is donated to Canine Research)

Under 3 months	\$41.00
Over 3 and under 6 months	\$68.00
Over 6 and under 12 months	\$85.00

### TRANSFERS (If received within 14 days from the date of transfer)

Members	\$26.00
Non-members	\$34.00

### TRANSFERS (If received after 14 days from the date of transfer)

Members	\$40.00
Non-members	\$52.00

### RE-REGISTRATIONS OF DOGS / SEMEN

Imported dogs/semen	\$108.00
Imported dogs/semen - NZ only	\$72.00
Tenterfield Terriers	\$33.00
Sporting Register	\$34.00
Associate Register	\$17.00

### TITLES

All Championship Titles (incl. breeders cert)	\$34.00
All other awards	\$24.00
Extra copy Breeders Certificate	\$10.50
Laminating	\$5.50

### OTHER

Lease agreements	\$55.00
Replacement certificates	\$21.00
Export pedigree	\$68.00
Extended pedigree (5 generations)	\$34.00

### STATIONERY

OFFICIAL SHOW ENTRY FORMS (Book of 50) including postage	\$7.00
RULE BOOKS CCC (Qld)	\$6.60
Postage per book	\$2.10

### RULES FOR THE CONDUCT OF:

Obedience Trials	\$7.70
Obedience Trials A5	\$4.50
Retrieving Trials for Gundogs	\$7.70
Field Trials for Pointers and Setters	\$5.50
Field Trials for Utility Gundogs	\$5.50
Field Trials for Spaniels and Retrievers	\$7.70
Agility Trials or Games	\$5.50
Agility Trials or Games A5	\$3.50

Tracking Trials	\$5.50
Track and search	\$5.50
Postage per book	\$1.65

### DOG WORLD MAGAZINE

Dog World magazine and Postage per book (Australia)	\$7.00
Postage per book (overseas)	\$8.80

### BREED STANDARDS

Full set of 8 (7 x Groups + 1 glossary of terms)	\$52.80
Small binder	\$3.30
Large binder	\$8.80
Postage per full set	POA
Single group	\$6.60
Breed extensions	\$4.40
Loose leaf breeds	\$0.55
Postage per book	\$2.10

CHALLENGE CERTIFICATES	\$0.44
Neuter challenge	\$0.44
BEST OF BREED CERTIFICATES	\$0.44
Neuter of breed	\$0.44
RESERVE CHALLENGE CERTIFICATES	\$0.44

### SET STEWARDS GRAPHS

(10 + 2 General Specials sheet(s))	\$5.28
JUDGES BOOKS (each)	\$3.30
JUDGES CONTRACTS (set of 10)	\$8.80

### OBEDIENCE JUDGING CHARTS

Novice, Open, Utility and or Agility (25 sheets per set)	\$4.40
--	--------

### QUALIFYING CERTIFICATES

Obedience Trial	\$0.44
Agility Trial	\$0.44
Tracking Trial	\$0.44
Retrieving Ability Test for Gundogs	\$0.44
Track and Search	\$0.44
Dances with Dogs	\$0.44
Rally-O	\$0.44

### GROUP AWARDS

(1 Best in Show and 7 Best in Group)	\$6.27
--------------------------------------	--------

POSTAGE FOR BULK STATIONERY ORDERS WILL BE INVOICED



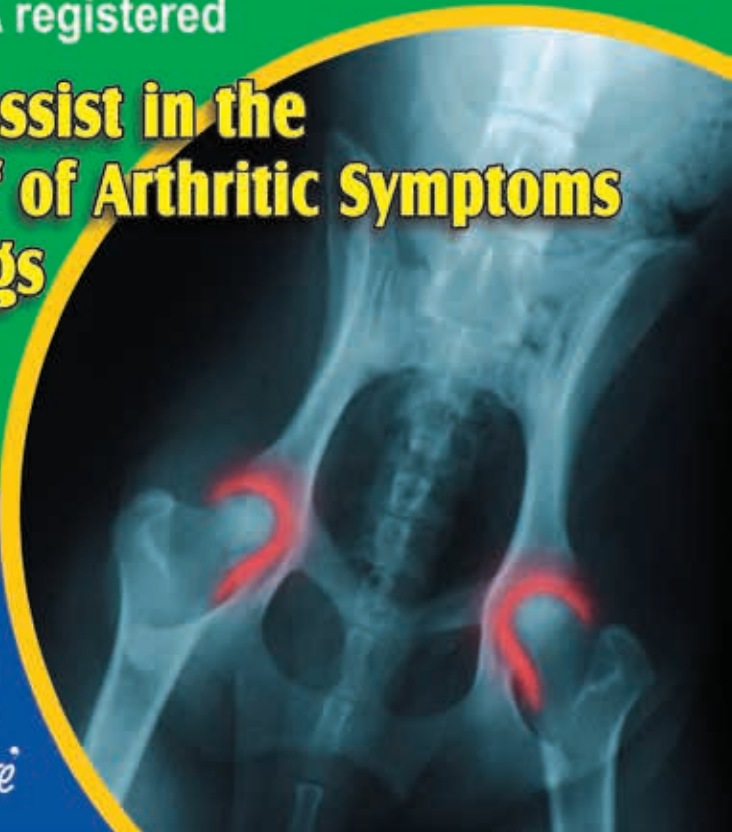
# PERNAEASE POWDER

Safe, Effective Joint Relief



- Natural relief from pain and inflammation
- No artificial additives
- Marine sourced glycosaminoglycans and chondroitin sulphate
- Highly palatable and well tolerated
- APVMA registered

**May assist in the Relief of Arthritic Symptoms in dogs**



**NEW**

125g PACK SIZE AVAILABLE NOW!  
"The perfect starter pack size to complement the existing 250gm Pack"

**MAVLAB PTY LTD**

29-33 Rowland Street Slacks Creek QLD 4127

Ph: 07 3808 1399 Fax: 07 3808 4328

[www.mavlab.com.au](http://www.mavlab.com.au)





*We Do Care*

**Become a . . .**

## Petplan preferred breeder

You can send your puppies to their new homes with **6 weeks free** insurance

-  Immediate cover for accident/injury and a 72 hour waiting period for illness
-  Free for you to issue and costs the new owner nothing
-  Easy online activation on behalf of the new owner



**Earn  
rewards  
for every  
policy you  
issue**

Register today at [petplan.com.au/qld](https://petplan.com.au/qld)  
or call **1300 738 225**

Every pet deserves

