

NOVEMBER 2022

# DOG WORLD



**BREED FEATURE**  
*Australian Shepherd* p10

**TICK PARALYSIS**  
And Treatment p26

**CHAMPIONSHIP SHOWS**  
In Review p17

**DANCES WITH DOGS**  
Choreography Workshop p31



*Sup Ch Argowan The Sassenach and Sup Ch, Am Gr Ch, Can Ch Shortblak With One – owned by Stacey Sullivan*

## **‘OUR DOGS HAVE NEVER LOOKED BETTER, THE RESULTS FROM FEEDING ROYAL CANIN SPEAK FOR THEMSELVES’**

*Shortblak Scottish Terriers have been breeding Scottish Terriers for over 8 years, to which they have bred Australia’s No1 Scottish Terrier - 2014, ’15, ’16, ’17, 19.*

‘Our dogs can be fussy eaters but always empty bowls on Royal Canin as they clearly find it very palatable. Scottish Terriers being a coated breed, coat and skin condition is very important, conditioned on Show Beauty our Scotties coats have been never better. Being terriers Scotties are always on the move but they never lose condition’ Stacey Sullivan from Shortblak Scottish Terriers says. ‘All our babies are given the right start in life with the Royal Canin Starter Mousse and they always absolutely thrive on this food growing into strong healthy puppies’.

**[breeders.royalcanin.com.au](https://breeders.royalcanin.com.au)**

- 4 | President's Message
- 7 | Board Notes
- 8 | Dogs Queensland Election Notice
- 10 | Breed Feature  
– Australian Shepherd
- 15 | Another Puppy Farm Vetoed
- 17 | Gold Coast Kennel Club And Beenleigh &  
District Kennel Club Inc Shows  
– In Review
- 22 | Canine Herpesvirus
- 24 | Workin' Sally
- 26 | Tick Paralysis And Treatment
- 29 | Social Media Update
- 31 | Dances With Dogs  
– Choreography Workshop
- 32 | Puppy Scams And Breeder Identity Theft
- 34 | 2023 Annual Dog Sport  
Presentation Evening
- 35 | Dog World Magazine Archives
- 36 | Christmas Gifts
- 38 | Show And Trial Gazette
- 41 | Affiliated Clubs And Services
- 45 | Durack Vendors
- 46 | Rates Guide

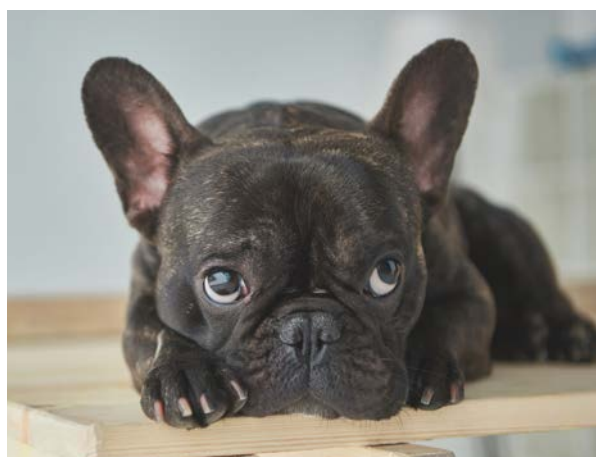
10



31



32



## Office Address

247 King Avenue, Durack, Queensland 4077

## Office Telephone

(07) 3252 2661

## Office Email

[info@dogsqueensland.org.au](mailto:info@dogsqueensland.org.au)

## Website

[www.dogsqueensland.org.au](http://www.dogsqueensland.org.au)

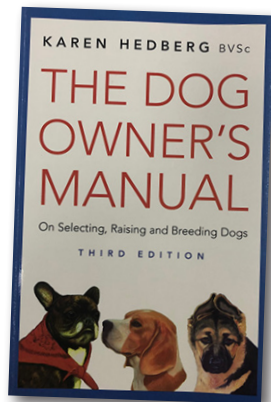
## Postal Address

PO Box 1136, Mt Ommaney, Queensland 4074

ABN 45 160 285 192

## DOG OWNER'S MANUAL ON SALE NOW!

Written by distinguished veterinarian Karen Hedberg, the Dog Owner's Manual takes you through the process of choosing and raising a puppy. It also includes breeding, geriatric care, lists canine ailments and summarises various treatments.



Clearly written and easy to comprehend, this book provides an up-to-date one-stop reference for both breeders and all those who really care for their dogs.

To purchase your copy, visit Dogs Queensland, phone the office on 3252 2661 or email [pina@dogsqueensland.org.au](mailto:pina@dogsqueensland.org.au). The Dog Owner's Manual is priced at only \$50.00 plus postage.

## President's Message

“October was a busy month in our dog world on a number of fronts. Unfortunately, weather did impact on a number of events throughout Queensland. Our hearts go out to those impacted by the recent floods in NSW and Victoria.

Whilst many of our events did continue it did bring the need for an undercover facility at our Durack Sportsgrounds to the front of mind with many members. We asked for feedback on this subject in my July PM. Although there was not a great deal of formal feedback, informally many are saying that such a facility is well overdue. With 3 profitable years the timing may be just right for progressing a review of the preliminary plans from 2014 and looking at developing fresh plans and options for consultation with members. The Board is looking to have a Board meeting in December devoted solely to discussing this initiative and the best way to proceed regarding further fundraising, including fundraising shows, possible government grants and how to achieve the best possible outcomes with this process.

Initially the Board approved a fundraising show on 17 December 2022 so do mark your diaries! It should be a great weekend so close to Christmas. The schedule will follow shortly via Paw Prints and Social Media.

So, if you have expertise that would be relevant to any of these processes, please have a chat to Rob Harrison or a director about having input. It is a great way to give back something to our dog world in a practical way.

# dogs<sup>®</sup>

QUEENSLAND

## DOGS QUEENSLAND SHOP

We now stock Royal Canin and Eukanuba products specific for breeding bitches, puppies and adult dogs.

Also available is a range of high quality shampoos, conditioners and grooming products from Plush Puppy.

Shop hours are:  
Monday to Friday 8.00am – 5.00pm



## Australian National Kennel Council Ltd (ANKC Ltd) “Dogs Australia” AGM

For the first time in a couple of years we had a very productive face to face meeting of the Administrators and also the Directors in Sydney. The Administrators met on Friday 14 October 2022 with the Board and AGM the following day. With our national body, members would be aware that each of our State and Territory dog bodies nominate executive members to the Board. For Dogs Queensland it is Mrs Barb Murfet and I. Barb’s expert knowledge of our dog sports is highly valued at our meetings.

Both meetings were very productive and a great opportunity to discuss and compare notes at formal and informal sessions on key issues affecting our dog world. The Executive was elected at the AGM with Mr Hugh Gent continuing as President, Ms Pamela Campbell from WA elected as Vice President, Mr David Sales from Tasmania continuing as Treasurer, and I was re-elected as a member of the Executive.

It was a reasonably full agenda, and I will provide information about a number of the key matters discussed and resolved at the Board meeting once the minutes have been finalised.

I think that it is so important that we get our messages out to the wider public about dealing with reputable breeders and also the array of dog events available across the country on any given weekend. We are looking to have a higher level of cooperation between our media people across the country with more coordination of targeted campaigns and associated press releases. It is all about increasing our profile with the wider community and also with government and other interest groups. If you have a media background and would like to add to our current resources do let us know.

The next ANKC Ltd meeting is in February 2023 with agenda items to be submitted in December 2022.

Members would be aware that the ANKC Ltd is an Associate Member of the European Federation Cynologique Internationale (the FCI). This membership provides a number of benefits and underpins our staging of FCI Shows. The FCI has various committees. Most recently the FCI



Committee for Dog Welfare and Health issued 2 worthwhile publications. One on “What Does Responsible Breeding Mean?” and the other on “Why Choose A Registered Breeder”. Links to these articles are provided below:

[“What Does Responsible Breeding Mean?”](#)  
[“Why Choose A Registered Breeder?”](#)

### Melbourne Cup Show

Lastly, a bouquet to Maree Kennel Club running the Melbourne Cup Show next week. It is always a fun event and I expect it will be well supported this year too.

And do look out for the schedules for the pre and post-Christmas Shows. They should all be fabulous!

Stay safe and enjoy your dogs. ”  
*Ulla Greenwood,*  
*President, Dogs Queensland*  
26 October 2022



Come join us for the

# *festive* fiesta

**FOUR CHAMPIONSHIP SHOWS  
ONE OPEN SHOW**

**Date:** Thursday 29 December 2022 to  
Sunday 1 January 2023

**Venue:** Dogs Queensland Sports Grounds  
247 King Avenue, Durack

**Conducted  
by the Kennel  
Association of  
Queensland  
and Dogs  
Queensland**



**ENQUIRIES AND  
SHOW DAYS:**

**Jodie Wilshier  
0417 799 115 and  
Ainslie Carius  
0409 892 248**

**EARLY BIRD ENTRIES CLOSE PRIOR 1 DECEMBER 2022**

# Board Notes – November 2022

---

## **APPROVAL OF 2022 NATIONAL SHOW/ RESTRICTED TRIAL – NORTHERN DISTRICTS ROTTWEILER CLUB OF NSW**

Dogs Australia wish to advise the National/ Restricted Trial which was to be held by the Northern Districts Rottweiler Club of NSW Inc on 15 to 18 April 2022 has been rescheduled to take place on 7 to 10 April 2023 at the same venue – the CNCC Grounds, Hillsborough Road, Hillsborough, New South Wales. The Royal Agricultural Society of NSW has confirmed these dates will not clash with the breed judging at the 2023 Sydney Royal Show.

## **APPROVAL OF 2023 NATIONAL SHOW/ RESTRICTED TRIALS – GOLDEN RETRIEVER CLUB OF VICTORIA INC**

Dogs Australia is pleased to advise the approval of the 2023 National Show with Restricted Obedience Trial and Restricted Retrieving Ability Test for Gundog Trial application received from the Golden Retriever Club of Victoria Inc via Dogs Victoria to be held on 6 to 9 October 2023 at KCC Park, Skye, Victoria.

## **APPROVAL OF 2023 NATIONAL UTILITY GUNDOG FIELD TRIAL CHAMPIONSHIP**

Dogs Queensland is pleased to advise the approval of the 2023 National Utility Gundog Field Trial application received from Dogs Victoria to be held on 25 and 26 June 2023 at a location in the Gippsland area yet to be determined. Members will be advised when the location has been confirmed.

## **APPROVAL OF 2024 NATIONAL DANCES WITH DOGS COMPETITION AND TRICK DOG TEST**

Dogs Australia is pleased to advise the approval of the 2024 National Dances with Dogs Championship to be held on 29 June 2024 and National Trick Dog Test to be held on 30 June 2024 at the Dogs Queensland Sports Grounds, 247 King Avenue, Durack, Queensland.

## **APPROVAL OF 2024 NATIONAL RETRIEVING TRIAL APPLICATION**

Dogs Australia is pleased to advise the approval of the 2024 National Retrieving Trial application received from Dogs Victoria to be held on 20 to 22

September 2024 at a Gippsland location yet to be determined. Members will be advised when the location has been confirmed.

## **ZONE 2 AND 3 ZOOM MEETING**

The Board is pleased to announce the latest round of Zonal Zoom Meetings to be held on Monday 21 November 2022.

The Zone 2 Meeting will be at 6pm, Zone 3 will be at 7pm.

There will be an email going to all Clubs in those Zones shortly but if any Clubs have any initial Agenda Items, please forward to [rob@dogsqueensland.org.au](mailto:rob@dogsqueensland.org.au)

## **DOG SPORTS PRESIDENTS, SECRETARIES AND TREASURERS MEETING**

All Sporting and other Clubs conducting sporting events are reminded the Dog Sports President's, Secretaries and Treasurer's Meeting will be held on 20 November 2022 at Dogs Queensland Sports Grounds, Durack at 2pm.

All agenda items are to be sent to Rob Harrison [rob@dogsqueensland.org.au](mailto:rob@dogsqueensland.org.au) with Coral and Trevor [pethers@claremontresort.net.au](mailto:pethers@claremontresort.net.au) cc'd in and received no later than 14 November 2022.

Attendance can be in person or via Zoom.

## **NEW ENTRANTS – CONFORMATION JUDGES TRAINING SCHEME**

Applications close on 30 November 2022 for new entrants to apply to enter the Conformation Judges Training Scheme, with lectures commencing in February 2023.

The examination will be conducted on Thursday 13 July 2023.

Please read the Rules and Regulations for the Conformation Judges Training Scheme on the Dogs Queensland website located under "Judges".

New entrants must ensure they meet the requirements prior to applying to enter the Judges Training Scheme.





## CANINE CONTROL COUNCIL (QUEENSLAND) LIMITED (DOGS QUEENSLAND) 2023 ELECTION NOTICE

1<sup>st</sup> September 2022

Dear Member,

Vero Voting has been contracted by Canine Control Council (Qld) Limited to conduct an election for Six (6) Directors. Nominations open Friday 11th November 2022, and close at 5pm AEST on Friday 9th December 2022.

### Background

Vero Voting, an independent voting service, has been engaged to manage your Nominations and Election. Vero Voting have been appointed by Canine Control Council (Queensland) Limited to protect your privacy and ensure a fair and equitable vote result. All votes submitted will be confidential and anonymous.

The Six (6) Retiring Board Directors are:

- Mrs Ulla Greenwood – Zone 1
- Mrs Barbara Murfet – Zone 1
- Miss Ainslie Carius – Zone 1
- Ms Patrice Johansen – Zone 1
- Mr Gordon Mayne – Zone 3
- Mrs Marg Norton – Zone 2

Please note, subject to compliance with clause 27.5 of the Canine Control Council (Qld) Limited Constitution, retiring Board Directors will be eligible for re-election. The qualifications required to hold Office as a Director are listed within the Canine Control Council (Qld) Limited Constitution, which is available on the Dogs Queensland website or is available by request from the Dogs Queensland Office.

### Next Steps

Step 1: Complete a nomination form along with the candidate statement/ résumé.

Step 2: Lodge the completed form as per the instructions below.

**NOMINATIONS**, which can be made from Friday 11th November 2022 must be in writing and comply with the constitution. In accordance with 29.3 of the Constitution, nominations shall be in writing, and signed by the nominee and two (2) other members supporting the nomination, and shall include class of membership, status, place of residence and a brief résumé by the nominee. Nominations must reach Greg Mitchell from Vero Voting by no later than 5pm AEST, Friday 9th December 2022.

**NOMINATION FORMS** may be downloaded from the Dogs Queensland website or by contacting the Returning Officer from 10th October 2022.

**CANDIDATE/NOMINEE RESUME:** Candidates may submit a résumé not exceeding 200 words and a profile picture, which will be distributed to members, if a ballot is required. This should be submitted with the Nomination form. To ensure accuracy of your information it is strongly recommended that you submit the statement and picture in an electronic format (Microsoft Word & JPEG) to the Returning Officer at email: [greg@verovoting.com.au](mailto:greg@verovoting.com.au). These details should also be forwarded to the Dogs Queensland Office



to allow the résumés and photos of all nominees to be prepared for publication on Monday 12th December, 2022.

## FUTHER REQUIREMENTS

Candidates are asked to note that prior to any appointment at the March 2023 AGM, all potential Directors must have a **Director ID number**. The fastest and easiest way to do this is to apply apply online with your phone via the myGovID app. Candidates must also have a valid **Blue Card** at the time of nomination, details of how to apply are provided on the attached 'Applying for Blue Card Sheet'

## HOW TO LODGE NOMINATIONS

**By email:** A properly completed nomination form including all necessary signatures and attachments may be scanned and submitted as a pdf file to [greg@verovoting.com.au](mailto:greg@verovoting.com.au)

**By post:** Vero Voting, Unit 5, 100 Railway Road, Daglish, WA 6008

**BALLOT:** If a ballot is necessary, voting will be conducted primarily using Internet Voting. Instruction Sheet/Password Advices will be emailed to the email address listed with Dogs Queensland. However, for those members who wish to cast their vote via Postal Voting, other than those without a listed email address, will need to contact the Secretary of Dogs Queensland, before the close of Nominations (5pm AEST 9th December, 2022), to request a Postal Voting pack be mailed to your Postal Address. Similarly, if you have not previously provided your email address and you wish to vote via the internet, you can also notify the Dogs Queensland Office no later than 5pm AEST 9th December 2022.

The ballot will open on Friday 20th January 2023, and close at 5:00pm AEST on Monday, 20th February 2023.

**How Internet Voting Works:** Just prior to the Ballot opening, you will receive communication from Vero Voting. You will be given a unique login that is linked to your membership. Once logged into the voting portal you can following the on-screen instructions to lodge your vote.

Should you require any assistance please contact Greg Mitchell (Returning Officer) on 1300 702 898 or [greg@verovoting.com.au](mailto:greg@verovoting.com.au).

Yours faithfully,



Mr Greg Mitchell  
Independent Returning Officer



Vero Engagement & Voting Solutions Pty Ltd

T: 1300 702 898

E: [greg@verovoting.com.au](mailto:greg@verovoting.com.au)

USEFUL LINKS:

[NOMINATION FORM](#)

[APPLYING FOR A BLUE CARD](#)

# AUSTRALIAN SHEPHERD



Edwina Bevk

*The Australian Shepherd while calm and confident when grown, is extremely energetic, agile and very active, and as a highly intelligent working dog, obedience training and socialisation is a necessity.*

– *Donna Puttock, Maisilva Australian Shepherds*

## **HISTORY**

The Australian Shepherd is a livestock working breed and while he carries “Australian” in his name he was developed in America. One of the reasons noted for him being named Australian Shepherd, is that his early ancestors can be traced back to dogs that worked sheep on the west coast of America, with many of those sheep being brought from Australia. Basque Shepherd Dogs on the west coast were known to have “little blue dogs with bob tails” in the late 1800’s and early 1900’s. Sheep were imported from France, Spain, England, New Zealand, and Australia along with shepherds and their dogs. In the western United States, the Basque Shepherd Dog and his little blue dogs came to represent shepherding as much as the Scotsman and his Collie in Britain.

The Australian Shepherd Club of America was established in 1957, with the breed being officially recognised by the American Kennel Club in 1991. Australian Shepherds were introduced into Australia in the early 1990’s, and received Australian National Kennel Council recognition on the 1 January 1994. It is now one of the largest breeds in the Conformation Working Dog Group.

## **FORM**

The Australian Shepherd is a well-balanced dog of medium size and bone. He should give the impression of being agile, alert and well-toned, both at rest and in motion. He is attentive and animated, showing strength and stamina combined with unusual agility. Slightly longer than tall, the Australian Shepherd is not a square breed. His gait is smooth, free and easily shows agility and efficiency of movement.

A strong emphasis is placed on the appearance of moderation and balance in all aspects of this breed. The very purpose of the Australian Shepherd as a working stock-dog (sheep, cattle and Bison etc) requires fast reflexes, agility and endurance to accomplish its task. The preferred height for males is 20-23 inches and for females 18-21 inches.

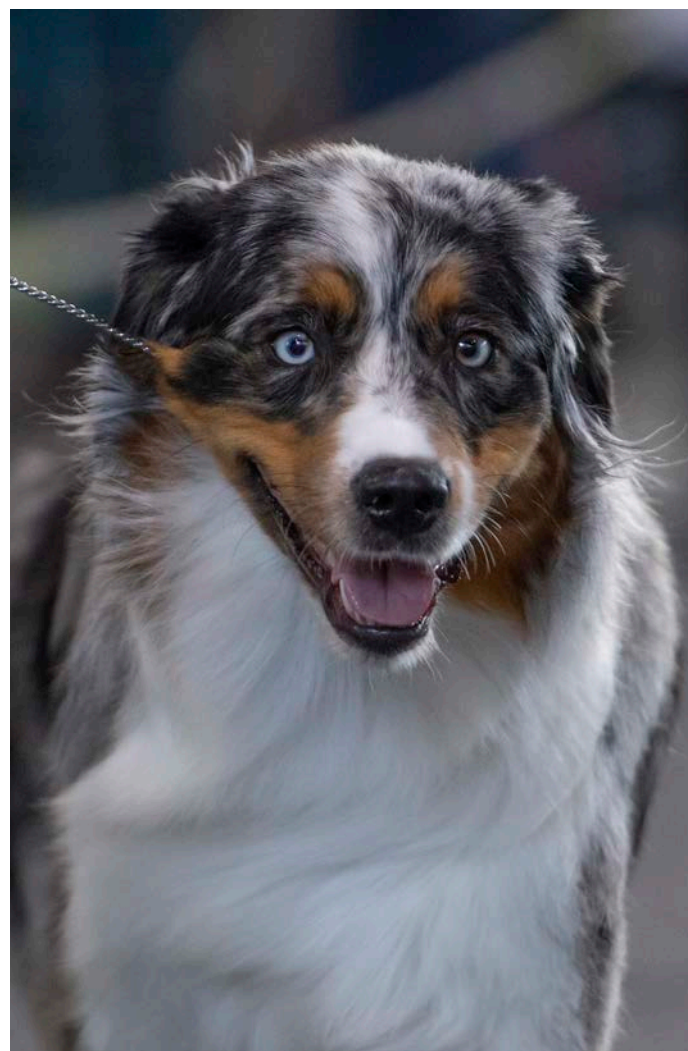
## **TEMPERAMENT AND COMPANIONABILITY**

Australian Shepherds have been used for many purposes. Their use with livestock demands a

natural worker who is highly intelligent and easy to train. They are very companionable and need to be a part of the family – always with you, near you or touching you. If you want to own this breed get used to not being able to move, when sitting in a chair or in the study working as you will always have a dog behind or entwined around your feet.

The Australian Shepherd while calm and confident when grown, is extremely energetic, agile and very active, and as a highly intelligent working dog, obedience training and socialisation is a necessity. Not only will training improve your relationship with your dog it is critical in this breed as they can have a tendency to be reserved with strangers. This does not mean shy or aggressive but simply that they are unconcerned. It is therefore, very important that the Australian Shepherd is well socialised as a puppy.

Their devotion to their owners made them the ideal family farm dog with guarding instincts. These guarding instincts mean that Aussies can be extremely vocal and often alert to the presence



Shadow's Farm Photography



of unknown noises or strangers. They need a great deal of mental stimulation and exercise to ensure they do not become destructive or bark excessively.

I would not recommend them as outside only dogs or kennel dogs – as Aussies they get bored easily and will alert bark. The larger the pack the more they will feed off each other with the barking especially if left to their own devices. Keeping your Aussie's mind active is key to a happy life.

Being agile, athletic with excellent endurance, when grown they will be able to trek long distances with you. They will fetch a ball or toy all day and love nothing more than to carry a toy in their mouth and get butt rubs from you – sharing their “prize” with their family. They will grin, or smile at you, make you laugh with their antics, and after a day of fun happily share your heart and home.

### FUNCTION

Today Aussies are used in many and varied ways including Search and Rescue, various scent detection work as well as hearing and handicap work. The original purpose of the breed as a working stock dog is still maintained across America on ranches and farms as well as through competition at stock dog trials.

In Australia, Aussies are in high demand due to their versatility and also their attractive appearance. They are extremely intelligent, and they love to please their humans. In this aspect Aussies are very demanding of time and attention and want to be with you all the time.

Aussies excel at many sports due to their versatility including Obedience, Rally, Agility, Herding, Endurance, Backpacking, Tricks – in fact you can pretty much train an Australian Shepherd to do anything as he just wants to be with you and works to please.

A new sport in Australia in which Aussies are performing extremely well is Scent Work. They make excellent workers and love this new game of finding the odour. For those who want to live a more sedentary life but still want to own an Aussie this sport is less demanding than walking at least five kilometres a day, as Scent Work is challenging to the mind of the dog, and therefore gives them activity and brain work.



### **COAT AND GROOMING**

The Australian Shepherd has a coat of moderate length and coarseness with colouring that offers variety and individuality in each dog. The only recognized colours are blue merle, red merle, black, and red. Blue merles and blacks have black noses and eye rims while red merles and reds have liver (brown) noses and eye rims. All colours may be with or without white and/or copper trim.

A particular point to note is that the Australian Shepherd can have any colour eyes, which means a black tri-colour or a red-tri-colour or red merle Australian Shepherd can have blue eyes, or one blue eye and one brown eye. The combinations are many and varied.

Australian Shepherds have a double coat, and they do shed. They need to be brushed at least twice a week to ensure their coat does not get knotted, and washed and groomed every four to five weeks to maintain their coat condition. Grooming from an early age is a must for them to get use to this. Lack of grooming and or socialisation will create issues

in the long run, both in the health and wellbeing of the dog. Toenails should be trimmed at least fortnightly to prevent the nails becoming too long and the feet splaying.

### **TAIL**

Australian Shepherds are a natural bob tail breed, which means that they can be born with tails varying from short (one digit) to long tail (full tail) and all the numbers of digits in-between. This includes quarter tails, half tails and three quarter tails.

The percentages of tailed to natural bob tails does vary in each litter (simple random autosomal genetics); however it is always likely that there will be both tails, and shorter tails or natural bob tails in each litter. The likelihood of very short tails (single digits) is lower. It must be noted that tail docking in Australia has been banned since 2004 so it is now very common to see Australian Shepherds with tails and half tails in the general public. Most puppy people prefer Australian Shepherds with tails.





It saddens me that so few tailed Australian Shepherds are being exhibited in the conformation ring. The evidence points to the fact that conformation breeders are only keeping for showing the pick of the natural bob tails and not the pick of the litter, and while at times this might be the same, invariably it is not. One reason is due to the fact that the Australian Shepherd Standard for Australia has not been changed under the General Appearance section to reflect the tails are a natural part of this breed. In fact, as breeders we need tails to continue the breed, as breeding natural bob tail to natural bob tail will inevitably produce problems such as spinal deformities and small litter sizes amongst other things. Once the judges get used to the Australian Shepherds beautiful tail (and it truly is beautiful) then perhaps the status quo will change, but currently many Australian Judges will not look at Australian Shepherds with tails thereby perpetuating the problem.

### HEALTH

The Australian Shepherd is generally a very healthy breed and can live to an average of 12-15 years. Responsible breeders do extensive health testing to ensure the breed remains as healthy as possible for generations to come.

Some of the main concerns in Australian Shepherds are Hereditary Cataracts (HSF4) and all owners need to be aware of the sensitivities of the Multi Drug Resistance (MDR1) mutation. Hip and Elbow scoring is widely conducted, the breed average is currently 6. Extensive research is being conducted through the Australian Shepherd Health and Genetics Institute in the US, which helps breeders monitor and assess where and what they need to be health testing. The Institute also offers guidance for those that do not currently have tests available.

### SUITABILITY

The Australian Shepherd is a loyal and energetic companion, with herding traits. The breed is recommended for active families who enjoy outdoor activities, or providing mental stimulation for their dog. They are a great sporting breed, and a joy to own, as when well trained they truly become a wonderful member of the family.

Australian Shepherds live a long time. This is a huge commitment that will last 10 to 15 years or more. If you are prepared to put the work into their socialisation and upbringing they are the breed for you and you will be rewarded with a loyal and devoted family member.

## ANOTHER PUPPY FARM VETOED

– David Margan

The Bundaberg Regional Council has unanimously rejected an application for the expansion of a large-scale puppy farm at Wallaville.

The farm, Kanche Kennels has been breeding Chihuahuas.

The Council had received over 3000 objections to the application mainly raising issues of animal welfare, but it wasn't rejected by Council town planning officers due to the substance of such objections as that is still not a concern to be assessed under the Queensland Town Planning Act.

Instead, it was noise complaints that drove the council officer's advice.

Whether the Bundaberg councilors also voted the application down out of animal welfare concerns is not known.

Either way, it is a great result.

As one major opponent to the development application, the Animal Welfare League, stated in their submission; "It was clear that animal welfare was not a priority for the applicant with most of the dogs being kept in outdoor pens with limited shelter in all weather conditions, with little exercise or enrichment."

Kanche Kennels declined to comment on the council decision and their Facebook page is closed. They have 20 days to lodge an appeal.

Both Western Australia and Victoria have now banned 'puppy farms' and its about time Queensland followed suit.

Not only is this industry a huge danger to animal welfare and consumer interests but they by inference devalue the reputation of our professional breeders.

As for the application for a 'puppy farm' that sits before the Scenic Rim Council, that we have written about in the past, council is yet to make a decision with council officers seeking more information about potential 'noise' hazards.

We have alerted all the Scenic Rim Councillors about the decision of Bundaberg Council and will keep you posted.

Animales  
online

Use Code  
LoveDogs10  
for 10% Discount  
on your first  
order with us.

For people  
who love Dogs:  
More than 110 different  
breeds available!

### Australian Shepherd

Necklaces, Charms, Rings,  
Earrings, Pins and more...

from \$ 79

Original  
Dazzling Paws Jewelry  
Hand-crafted from  
.925 recycled  
Sterling Silver



\*Free Shipping Australia wide

Because we love our animals

[www.animales.com.au](http://www.animales.com.au)

phone: 0478 709 054

Petcover®



**Protect your Best  
in Show, with an  
Award-winning Pet  
Insurance provider.**

#### Cover options:

- ✓ Eligible veterinary fees
- ✓ Advertising & rewards
- ✓ Theft or straying
- ✓ Alternative treatment

[petcovergroup.com/au](http://petcovergroup.com/au) | 1300 731 324

\*Terms and Conditions apply. Cover subject to eligibility criteria, excludes pre-existing conditions, excesses and waiting periods apply. Please consider the PDS and TMD available on product page of website, before deciding to purchase the product. Issued by HDI Global Specialty SE – Australia (AFSL No. 458776).

# Dogs Queensland Show Bag/Puppy Packs

## Now Only \$15

Dogs Queensland have additional stocks of Show Bags for sale. Priced at the reduced price of only \$15.00 (plus postage), these bags make perfect Puppy Packs.

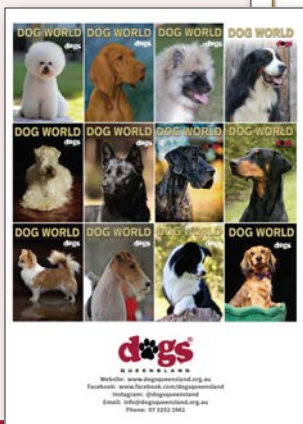
Each value-packed bag contains:

- Nexgard Spectra Tick, Flea and Worm Chewable (size to suit your dog)
- Plush Puppy 100ml O.M.G Multi Purpose Grooming Spray
- Royal Canin Educ Nutritional Supplement 50g
- EAC Animal Care Pre-biotic 20g • Dog Toy – one only
- Hair Remover or Royal Canin Spray Bottle Dogs Queensland
- Dogs Queensland Water Bottle • Dogs Queensland Calendar and Carry Bag

To purchase a bag simply visit the Office at Durack from 8am to 5pm Monday to Friday or alternatively email Pina at [pina@dogsqueensland.org.au](mailto:pina@dogsqueensland.org.au).



## Dogs Queensland Calendars Reduced To \$5 Each



Dogs Queensland has excess 2023 Calendar stock featuring dog breeds showcased on the Dog World magazine covers.

The calendars have been reduced in price to only \$5.00 each (postage additional if required) and can be purchased from the Dogs Queensland Office at Durack from 8am to 5pm Monday to Friday or by emailing Pina at [pina@dogsqueensland.org.au](mailto:pina@dogsqueensland.org.au).

## DOGS QUEENSLAND LOVES DOG TALES

Members are invited to submit dog related stories of interest for inclusion in upcoming issues of our Dog World magazine.

All canine topics are accepted whether they be unusual, quirky or factual and can include 'paw-friendly' walks and cafes, heart-warming tales or antics while in lockdown to name a few.

Dogs Queensland would like to showcase your dog's story to the wider canine community. To see your story published simply send it through to [barbara@dogsqueensland.org.au](mailto:barbara@dogsqueensland.org.au)





# *Caboolture Kennel Club and Dogs Queensland Championship Shows*



Dogs Queensland congratulates all the winners and Members who took to the Show Rings to exhibit their dogs in the Caboolture Kennel Club and Dogs Queensland Championship Shows held at Durack.

Thank you to all those who made the Shows a success including exhibitors, workers and volunteers alike.

The following pages showcase a selection of images taken during the Shows and can be purchased from <https://takphotography.com.au/dog-shows/>



# Show 1



**BEST IN SHOW – GERMAN SHORTHAIRED POINTER:  
CH. TEALPOINT GAME SET N MATCH (A1) ET RN TSDX**



**RUNNER UP IN SHOW – PAPILLON:  
SUP. CH. BIRIKINO VICTORY DANCE**



**PUPPY IN SHOW – HUNGARIAN VIZSLA:  
CH. ELETTERS INSURGENT**



**INTERMEDIATE IN SHOW – SWEDISH VALLHUND:  
CH. TRENDAM LIKE TOY SOLDIERS**



**AUSTRALIAN BREED IN SHOW – CHIHUAHUA (LONG):  
SUP. CH. WACHOWA OO SEVEN**



**NEUTER IN SHOW – AFGHAN HOUND: CH. NEUTER  
GR. CH. CHAKDARRA HOLLY GO LIGHTLY (IMP NZ)**



*Show 2*



*BEST IN SHOW - PUG:  
CH. KABOVA LUCKY STRIKE*



*MINOR IN SHOW - BEAGLE:  
BALDEV KILLER QUEEN*



*PUPPY IN SHOW - POMERANIAN  
CH. ZEIGEN THE EYE OF THE TIGER*



*JUNIOR IN SHOW - BERNESE MOUNTAIN DOG:  
CH. POLISHDREAM DEVIL WEARS PRADA*



*AUSTRALIAN BREED IN SHOW - CHIHUAHUA (LONG):  
SUP. CH. WACHOWA OO SEVEN*



*RUNNER UP NEUTER IN SHOW - SHETLAND SHEEPDOG  
CH. NEUT. CH. PEERIELEE COLOURS ON THE WIND*



## Show 3



*BEST IN SHOW – SCOTTISH TERRIER:  
CH. UPYRKILT WHERE THERE IS A WILL*



*RUNNER UP IN SHOW – CAVALIER KING CHARLES  
SPANIEL: CH. MATMOR POMP AND CEREMONY (AI)*



*BABY IN SHOW – FRENCH BULLDOG:  
BEUNYQUE HE IS THE WIZARD*



*JUNIOR IN SHOW – SHIH TZU:  
CH. OESHIH LETS GET READY TO RUMBLE*



*INTERMEDIATE IN SHOW – PUG:  
CH. KABOVA LUCKY STRIKE*



*BEST NEUTER IN SHOW – KEESHOND  
SUP. CH. CALVALE KATCH ME IF U KAN ET*



# in-sideout

gut & immune health optimiser

*“Pawsome”  
health  
starts with  
in-sideout*



Contains pre  
& probiotics



Optimises gut  
health & digestion



Supports immune  
system



Supports healthy  
skin & coat



Non GMO, no artificial  
colours & preservatives



Backed by science

# Canine Herpesvirus

Canine herpesvirus (CaHV-1), commonly referred to as fading puppy syndrome, is a systemic, often fatal disease. The virus is a well known cause of fatal hepatic and renal necrosis in neonatal and newborn puppies. CaHV-1 infection during pregnancy can lead to embryonic resorption, abortion and stillbirth.

Onset is sudden. The timeframe from infection to showing symptoms is four to six days. In puppies, clinical signs include difficulty breathing, thick nasal discharge, failure to suckle, greyish-yellow or green soft odourless stools, persistent crying, signs of haemorrhage (red spots) on the gums and seizures. For puppies less than two to three weeks of age, in most cases, the consequences will be fatal with death usually occurring within 24 -36 hours. Temperature may potentially be a contributing factor in reducing losses in litters which have been exposed. Unfortunately, treatment in severely affected puppies is rarely successful and there is almost a 100% mortality rate.

In some cases, puppies may develop only mild symptoms and survive. However, even in less severe cases, they can still subsequently develop ocular disease which may result in blindness and serious neurological issues.

Although CaHV-1 primarily has serious adverse effects upon unborn litters and newborn puppies,

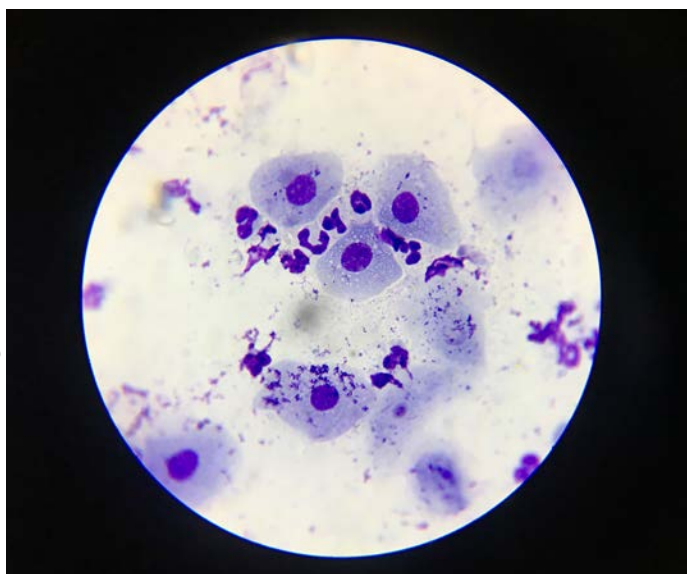


Image: Dr Hannah Holm BVSc, Central Veterinary Surgery, Mareeba

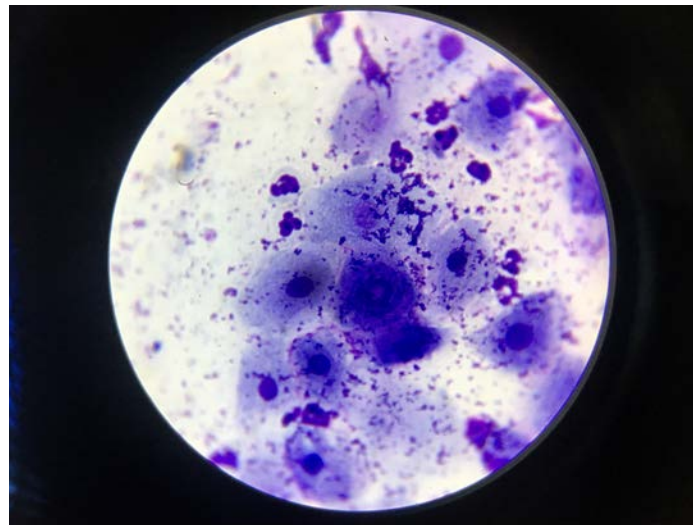


Image: Dr Hannah Holm BVSc, Central Veterinary Surgery, Mareeba

***Vaginal cytology from a case of an aborted litter at 6 weeks gestation.***

it can also have serious effects in older dogs. There are documented cases of systemic infection in immunocompetent adult dogs. Signs of infection may include oculonasal discharge as well as vomiting, diarrhea and decreased appetite, weakness and lethargy. In severely affected cases, the outcome may be fatal.

Further, in higher density dog populations such as kennel environments, CaHV-1 can also contribute to kennel cough. It has also been documented that CaHV-1 can induce ocular disease in both immature and adult dogs.

CaHV-1 does not only infect breeding animals. Transmission does occur by sexual contact but also commonly occurs through normal licking, sniffing, and nose to nose contact. Dogs may carry the virus but show no symptoms. Accordingly, it is quite likely that the disease may be far more prevalent in the wider canine community.

At highest risk are young females (who have not previously been exposed) and their unborn/newborn puppies. Puppies can be infected in utero through exposure to infected secretions or through postnatal exposure.

In the case of a breeding female which has previously been exposed to the virus, puppies should receive antibodies through colostrum from the mother and, provided that this is effective, may be resistant to infection. It is therefore possible for previously infected females to have normal subsequent litters. However, in other cases, a female may not be able to successfully produce litters.

Clearly, canine herpesvirus is a virus with serious ramifications for our breeding programs. As a breeder, what should you be doing? As always, prevention

is better than cure. As the virus is primarily spread by aerosol respiratory droplets and direct contact with nasal secretions, pregnant females should be kept isolated from other dogs, including those in the household/kennel, throughout pregnancy. The dam and puppies should also be kept separate from other dogs for at least the first three weeks following birth.

Good hygiene is also important and common disinfectants are effective in destroying the virus. Care and good hand hygiene should be exercised by anyone handling the mother and her puppies. The whelping area should be kept clean and disinfected regularly.

Although a vaccine has been developed, the benefits are still being evaluated. At this stage, the vaccine is only approved and available for use in Europe. Currently, there is no vaccine available in Australia or the United States of America.


A research group from the College of Public Health, Medical and Veterinary Sciences at James Cook University is currently conducting a study to investigate the prevalence of canine herpes in the dog population. Sampling includes both the breeding population and the wider canine community. There has been no previous such study in Australia to date. The intention is that this study will provide data on the prevalence of this disease in both the breeding population as well as the wider community which may then assist with better informed decisions within the veterinary community and potentially assist with availability of a vaccine in Australia.

Dogs Queensland is committed to making a positive contribution towards canine health and this research is being conducted with the assistance of funding by Dogs Queensland.

In order for this research study to achieve a meaningful result, it is important that there is a sufficient sample size. Vets from this research group have recently attended some of our Zone 3 shows with the support of Dogs Queensland in order to collect blood samples. Sampling is a simple procedure with no clipping involved. Members have demonstrated their willingness to participate and are encouraged to continue to support this research by volunteering their dogs to participate in this valuable study for the benefit of our dog world.

**Elisa McCutcheon**  
 Chair, Dogs Queensland Canine Health Committee

*With thanks to Carolynne Joone, Senior Lecturer, Veterinary Reproduction, College of Public Health, Medical and Veterinary Sciences, Division of Tropical Health and Medicine, James Cook University for her assistance in preparation of this article.*



**KALLANGUR**  
 VETERINARY SURGERY  
 REPRODUCTION, MEDICINE & SURGERY

- Transcervical insemination with fresh, chilled and frozen semen.
- Semen collection and freezing.
- In-house progesterone testing - results in 20 minutes.
- Dog and bitch fertility assessment and much more.

**Dr Scott Norman BVSc PhD DACT**  
 Registered specialist - veterinary reproduction

**Dr Jennifer Larsen BV Biol BVSc**

**Ph (07) 3204 4332**  
 1474 Anzac Ave Kallangur 4503



**“HOT FOIL STAMPING SPECIALIST”**

Find us on Facebook **PHONE: ( 02 ) 47741809** Find us on Facebook

**EMAIL: [marellen@marellenshowribbons.com](mailto:marellen@marellenshowribbons.com)**

**ADDRESS: 109 Silverdale Rd Silverdale N.S.W. 2752**

**WEB: [www.marellenshowribbons.com](http://www.marellenshowribbons.com)**

**“FIND US ON FACEBOOK FOR FAST COMMUNICATION”**



# WORKIN' SALLY



– David Margan

Sally Purbrick-Illek is indefatigable.

When I contacted her about doing an article about her scent dog, 'Pepper', helping to find a lost dog, I was flooded with photos and information, not just about 'Pepper,' but her love affair with working dogs.

This woman clearly doesn't waste a second on doing nothing. Her engagement with dog sports is intense, and she has trained and/or competed in Agility, Herding, Flyball, Dances With Dogs, Scent Work, Endurance, Lure Coursing, Tracking, Trick Dog, companions and even dogs that read!

*"I'm a very competitive person who loves dogs, so bingo, dog sports is perfect!"*

And so, Sally and 'Pepper' joined Dogs' Queensland in 2016. *"They had all these different activities you and your dogs could engage in, and their ethos was all about responsible dog ownership and breeding."*

In fact, she didn't even own a dog until 2004 when she arrived in Australia to finally settle down after an adult life travelling the world with a career in international education. Born and raised in Oregon, her Mum was averse to dogs after being bitten by one when she was a child.

But Sally, well Sally was keen about dogs, she even built a pet cemetery in her backyard to deal with dogs she found that had been killed or seriously injured by cars.

Although we didn't have a family dog, the neighbours across the street had a short-haired Dachshund called, 'Peanut' who used to play with Sally and her sisters when they were out in the yard.

*"One day when I was about seven years old, Peanut saw me out in the yard and ran across the street. Unfortunately, a car crossed the street at the same time and hit Peanut. He gamely continued across the street, mortally wounded, and died in my arms."*

*I am shedding a tear right now as I think about this. I believe it was at this point that I decided I wanted to become a vet."*

But the cost of vet training was horrendously expensive and out of the family's reach. So, it was biology, and then further degrees in teaching and school administration before settling down in Australia to work as a university lecturer in science education.

Curiously the dog Sally finally got was a German Shepherd cross rescue dog called 'Lucy', the same breed that had bitten her Mum. Sadly, Lucy passed away at the age of ten from lymphoma, but now Sally has three working dogs.

*"I love working with dogs as they are so empathetic and have seen me through some tough times in my life, including family and health crises."*

Sally found Border Collie cross 'Pepper' when she went to buy a second-hand dog kennel. She was





cowering in a chicken coop. The kennel sellers said she could have the dog if she bought the kennel.

Suffice to say, 'Pepper' is now in fine fettle and a happy member of the family along with another two other working Border Collies, 'Champ' and 'Jazz'.

'Pepper' now does Scent Work, Tracking, Trick Dogs and acts as goalie in the occasional canine soccer game.

As for 'Champ' Sally found him as a four year old on a farm but as a working dog his days were numbered as he had hip dysplasia and back issues. But as we know working dogs love to and need to, work! So, what to do? Plenty it seems.

He's now a duck herder, works in aged care as a companion dog, is involved in programs on how to approach a dog or that help children get over their dog phobia and is also a dog reader.

A dog that reads!!!

Before you say wow too often, what Champ does is sit with children with learning and or reading difficulties, providing a focus of calm improving the child's concentration and performance.

But he does have a favourite book, "Max on a Hill", about a sheep that saves his mates from a fox by rolling down a hill.

Recently 'Pepper' became a local celebrity when she used her scent and tracking training to track a lost Cavoodle puppy on the Gold Coast. The puppy had been missing for 24 hours and even though it had been bucketing down for most of that time, Pepper sensed that the puppy was still in the vicinity and may be found in an adjoining gated community.

Sure enough, the very relieved owner found the puppy struggling in a canal behind the adjoining community, frightened and very wet – she slept for 24 hours. The owner said; "We're so lucky. We didn't know where to look but Pepper did, we're so grateful."

Our dog world has provided Sally with almost everything she enjoys; community service, training, competing and organising training and trials in her current role as president of the Queensland Herding Association. "In joining Dogs Queensland, I got to meet a whole lot of people, I've learnt a great deal and received lots of help from fellow members who have more experience than I, that has made me more knowledgeable, a better competitor, administrator and dog owner."

**WestVETS**  
Small Animal Hospitals  
**07 5464 4422**



*"Experienced vets, professional service, competitive pricing"*

**Canine Reproduction Services**

- ◆ In-house progesterone tests with results within 20 mins
- ◆ Fresh & Frozen Artificial Insemination
- ◆ Pregnancy Ultrasound
- ◆ Semen Collection, Analysis, Chilling and Freezing
- ◆ ANKS/CHEDS Hip & Elbow Scoring

**General Services:**

- ◆ 24/7 After hours Emergency Service
- ◆ In House Diagnostics including:
  - Ultrasonography
  - Digital Radiography
  - On Site Blood Analysis
- ◆ Orthopaedic Surgery (including TTO, TTA & TPLO for Cruciate Repair)

**Discounted Breeder Rates:**

- ◆ Puppy Vaccinations
- ◆ Microchipping
- ◆ Elective Caesarians
- ◆ Afterhours Caesarians



2401 Warrego Hwy, Marburg, QLD 4346  
marburg@westvets.com.au  
[www.westvets.com.au](http://www.westvets.com.au)

## DOGS QUEENSLAND LOVES DOG TALES

Members are invited to submit dog related stories of interest for inclusion in upcoming issues of our Dog World magazine.

All canine topics are accepted whether they be unusual, quirky or factual and can include 'paw-friendly' walks and cafes, heart-warming tales or antics while in lockdown to name a few.

Dogs Queensland would like to showcase your dog's story to the wider canine community. To see your story published simply send it through to [barbara@dogsqueensland.org.au](mailto:barbara@dogsqueensland.org.au)



# Tick paralysis, treatment and prevention

– Dr Mia Reeve-Johnson, Veterinarian WestVETS

Paralysis ticks (*Ixodes Holocyclus*) contain a toxin in their salivary glands which is injected into the host while they feed on the victim's blood. This toxin affects the nervous system (the neuromuscular junction) of the host animal and if left untreated will result in complete paralysis and death. Even when treated with tick antiserum, the effects of the toxin often prevail and require hospitalisation. Otherwise, animals may continue to deteriorate before showing signs of recovery.

Over the past few weeks, we have seen a sharp increase in paralysis tick cases. However, we have had tick cases present in every month of the year and it is a common misconception that “tick season” is Spring and Summer. We will often see an influx of Ticks from late Winter after a little bit of rain.

The signs of tick paralysis can be rather non-specific, including the dog just being ‘off colour’ but the more specific signs include:

- Heavy breathing: tick paralysis patients have a distinct respiratory pattern once it has progressed
- Coughing, retching, grunting
- Vomiting, regurgitation
- Loss of appetite
- Excessive salivation
- Weakness of back legs and/or difficulty walking,
- Collapse
- Strange vocalisation (change in bark or meow).
- Dilated pupils

Paralysis ticks produce an ascending paralysis by way of affecting the longest nerves first. Therefore, hindlimb weakness and laryngeal paralysis tend



to be the first signs before weakness progresses to the forelimbs. Often dogs may present at the clinic for “acute paralysis” however further questioning may reveal lethargy, regurgitation or wobbliness in the previous day(s). There may be a history of tick removal or a missed tick prevention treatment. Tick paralysis is considered in any dog which present at the clinic with weakness, respiratory compromise and regurgitation.

We have multiple people check the dog for ticks and in some cases neither a tick or a crater in the skin is located (in about 10% of tick paralysis cases).

Weakness in the hind limbs may rapidly progress to paralysis if not treated. Symptoms can progressively worsen days after a tick has been removed. If you notice any of these signs in your pets, please phone your veterinarian immediately. Tick paralysis is treatable but timing is paramount.

A tick paralysis grading system is used at veterinary clinics to categorize the severity and the progression of related symptoms.

## TICK SCORE

Gait		Respiration	
1	Mild ataxia / paresis	A	No respiratory compromise
2	Able to stand unaided, But unable to ambulate	B	Mild compromise: Increased respiratory sounds
3	Unable to stand Can right into and maintain sternal recumbency	C	Moderate compromise: Restrictive breathing, gagging, retching
4	Unable to right self and unable to maintain sternal recumbency	D	Severe compromise: Expiratory grunt, dyspnoea, cyanosis

Prognosis of survival is linked to respiratory score and this can change rapidly.

**Any** clinical sign no matter how mild, we recommend treatment immediately, which involves:

- Tick antiserum  
Antiserum will neutralise circulating toxin. What is bound to the neuromuscular junction is permanently bound and is replaced with normal turnover of the receptors. Thus, there is often a lag of 24 hours before any clinical improvement is seen. In the meantime we have to monitor for progression of clinical signs or deterioration.

Owners need to be aware of the risks involved when using tick antiserum, which is a blood product. Although rare, an anaphylactic reaction is possible and there is an increased likelihood of reaction if administered again in the future.

- Sedation
- Fasting until gag returns
- Careful intravenous fluid therapy
- Antinausea medications
- Antibiotics if there is any hint of aspiration pneumonia
- Oxygen therapy or possibly artificial ventilation.
- Positioning; lying them on their chest and frequent turning.
- Eye lubrication.

- Bladder care
- A full-body clip is highly recommended especially in long coated dogs to be performed either under sedation or general anaesthetic to reduce stress induced respiratory compromise
- Application of a tick prevention product

The criteria for discharge from hospital include ability to ambulate normally and eat without regurgitating.

Prognosis is always guarded for all tick cases until they are discharged from hospital and have completely recovered from all clinical signs. Veterinarians frequently face pressure from owners to discharge tick paralysis patients early. Without treatment prognosis is poor. Good monitoring and nursing is vital to recovery, as is good communication with the owner upon discharge. Progression of disease is very unpredictable. **We tend to never give a tick a good prognosis**, as any of the following can happen

- Tick removed from asymptomatic dog and paralysis occurs days later
- Stage 1A paralysis treated, and within 12 hours patient becomes 4C due to aspiration of vomit

Tick patients don't die from ambulatory paralysis. They die from some form of respiratory failure.

**Prevention is better than cure.** Please remember to search your animals daily; this remains the most effective way of preventing ticks but it is also essential to use tick prevention. Ticks love



*An example of the varying sizes of paralysis ticks; often the bigger the tick, the longer it has been on your dog, which is generally when your pet will start to show signs of tick paralysis.*

warm and damp areas on your dog. They are most commonly found around the front end of animals, in ears, around mouth, near eyes and under collars. Even if your dogs spend most of their time indoors they can still fall victim to paralysis ticks and it only takes a short period of time outside for one to latch on and cause problems.

There are many forms of treatment such as spot-ons to apply to the back of the neck, collars and chews. We strongly recommend staying up to date with your monthly or 3 monthly tick prevention, such as Bravecto, Nexgard and Simparica. We suggest clipping your dog's coat in the warmer months, which makes searching for ticks a lot easier. We offer our clients' dogs with 'comfort clips' – your long haired pet will love you for it!

In the last couple of years, we have seen a number of flea and tick treatments enter the market. The new tick products are all of the isoxazoline class so work in a similar manner. Dr. Asher Dessaix at our clinic has noted that they have resulted in a dramatic reduction in the number of tick patients we have seen in recent years and I have no doubt they have saved many lives. The natural question is what is the best one to get? You really can't go wrong, but there are some differences that may sway you from one to another:

Nexgard was the first to enter the market and many clients take advantage of the Nexgard Spectra which is their combination product. Be mindful though that there is no ingredient in Nexgard Spectra which will kill Tapeworm, so this really should be combined with a tapewormer. It is imperative that it is given on time every month, not just because of the heartworm prevention but the

effectiveness for tick control will drop after the month as we have seen in clinical cases. It cannot be used in cats.

Simparica is another monthly chew for ticks. It is actually licensed for 35 days giving a little more peace of mind should you run a little late. This can actually be our cheapest option, we can provide a bonus 3 months of chews if you buy 9 from us throughout the year if your dog is on heartworm injections with us also.

Bravecto is perhaps the most convenient of them all with chews that last 3 months for fleas and ticks for dogs. It is actually licenced for 4 months for paralysis ticks in dogs giving you extra peace of mind should you run a little late. The dog version lasts 6 months!

Many new products which enter the market these days will get some form of bad publicity on social media, which I know deters some owners using these products. These posts often come from countries other than Australia where their paralysis ticks are far less deadly. All these products are regulated and licenced by an independent government body where reporting of adverse events is mandatory. If you have any concerns about the safety of these products and whether they are suitable for your pets, please speak with us.

We are available day and night. Please do not hesitate to call. And remember, ***prevention is always better than cure.***



**WestVETS**

**Small Animal Hospital  
Equine Hospital and Reproduction  
Centre**

**540 Mt Crosby Rd Anstead Q 4070  
Ph 07 3202 7300**

**2401 Warrego Hwy Marburg Q4346  
Ph 07 5464 4422**

[www.westvets.com.au](http://www.westvets.com.au)

# MEDIA UPDATE

– David Margan and Marylu Lloyd

As a measure of how our social media profile is going, we have taken the trouble to compare our social media performance for the quarter, July to October 2022, with the same period for 2021.

Our important Facebook page likes for the 2022 period are up by a whopping 141 percent compared to the same period last year while our Instagram was up by 59 percent with an extra 366 followers this quarter.

While total impressions up by 67 per cent and total engagements were up by 118 per cent for both platforms.

Ekka was the big ticket promotion in August with our video views and posts attached reaching over 5600 people.

Further traction was gained this month

with our President, Ulla Greenwood’s ABC breakfast radio interview about the new residential tenancy laws and how to keep your dog smelling like a rose now the laws have changed.

It was our top Facebook post that month, while our top Instagram post was the Japanese Spitz pups which was the featured breed on the cover of #DogWorld magazine.

And remember, spread the word and hit the ‘like’ button.



**dogs** **f** Dogs Queensland  
Fri 8/5/2022 11:19 am AEST

Only one more sleep till our #showdogs pup paws forward! 🏆🏆🏆 Good luck to the b who've entered around 170 breeds in this y

Impressions	5,820
Reach	5,648
Engagements <b>i</b>	788
Engagement Rate (per Impression)	13.5%

**dogs** **f** Dogs Queensland  
Thu 9/29/2022 9:56 pm PDT

New rental legislation passed by the Queensland Government's in 2021 comes into effect tomorrow Saturday...

<b>Total Engagements</b>	<b>107</b>
Reactions	45
Comments	0
Shares	10
Post Link Clicks	14
Other Post Clicks	38

**dogs** **i** dogsqueensland  
Fri 10/7/2022 4:53 pm AEST

The striking and spirited Japanese Spitz graces the cover of our #DogWorld magazine this month. Developed in Japa...

Impressions	358
Reach	327
Engagements <b>i</b>	36
Engagement Rate (per Impression)	10.1%



# Royal on the Park Hotel & Suites



Wish I  
was there

Come and stay at Brisbane's iconic Royal on the Park Hotel & Suites and enjoy our tranquil retreat in the heart of the CBD for the ultimate getaway - just don't tell your pup!

**Book Now**

**07 3221 3411**

[royalonthepark.com.au](http://royalonthepark.com.au)



152 Alice Street, Brisbane 4000 QLD

# DWD Club Choreography Workshop with Loretta Rabbitt

– Maree Field

Dances with Dogs was recognised by the ANKC as a titling dog sport from January 2009. Since that time, many competitors have enjoyed the fun and challenge of training their dogs, developing and performing Heelwork to Music and/or Freestyle routines, all of course performed to music. Its' popularity is growing, with a number of competitors transitioning from Trick Dog to DWD.

However, a DWD routine is not simply an unrelated series of tricks performed one after the other. It can build on behaviours from the Trick Dog sport, or indeed other sports including Agility as well as Obedience and Rally. The difference is that DWD also requires the handler to select a piece of music and develop a sequence which flows and interprets that music. You actually get to choreograph the routine. It also provides the freedom, challenge and enjoyment of selecting music that best suits the handler and their dog, of creating a theme to their music and selecting a costume which complements the theme and their dog.

Choreographing a routine is perhaps the biggest



challenge for DWD competitors, and the DWD Club was recently delighted to host Loretta Rabbitt from NSW to conduct a Choreography workshop. Loretta has been a DWD judge since the foundation of the sport, and has achieved Freestyle Championships with 3 of her white Poodles.

Loretta has also made many TV appearances with her dogs; these include appearing on Australia's Got Talent, and regular segments on the Morning Show on Channel 7 as well as several commercials. They are an amazing and inspirational team.

A key focus of Loretta's workshop is building handlers' skills in moving to music in a manner which complements their dog, as well as skills in selecting music and choreographing a routine. She also emphasises skill development, in terms of both the number, the degree of difficulty of moves and seamlessness of cues. The aim is to showcase the dog who, above all, is the star of DWD routines.

This was no theoretical/lecture presentation. Teams were on their feet throughout the day, exploring and practising different styles of movement. The arena was filled with laughter and it's fair to say that handlers and dogs went home tired and inspired with lots of new ideas to put into practice as they refine current routines and develop new ones in the future.





*French Bulldogs are one of top 3 breeds found in fake advertisements.*

## PUPPY SCAMS AND BREEDER IDENTITY THEFT

– *Maria Arnold, Perfect Pets*

Last year Australians lost over 3.5 million dollars to online pet scams as three intersecting threads of pandemic culture resulted in the perfect storm: A huge increase in demand for pets; lock downs – which prevented people from meeting breeders in person and relying on a third party to deliver their pet; and more fraud.

Add to that the fact that the price of pets skyrocketed and scammers were looking for new and better ways to cash in. They needed to fool even the most cautious puppy buyers – those who might look for and check credentials – so breeder identity theft also hit new heights.

What the scammers learned during this time won't be unlearned, so whether you're a puppy buyer or a breeder, it's important to know how you can protect yourself, your money, and your identity.

### What is Breeder Identity Theft?

Breeder identity theft occurs when a scammer uses a breeder's details, information and/or photos to create fake online advertisements. They will: use photoshop to adjust a photo of a registration card; create an email address using the breeders prefix; provide the breeders phone number for verification purposes, and then elect not to display it; and even build a near exact copy of a legitimate breeders website and Facebook page. Photos, litter information, the breeders name and address, everything. Stolen, copied, and up on a new website – complete with an online payment portal. Scammers submit their ads to as many online platforms as they can, most of which are published without review.

While the number and impact of scammers grew during Covid, they've been at it for a long time. Perfect Pets is an Australian owned and operated



online pet directory that has had processes in place to screen out scammers since launching a decade ago. Fortunately, these processes stood up to COVID madness. The site lists Dogs Australia (ANKC) breeders and works closely with the ANKC member offices to ensure that new account applications are carefully verified. This is critical to ensuring the site remains secure and safe from scam activity and is part of an ongoing effort because small changes in the online space can have a big impact, and fast.

Monitoring scam activity is critical and Perfect Pets has seen scammers moving into other parts of the pet industry. In the last 6 months fundraising scams via fake veterinary websites have started to appear. The Australian Veterinary Association have been made aware and are understandably alarmed. It's important we are all vigilant and use a combination of good old fashioned teamwork and cooperation as well as the best and latest technology to keep up.

### **Breeders beware**

Breeders are also vulnerable beyond the online space as scammers may target them directly. One breeder was contacted by a prospective buyer who told her that she'd been scammed and felt she needed a photo of the breeders drivers licence and registration to proceed with purchasing a puppy. The unsuspecting breeder emailed the photos through, and before long her information had been used in countless scams where her name, business and photos were used to trick people. Apparently many of them actually turned up at the breeders house to collect their puppy only to be told they'd been scammed and should contact the police.

### **Responsible Buyers**

In the last 10 years Perfect Pets has put a lot of effort into trying to educate the general public about how important it is that they only buy from responsible, registered breeders. It's now evident that there's another message that we all need to get out there – **Pet lovers need to become responsible buyers!**

There are a number of reasons that scammers succeed:

- People looking for pets are often impulsive and impatient – they want their pet now, or yesterday, and will often buy a puppy from

wherever they can find one.

- People are prepared to pay very high prices for pets – \$10-\$15,000 is not at all uncommon – and typically for cross-bred dogs from inexperienced, unregistered breeders where there's been no health testing or other measures to ensure the well being of the puppy. Paying these prices just encourages greedy and unscrupulous people to get involved and cash in. Puppies listed on Perfect Pets average from \$2 – \$5000 and this is for a well bred, fully health tested pedigree puppy from fully registered ANKC breeder.
- People aren't taking advice and making sure that the 'breeder' they are talking to is a legitimate breeder, let alone registered and responsible.

### **What to do if your details have been used by a scammer?**

Perfect Pets always lets breeders know if account applications are submitted that are fraudulent and have used their details, and to date not a single scammer has had an account approved. While we're happy with that record, we do know that if scammers are submitting fake ads to us, they're usually posting them on other online sites that don't verify credentials. We always send breeders the details that have been submitted and then they are in a position to take all/any of the following steps:

- Call the scammer and pretend to be enquiring about a puppy. They usually want email communication only but sometimes they will answer the phone. Get as much information as you can, where are they – ask if you can visit, do they need a deposit



Pixabay

– they will, so organise to get the bank account details, and importantly – work out if they are here in Australia.

A lot of the scams are from overseas but there's a lot of Australian scammers too. If they are in Australia, you should contact your local police. In our experience you can be lucky or unlucky with the amount of help you get but it's always worth reporting. From our side we can, and have, picked up location information from our website and shared it with the police to help track down scammers.

- Send a cease and desist email. Also inform them that you've notified authorities with all of their details – including their location (determined from their activity on the internet).
- Check other sites that run pet ads. See if you can find ads for your prefix and breed. Not many are thorough with verification, some do no checks at all. If you find that your details are being used, contact the website and ask them to remove it immediately, and let them know that the police have been informed.
- If you have an online presence, let people know where you do and don't advertise. Some of the breeders on our site have a message saying: "we only advertise on Perfect Pets, Dogs Queensland and Dogzonline" while others go into more detail.

"Please note: We do not advertise on other platforms. If you see advertisements elsewhere using our photos, description, our registered prefix, or our breeder registration number, you are probably looking at potential imposters and scammers. If you have seen anything like this please contact us via Perfect Pets to ensure you are contacting us and not scammers."

Any breeders who'd like another avenue to connect with pet lovers that is secure, and exclusively Dogs Australia - ANKC breeders - [can join here](#), or contact [maria@perfectpets.com.au](mailto:maria@perfectpets.com.au) for more information.

[www.perfectpets.com.au](http://www.perfectpets.com.au)



## **2023 ANNUAL DOG SPORT PRESENTATION**

**Sunday 19th January 2023 –  
11.00am at Dogs Queensland**

### **Champion Trophies**

Obedience / Rally / Tracking / Lure Coursing / Track & Search / Agility / Herding / Dances with Dogs Freestyle / Heelwork to Music

### **Grand Champion Trophies**

Track & Search / Tracking / Obedience

### **Highest Scoring Dogs of the Year**

Obedience / Lure Coursing / Rally / Trick Dog

### **Highest Scoring Club of the Year**

Obedience & Tracking / Rally

**Event is catered by Wags Cafe  
Buffet two course meal**

**Cost: TBA**

**Payment made via [Show Manager](#)**

*Drinks are additional*

*Please note this is a licensed venue – no BYO*

**Raffle – National & State Trials Committee  
Prize for Best Dressed club table**

*Our last event was booked out!*


*Please indicate the club table you wish to be seated at or ask your club secretary to confirm table numbers.*


**[theyoungs4@bigpond.com](mailto:theyoungs4@bigpond.com) or 0419653076**



# From The Dog World Archives:

In this issue we feature a trip down memory lane showcasing pages from November 2001



  
 NOVEMBER, 2001

*Photo*

Registered by Australia Post  
Publication No. PP437149/00024

## TANOSHII AKITA INU



**AKITAHAVEN WILD CARD**  
(Ace) (photo at 8 months)

Ace is our Ch. & Am. Ch. Timbersky Hurricane Solomon (imp. USA) grandson. He has inherited the wonderful substance, bone and head from Solomon. He also has correct movement and is full of attitude. He is already a multi Class in Group and Show winner. He has a great future ahead of him as he matures.

**BREEDING WITH PURPOSE FOR QUALITY.**  
**ALL STOCK HEALTH SCREENED BEFORE BREEDING.**



**CH. TANOSHII CHERRY BLOSSOM**  
(Cherry)

Cherry is a big girl with great substance and fabulous movement. She is a multi Class in Group and Show winner as well as B/G winner. She is fun loving and loves being the centre of attention. She has also passed her size and movement onto her puppies.

Watch for our new additions to hit the ring in 2001. Our USA import, Solomon, has given us the substance, size, bone and heads called for in the standard. We breed for type, soundness and temperament. Our Akitas (and their families) are working in Obedience, "Canines for Disabilities" and Conformation - as well as loving companions.

All enquiries welcome.

Norm & Vicki Schneider • Phone/Fax: (07) 3297 6530 • Mobile: 0407 115 674  
Email: tanoshii@powerup.com.au • Website: www.gocities.com/tanoshii\_australia

NOVEMBER 2001 THE QUEENSLAND DOG WORLD PAGE 8

# Filnor

## BEST IN SHOW



**2001 BEAGLE CLUB OF QUEENSLAND CHAMPIONSHIP SHOW**

**BEST OF BREED**  
2001 Royal Queensland Show

*Photos by Paul May*



**CH. FILNOR CONSEQUENCE**

REDCLIFFE PENINSULA K.C.  
2001 BEAGLE CLUB OF QUEENSLAND Open Show

Co-owned & Handled by  
Karen Mangan

**CH. FILNOR ROGER BANNISTER**


Continuing the tradition set by: Grand CH. Filnor Songbird (A.O.M.)  
Grand CH. Filnor Limelight (A.O.M.) • Aust. & N.Z. CH. Filnor Humphrey (A.O.M.)  
Breeder of Queensland's only National Beagle Council Awards of Merit - including CH. Filnor Primadonna (pending)

**Norma Shipley, 844-848 West Mt. Cotton Rd., SHELDON 4157 • Ph. (07) 3206 3361**

NOVEMBER 2001 THE QUEENSLAND DOG WORLD PAGE 4

## Beautiful BUT DANGEROUS

### Plant Poisoning in Pets



**Oleander** with its flowers of white, pink, red and violet, adds beauty to many surroundings, both indoor and outdoor. It may also be lethal.

Like a number of other house or ornamental plants, oleander combines outward beauty with the presence of toxic principles. In the case of oleander, the leaves contain a cardioactive glycoside - oleandrin - similar in action to digitalis, but more persistent in its action, and therefore more toxic. A single oleander leaf may be fatal when consumed by children, pets or farm animals. Fortunately, the green leaves are bitter tasting, and it is unlikely that pets such as puppies will eat them. However, dried leaves may be eaten in playfulness resulting in poisoning, marked by vomiting, diarrhoea, rapid breathing and various disturbances of cardiac rhythm.

While plant poisoning in pets is less common than in livestock, it can pose a perplexing problem for the animal owner and the veterinarian. The increased cultivation of house plants and outside ornamental plants has heightened the risk of poisoning in children and pets. For many years, aspirin was the leading cause of poisoning in children, but with the advent of safety closure caps the incidence of toxicity to this common drug has decreased and, today, houseplants are the most frequent agent involved in poisoning of children under five years of age and pets.

Older dogs and cats are not likely to eat plants, but puppies, and to a lesser extent kittens, may as a consequence of playfulness or boredom mouth anything within reach - including plants. There have also been cases reported in which pet animals have been deliberately led hallucinogenic plants.

Various toxic principles contained in plants are responsible for poisoning. These include alkaloids, polypeptides and amines, phenanthrene compounds, glycosides, oxalates, resins and resins, and phytotoxins. Livestock, which have long been exposed to these agents have developed elaborate detoxifying systems which offer some protection against poisoning, but pet animals have no such protective mechanisms, and are therefore more vulnerable.

In addition to oleander, some common house or ornamental plants involved in the poisoning of pets are:

**Precatory Beans.** These colourful beans are illegally imported to make necklaces and rosaries, and the ingestion of beans on which the seed coat has been cracked can cause severe gastroenteritis.

**Castor Beans,** which are used for the commercial production of castor oil. Castor bean plants are sometimes grown as ornamentals, and the ingestion of seeds on which the coating is broken, as happens at maturity, can cause poisoning in animals.

The toxic principle is ricin which produces profuse haemorrhagic diarrhoea, possibly convulsions, marked thirst and abdominal pain. When the plant is used as an ornamental, it is advisable to snip off the flowering heads to guard against ingestion by pets.

**Prunus Species,** which includes several varieties of cherry, apple, apricot and almond trees. The seeds, twigs and bark of these trees contain a cyanogenic glycoside, which when hydrolysed, produces cyanide. Livestock may be poisoned by eating wilted leaves, and dogs feeding on garbage or the residue from cider production may suffer acute poisoning. Cases of toxicity have been reported in dogs eating the bark of cherry trees, and pet birds have been poisoned through eating apple seeds. Poisoning runs a rapid course, with death occurring within one or two hours. Clinical signs include excitement, followed by depression, uncoordination and convulsions. Blood of poisoned animals is an unnatural bright red.

**Nettles,** which include the stinging nettle, and bull nettle. These have hairs which, when rubbed off the plant, release acetylcholine, a compound which stimulates the parasympathetic nervous system. The most common type of poisoning is observed in hunting dogs which encounter nettles in marshy areas. Clinical signs include excessive salivation and irritation of the mouth - leading to frequent pawing, muscular weakness and tremors.

These are a few plants which have been involved in reported poisonings. There are a number of others which are potentially toxic including calladium, foxglove, lily of the valley, snowdrop and iris.

Many of the plants involved in poisoning of pet animals induce vomiting after ingestion, and this reduces absorption of toxic principles. However, in all cases of suspected poisoning the pet owner should call his/her veterinarian and attempt to specifically locate the suspected plant.

NOVEMBER 2001 THE QUEENSLAND DOG WORLD PAGE 5

# Christmas Gift Ideas



Water  
Bottle

\$5

DQ Caps

\$15



2023 Calendar

REDUCED  
PRICE -  
NOW ONLY

\$5

DQ Bag

\$2.50



HURRY! DON'T MISS OUT - ONLY WHILE STOCKS LAST!



## Kerchief Collar + Dog Lead



\$5



## Entertainer Ball

\$5

## Rope Toy



\$5

## Tug Tyre Toy



\$5

## Puppy Pack

REDUCED PRICE – NOW ONLY

\$15



Contents include:

- Nexgard Tick, Flea and Worm Chewable (size to suit your dog)
- Plush Puppy 100ml O.M.G Multi Purpose Grooming Spray
- Royal Canin Educ Nutritional Supplement 50g
  - EAC Animal Care Pre-biotic 20g
  - Dogs Queensland Water Bottle
  - Dog Toy - one only
- Hair Remover or Royal Canin Spray Bottle Dogs Queensland
- Dogs Queensland Calendar and Carry Bag

All products can be purchased from the DQ shop at Durack from Monday to Friday (8am to 5pm), by phoning the office on 3252 2661 or email Pina at [pina@dogsqueensland.org.au](mailto:pina@dogsqueensland.org.au). A postage fee applies if required.



**All schedules up to and including May 2023 Shows and Trials should be submitted as soon as possible to the Dogs Queensland office.**

**Please ensure all information is completed including Junior Handlers, Sweepstakes, Nominated Classes etc.**

**Submissions by [showmanager.com.au](http://showmanager.com.au) are preferred or email [ian@dogsqueensland.org.au](mailto:ian@dogsqueensland.org.au).**



Baby Puppies must not be entered in any Show or Trial Event until the dog is registered and allocated a number from Dogs Queensland.



# SHOW GAZETTE

**JANUARY 2023**



**Show Dates: Friday 28 January and Saturday 29 January 2023**

**Entries Close: Friday 6 January 2023**

**GOLD COAST CANINE CLUB AND BEENLEIGH & DISTRICTS KENNEL CLUB INC**

Venue: Dogs Queensland Sports Grounds, 247 King Ave Durack QLD

**2 CHAMPIONSHIP SHOWS AND 2 OPEN SHOWS**

**GOLD COAST CANINE CLUB**

**BEENLEIGH & DISTRICTS KENNEL CLUB INC**

**CASH AND SASH SHOWS**

**Classes:** Champ: 1(1a), 2(2a), 3(3a), 4(4a), 5(5a), 10(10a), 11(11a), 18(18a)  
Open: 1(1a), 3(3a), 4(4a), 5(5a), 11(11a), 18(18a)

**Entry Fees**

Championship Show \$15.00,  
Baby Puppies \$10.00 Open Show \$5.00  
Catalogues – Printed \$5.00 (covers both shows),  
Online \$2.00 (covers both shows)

Championship Show \$15.00,  
Baby Puppies \$10.00 Open Show \$3.00  
Catalogues – Printed \$5.00 (covers both shows),  
Online \$2.00 (covers both shows)

**Entries to:** Gold Coast Canine Club,  
PO Box 356, Ormeau Qld 4208

Beenleigh & Districts Kennel Club,  
PO Box 356, Ormeau Qld 4208

**Online Entries:**

[www.showmanager.com.au](http://www.showmanager.com.au)



**Enquiries:**

Donna Ph: 0412430358

Jacqui: 0401889999 or  
Andrew: 0428193821 (text only)

**Friday 28 January 2023**

**Championship Show - Judging starts at 6:00PM**

**Saturday 29 January 2023**

**Championship Show – Judging starts at 5:00PM**

TBA	Group 1	TBA	Group 1
TBA	Group 2	TBA	Group 2
TBA	Group 3	TBA	Group 3
TBA	Group 4	TBA	Group 4
TBA	Group 5	TBA	Group 5
TBA	Group 6	TBA	Group 6
TBA	Group 7	TBA	Group 7
TBA	General Specials	TBA	General Specials

**Friday 28 January 2023**

**Open show judging starts at 6:30PM**

**Saturday 29 January 2023**

**Open Show - Judging starts at 5:30PM**

TBA	Group 1	TBA	Group 1
TBA	Group 2	TBA	Group 2
TBA	Group 3	TBA	Group 3
TBA	Group 4	TBA	Group 4
TBA	Group 5	TBA	Group 5
TBA	Group 6	TBA	Group 6
TBA	Group 7	TBA	Group 7

No General Specials

No General Specials

Proudly Sponsored by





# TRIAL GAZETTE

## JANUARY 2023


**Trial Date: Saturday 21 January 2023**

**Entries Close: Sat 7 January 2023**

**HERVEY BAY DOG OBEDIENCE & AGILITY CLUB**

Venue: 204 Boundary Road, Wondunna QLD

**DOUBLE TRICK DOG TRIAL**

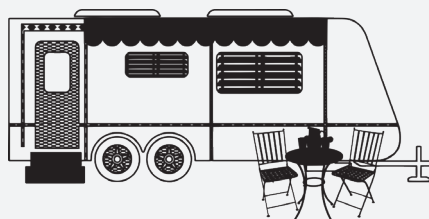
Entry Fees:	\$10.00
Entries to:	Hervey Bay Dog Obedience & Agility Club, PO Box 365, Hervey Bay QLD 4655
Online Entries Preferred:	<a href="http://www.k9entries.com/ankc">www.k9entries.com/ankc</a> 
Enquiries:	Ph: 0487052929 Email <a href="mailto:hbdoci@live.com.au">hbdoci@live.com.au</a>
<b>Judging starts at 4:00PM with vetting at 3:15PM</b>	
TBA	Tricks all classes
TBA	Tricks all classes

### TITLES NOTICE

**When applying for both Championship and Non Championship Titles members are notified they must post the **original** pedigree certificate to Dogs Queensland. We regret to advise emails are not acceptable.**

### CAMPING BOOKINGS AT THE DOGS QUEENSLAND SPORTS GROUNDS

**All bookings to camp at the Sports Grounds must be made using the **SHOW MANAGER** website, available through the Dogs Queensland website.**





# Affiliated Clubs and Services

## BREED & GROUP CLUBS

### American Staffordshire Terrier Club of Qld Inc

Mrs M Gordon  
PO Box 908 Jimboomba QLD 4280  
0403 742 555  
[secretary@astcq.com](mailto:secretary@astcq.com)

### Australian Shepherd Club of Qld

Ms A Lally  
0419 597 661  
[amanda.lally@icloud.com](mailto:amanda.lally@icloud.com)

### Australian Terrier Club of Qld

Mrs L Roebig  
0419 791 464  
[ringyspaniel@hotmail.com](mailto:ringyspaniel@hotmail.com)

### Basenji Breed Network Qld

Ms E Blair  
PO Box 1060 Spring Hill QLD 4004  
(07) 3217 5943  
[basenjinetnetworkqld@gmail.com](mailto:basenjinetnetworkqld@gmail.com)

### Basset Hound Club of Qld

Ms M McGinn  
PO Box 14 Samford QLD 4520  
(07) 3289 4033 / 0416 213 253  
[michelle.mcgin@gmail.com](mailto:michelle.mcgin@gmail.com)

### Beagle Club of Qld

Mrs T McNicol  
PO Box 3107 West Ipswich QLD 4305  
0422 158 879  
[secretary@beagleclubqld.org](mailto:secretary@beagleclubqld.org)

### Belgian Shepherd Dog Club of Qld Inc

Miss C Lowther  
PO Box 185, Burpengary, Qld, 4505  
0497 628 960  
[secretary@bsdqc.com](mailto:secretary@bsdqc.com)

### Border Collie Club of Qld Inc

Mrs J McCann  
0499 433 089  
[jopearl@powerup.com.au](mailto:jopearl@powerup.com.au)

### Borzoi Club of Qld Inc

Mrs M Davis  
(07) 3372 4657  
[russkimir@dodo.com.au](mailto:russkimir@dodo.com.au)

### Bullmastiff Club of Qld

Mrs B Bell  
0404 702 423  
[bmcsecqld1@hotmail.com](mailto:bmcsecqld1@hotmail.com)

### Bull Terrier Club of Qld Inc

Mrs L Moeser  
PO Box 595 Jimboomba QLD 4280  
0423 707 380  
[qldbullterrierclub@gmail.com](mailto:qldbullterrierclub@gmail.com)

### Cattle Dog & Kelpie Club of Qld Inc

Miss K Williamson  
0428 195 933  
[cattledogkelpie.clubqld@gmail.com](mailto:cattledogkelpie.clubqld@gmail.com)

### Cavalier King Charles Spaniel Club (Qld)

Ms E McCutcheon  
PO Box 1101 Wynnum QLD 4178  
(07) 3893 0847 / 0448 810 847  
[elisa\\_mccutcheon@bigpond.com](mailto:elisa_mccutcheon@bigpond.com)

### Central Qld Toy Dog Club

Mrs J Sweeney  
(07) 4933 3399 / 0407 138 860  
[tracjobea@hotmail.com](mailto:tracjobea@hotmail.com)

### Chihuahua Club of Qld

Mrs J Watt  
(07) 3372 3654 / 0418 153 115  
[wachowa@ozemail.com.au](mailto:wachowa@ozemail.com.au)

### Cocker Spaniel Club of Qld Inc

Mrs K Hutt  
0402 119 013  
[cscqldinc@gmail.com](mailto:cscqldinc@gmail.com)

### Collie Rough and Smooth Club of Qld Inc

Miss C Lewty  
0407 017 598  
[secretary.collie.rns.club.qld@gmail.com](mailto:secretary.collie.rns.club.qld@gmail.com)

### Dachshund Club of Qld

Miss A Carius  
(07) 3420 0661  
[ainsliecarius@icloud.com](mailto:ainsliecarius@icloud.com)

### Dalmatian Association of Qld Inc

Mrs K Murray  
0405 988 130  
[daqsec@outlook.com](mailto:daqsec@outlook.com)

### Dobermann Club of Qld Inc

Mr Kevin Zimmerle  
0439 799 944  
[secretary@doberclubqld.com.au](mailto:secretary@doberclubqld.com.au)

### English Springer Spaniel Assoc of Qld Inc

Miss C Williams  
0403 240 296  
[cathatina63@outlook.com](mailto:cathatina63@outlook.com)

### Fox Terrier Club of Qld

Mrs J Cantlon  
(07) 4129 7166  
[waitapu11@gmail.com](mailto:waitapu11@gmail.com)

### French Bulldog Club of Qld

Ms M McFadzen  
PO Box 165 Gladstone QLD 4680  
0439 431 239  
[secretaryfbcqld@gmail.com](mailto:secretaryfbcqld@gmail.com)

### German Shepherd Dog Club Qld Inc

Mr G Williams  
0434 048 084  
[secretary@gsdcqld.org.au](mailto:secretary@gsdcqld.org.au)

### German Shorthaired Pointer Club Of Qld

Mrs K Wishart  
0402 214 253  
[kathwishart@iinet.net.au](mailto:kathwishart@iinet.net.au)

### Golden Retriever Club of Qld Inc

Mrs K Vowell  
0423 320 020  
[karen.vowell@bigpond.com](mailto:karen.vowell@bigpond.com)

### The Great Dane Society of Qld Inc

Mrs V Landsbury  
PO Box 304 Rosewood 4340  
0400 620 190  
[gdsqinc@gmail.com](mailto:gdsqinc@gmail.com)

### Griffon Club of Qld

Ms N Lawrence  
PO Box 32 Samford QLD 4520  
0458 116 833  
[griffonclubofqld@gmail.com](mailto:griffonclubofqld@gmail.com)

### Hound Club of Qld

Mrs T McNicol  
PO Box 3107 West Ipswich 4305  
0422 158 879  
[houndclubqld@hotmail.com](mailto:houndclubqld@hotmail.com)

### Irish Wolfhound Club of Qld

Mr C Gorman  
0400 144 524  
[iwcqld@gmail.com](mailto:iwcqld@gmail.com)

### Labrador Retriever Club of Qld Inc

Mrs C Wardle  
0412 191 005  
[lrcqinc@gmail.com](mailto:lrcqinc@gmail.com)

### Old English Sheepdog Club of Qld

Mr R Schnaars  
(07) 3201 0952 / 0408 730 485  
[ottaba@bigpond.net.au](mailto:ottaba@bigpond.net.au)

### Original Australian Dog Breeds Club of Qld (The)

Mrs J Hafey  
0419 114 394  
[jodyhafey@gmail.com](mailto:jodyhafey@gmail.com)

### Poodle Club of Queensland Inc

Ms P Morgan  
PO Box 171 Aspley QLD 4034  
0414 501 707  
[qpcsecretary@yahoo.com.au](mailto:qpcsecretary@yahoo.com.au)

### Qld Afghan Hound Association

Ms J Anderson  
0428 800 410  
[ohsoposh8@gmail.com](mailto:ohsoposh8@gmail.com)

### Qld Boston Terrier Club

Mrs K McConnell  
0411 955 501  
[bostonmac@bigpond.com](mailto:bostonmac@bigpond.com)

### Qld Boxer Club

Ms S Davies  
PO Box 878 Archerfield QLD 4108  
0408 197 250  
[secretary@qldboxerclub.org](mailto:secretary@qldboxerclub.org)

### Qld Bulldog Club

Mrs J Dinh  
0434 142 386  
[qldbulldogclub@gmail.com](mailto:qldbulldogclub@gmail.com)

### Queensland Gundog Association

Mr A Adams  
(07) 3278 8001  
[qldgundog@gmail.com](mailto:qldgundog@gmail.com)

### Queensland Japanese Spitz Club

Ms K Jones-Watson  
0407 444 070.  
[katiemelissawatson@gmail.com](mailto:katiemelissawatson@gmail.com)

### Qld Sighthound Association

Mrs J David  
0414 605 513  
[qsa.enquiry@hotmail.com](mailto:qsa.enquiry@hotmail.com)

### Rhodesian Ridgeback Club of Qld Inc

Ms R Oberholzer  
0418 984 605  
[enquiry@rrcq.com.au](mailto:enquiry@rrcq.com.au)

### Rottweiler Club of Qld Inc

Mrs A Heinemann  
PO Box 872 Beenleigh QLD 4207  
0427 545 726  
[rcqld@yahoo.com.au](mailto:rcqld@yahoo.com.au)

### Saint Bernard Club of Qld Inc

Mr R Whittet  
PO Box 7747 Toowoomba Sth Qld 4350  
0438 360 191 (Emma Forsyth)  
[stbernardclubqld@gmail.com](mailto:stbernardclubqld@gmail.com)



# Affiliated Clubs and Services

## Setter Club of Qld

Mrs C Gorey  
PO Box 3123 North Mackay QLD 4740  
0438 598 597  
[setterclubqld@bigpond.com](mailto:setterclubqld@bigpond.com)

## Shetland Sheepdog Club of Qld Inc

Miss A McGarry  
0423 467 385  
[nurserygirl31@hotmail.com](mailto:nurserygirl31@hotmail.com)

## Sporting Spaniel Club of Qld

Mrs J Stoneley  
(07) 3206 2618  
[estoneley@bigpond.com](mailto:estoneley@bigpond.com)

## Sporting Terrier Club of Qld

Mrs D Major  
PO Box 5264 Daisy Hill 4127  
0412 430 358  
[secretary.stcq@gmail.com](mailto:secretary.stcq@gmail.com)

## Staffordshire Bull Terrier Club of Qld

Mrs A Bainbridge  
PO Box 60 Marburg QLD 4346  
0437 109 162  
[clubsecretary@sbtcq.net](mailto:clubsecretary@sbtcq.net)

## Tenterfield Terrier Club of Qld Inc

Mrs M Holt  
PO Box 43 Beerwah QLD 4519  
(07) 5494 9993  
[dimah@bigpond.com](mailto:dimah@bigpond.com)

## Tibetan Spaniel Club of Qld

Mrs V Schneider  
0407 115 674  
[tanoshii@tanoshiikennels.com](mailto:tanoshii@tanoshiikennels.com)

## Toy Dog Club of Qld

Ms D Davies  
(07) 5464 6206 / 0466 962 061  
[lizbiz@internode.on.net](mailto:lizbiz@internode.on.net)

## Welsh Corgi Club of Qld

Ms S Kilby  
0433 363 640  
[sheree.kilby@yahoo.com.au](mailto:sheree.kilby@yahoo.com.au)

## West Highland White Terrier Club of Qld

Mrs M Cunningham  
(07) 5548 6744 / 0418 572 579  
[westhighlandqld@gmail.com](mailto:westhighlandqld@gmail.com)

## Whippet Club of Queensland

Mrs S Townsend  
0402 602 888  
[whippetclubqld@gmail.com](mailto:whippetclubqld@gmail.com)

## Working Dog Club of Queensland

Mrs B Wheatley  
07 3208 7190 / 0419 782 492  
[bev.lyn.wheatley@gmail.com](mailto:bev.lyn.wheatley@gmail.com)

## SOUTHERN ZONE 1

### Allora Kennel Club

Ms K Lewis  
(07) 4667 1590  
[octaviaepugs@gmail.com](mailto:octaviaepugs@gmail.com)

### Beaudesert Kennel Club

Mrs V Schneider  
0407 115 674  
[tanoshii@tanoshiikennels.com](mailto:tanoshii@tanoshiikennels.com)

## Beenleigh & District Kennel Club

Miss J Young  
0401 889 999  
[ebt2013@outlook.com](mailto:ebt2013@outlook.com)

## Brisbane Valley Kennel Club

Mrs C Holman  
0430 940 063  
[borolo1@bigpond.com](mailto:borolo1@bigpond.com)

## Burnett Kennel Club

Mrs A Morgan  
0427 686 121  
[burnettkennelclubwondai@gmail.com](mailto:burnettkennelclubwondai@gmail.com)

## Caboolture Kennel Club

Miss V Wyness  
0404 037 095  
[vickiwnness@bigpond.com](mailto:vickiwnness@bigpond.com)

## Darling Downs Kennel Club

Miss R Green  
(07) 4696 6216 / 0410 651 756  
[ridgebacks@chilolo.net.au](mailto:ridgebacks@chilolo.net.au)

## Gold Coast Canine Club

Mrs A Proudfoot  
0405 060 550  
[icanhazdogs@gmail.com](mailto:icanhazdogs@gmail.com)

## Gundog & Heavy Breeds Club of Qld

Miss A Carius  
(07) 3420 0661  
[ainslicarius@icloud.com](mailto:ainslicarius@icloud.com)

## Gympie & District Kennel Club

Miss K Wilson  
PO Box 574 Gympie Qld 4570  
0417 729 803  
[boshellie@activ8.net.au](mailto:boshellie@activ8.net.au)

## Ipswich Kennel Club Inc

Mrs D McLean  
(07) 5426 1261 / 0408 261 659  
[ebonhaus@dodo.com.au](mailto:ebonhaus@dodo.com.au)

## Junior Kennel Club of Qld

Mr M Watt  
(07) 3372 3654  
[michael.watt13@gmail.com](mailto:michael.watt13@gmail.com)

## Kennel Association of Qld

Mrs J Wilshier  
(07) 3279 7339 / 0417 799 115  
[cavlamour@bigpond.com](mailto:cavlamour@bigpond.com)

## Ladies Kennel Association of Qld

Mrs J Lanham  
PO Box 356 Ormeau QLD 4208  
0409 720 882  
[lanham.1@bigpond.com](mailto:lanham.1@bigpond.com)

## Lockyer Valley Kennel Club

Mrs K Knight  
PO Box 50 Lowood QLD 4311  
0407 621 726  
[sibes2@hotmail.com](mailto:sibes2@hotmail.com)

## Maree Kennel Club

Mrs J Ireland  
(07) 3814 3069  
[graedon33@hotmail.com](mailto:graedon33@hotmail.com)

## Nanango Kennel Club

Mrs V Mannion  
PO Box 533 Nanango QLD 4615  
0417 004 031  
[nanangokennelclub@gmail.com](mailto:nanangokennelclub@gmail.com)

## Northern Classic Kennel Club

Mr B Burrows  
0416 450 186  
[aussilky@gmail.com](mailto:aussilky@gmail.com)

## Pine Rivers Kennel Club

Mrs J Glover  
PO Box 453 Caboolture QLD 4510  
0419 663 942  
[judy@fjweis.com](mailto:judy@fjweis.com)

## Qld Kennel Council

Mrs S Watherston  
0424 708 889  
[shanspitz@gmail.com](mailto:shanspitz@gmail.com)

## Redcliffe Peninsula Kennel Club

Ms L Horne  
(07) 3285 5503 / 0418 783 823  
[liane@lowenhart.net](mailto:liane@lowenhart.net)

## Sunshine Coast Kennel Club

Ms S Smith  
PO Box 151 Landsborough 4550  
0400 018 877  
[info@celticheartbc.com.au](mailto:info@celticheartbc.com.au)

## Waterloo Bay Kennel Club

Mrs R Fazey  
0402 944 650  
[waterloobaykennelclub@gmail.com](mailto:waterloobaykennelclub@gmail.com)

## Western Suburbs Kennel Club

Mrs G Hovey-Jacobs  
(07) 3409 4705 / 040 826 333  
[dandydogs3@gmail.com](mailto:dandydogs3@gmail.com)

## Yuggera Canine Club

Mrs P Johansen  
0406 538 003  
[pjjomeja@gmail.com](mailto:pjjomeja@gmail.com)

## CENTRAL ZONE 2

### Bundaberg Canine Club Inc

Mrs M Norton  
PO Box 7370 North Bundaberg QLD 4670  
(07) 4157 8338 / 0437 578 338  
[bundabergcanineclub@outlook.com](mailto:bundabergcanineclub@outlook.com)

### Callide Valley Obedience & Kennel Club

Mrs S Cook  
0417 628 400  
[glenlion@glenlion.com](mailto:glenlion@glenlion.com)

### Capricorn Coast Kennel Club

Mrs K Schroeder  
PO Box 8243 Allenstown QLD 4700  
(07) 4939 7329  
[oomachuk@hotmail.com](mailto:oomachuk@hotmail.com)

### Gladstone Kennel Club Inc

Ms M McFadden  
PO Box 7245 Gladstone QLD 4680  
0439 431 239  
[gkc@live.com.au](mailto:gkc@live.com.au)

### Hervey Bay Kennel Club

Mrs B Mangin  
(07) 4157 8098 / 0429 478 211  
[herveybaykennelclub@gmail.com](mailto:herveybaykennelclub@gmail.com)

### Isis & District Canine Club

Mrs B Mangin  
(07) 4157 8098 / 0429 478 211  
[isis.dist.cci@gmail.com](mailto:isis.dist.cci@gmail.com)



# Affiliated Clubs and Services

## **Mackay Kennel Club**

Mrs M Volker  
P O Box 7156, Mackay MC QLD 4741  
0419 760 385  
[mackaykennelclub@gmail.com](mailto:mackaykennelclub@gmail.com)

## **Maryborough Kennel Club Inc**

Mrs L McLaughlin  
PO Box 402 Maryborough QLD 4650  
0408 896 260  
[lizamcl.31@gmail.com](mailto:lizamcl.31@gmail.com)

## **Mount Morgan & Bouldercombe Kennel Club**

Mr J Whitehead  
PO Box 8243 Allerstown QLD 4700  
407 620 971  
[j.n.whitehead@bigpond.com](mailto:j.n.whitehead@bigpond.com)

## **The Pioneer Valley Kennel Club**

Miss L McCrindle  
(07) 4959 1353  
[aslanwhippets@hotmail.com](mailto:aslanwhippets@hotmail.com)

## **Rockhampton Kennel Club Inc**

Mrs J Scott  
PO Box 553 Yeppoon QLD 4703  
(07) 4939 7698  
[calstonia2@bigpond.com.au](mailto:calstonia2@bigpond.com.au)

## **Sarina Kennel Club**

Mrs C Donaldson  
PO Box 742 Sarina QLD 4737  
0407 150 815  
[candrondonaldson@bigpond.com](mailto:candrondonaldson@bigpond.com)

## **NORTHERN ZONE 3**

### **Atherton Tableland Kennel Club**

Mr C Coggan  
0410 505 810 / 4775 8808 (Wk)  
[athertontkc@gmail.com](mailto:athertontkc@gmail.com)

### **Bowen Kennel Club**

Mrs L Bryson  
PO Box 915 Bowen QLD 4805  
0400 938 524  
[design@dognewsaustralia.com](mailto:design@dognewsaustralia.com)

### **Cairns City Kennel Club Inc**

Mrs K Frame  
PO Box 252 Cairns QLD 4870  
(07) 4055 6720  
[kell55@bigpond.com](mailto:kell55@bigpond.com)

### **Charters Towers Kennel Club**

Mrs T Hill  
PO Box 1980 Charters Towers QLD 4820  
0466 245 758  
[darchaltan@yahoo.com.au](mailto:darchaltan@yahoo.com.au)

### **Cloncurry & District Canine Club**

Ms F Rae  
0427 958 426  
[cdclub@outlook.com.au](mailto:cdclub@outlook.com.au)

### **Ingham Kennel & Obedience Club Inc**

Mrs R Horton  
PO Box 776 Ingham QLD 4850  
0417 611 085  
[rhonmor@hotmail.com](mailto:rhonmor@hotmail.com)

### **Innistail Kennel Club**

Mrs M Adkins  
(07) 4093 5304  
[dimbulahpostshop@bigpond.com](mailto:dimbulahpostshop@bigpond.com)

## **Mareeba & District Kennel Club**

Mrs B Houston  
PO Box 2295 Cairns QLD 4870  
0400 440 186  
[MareebaKennelClub@hotmail.com](mailto:MareebaKennelClub@hotmail.com)

## **Proserpine Kennel Club Inc**

Mrs J Connolly  
PO Box 232 Koumala QLD 4738  
0458 010 838  
[proserpinekc@gmail.com](mailto:proserpinekc@gmail.com)

## **Thuringowa City Kennel Club**

Ms E Ryan  
PO Box 7738 Garbutt BC QLD 4814  
0412 604 340  
[erin.ryan47@gmail.com](mailto:erin.ryan47@gmail.com)

## **Townsville Kennel Association Inc**

Mrs L Marsden  
PO Box 7738 Garbutt BC QLD 4814  
0429 896 558  
[lcl72711@bigpond.net.au](mailto:lcl72711@bigpond.net.au)

## **Tully & District Kennel Club**

Mrs F Vecchio  
PO Box 1290 Tully QLD 4854  
0418 197 093  
[info@tullykennelclub.com.au](mailto:info@tullykennelclub.com.au)

## **OBEDIENCE / AGILITY / TRACKING**

### **All Breeds Tracking Club Incorporated**

Ms S Bull  
PO Box 368 Ormeau QLD 4208  
0499 022 490  
[twvisions@hotmail.com](mailto:twvisions@hotmail.com)

### **Brisbane Dog Training Club Inc**

Mrs M Calvert  
PO Box 1288 Oxley QLD 4075  
0422 921 861  
[info@bdtc.org.au](mailto:info@bdtc.org.au)

### **Caboolture Sports Dog Obedience Club**

Ms S Gibson  
PO Box 491 Morayfield QLD 4506  
0404 052 519 / 0450 902 520  
[secretary@caboolturedogobedience.com.au](mailto:secretary@caboolturedogobedience.com.au)

### **Cairns City Kennel Club Inc (Obedience Section)**

Mrs J Wilkinson  
PO Box 252 Cairns QLD 4870  
(07) 4055 4040  
[jeanw22@bigpond.com](mailto:jeanw22@bigpond.com)

### **Canine Obedience Club of Townsville**

Ms J Forbes-Faulkner  
PO Box 991 Aitkenvale QLD 4814  
0427 725 982  
[judyforf@bigpond.net.au](mailto:judyforf@bigpond.net.au)

### **Continental Herding Club Inc**

Mr J Mitchell  
0406 301 390  
[countrybouv@gmail.com](mailto:countrybouv@gmail.com)

### **Dances with Dogs Club Qld**

Miss G Westmore  
0488 999 683  
[dwdcq@live.com.au](mailto:dwdcq@live.com.au)

## **DogzCairns Inc**

Ms S Daniels  
PO Box 644 Smithfield QLD 4878  
0408 183 038  
[dogzcairnsinc@gmail.com](mailto:dogzcairnsinc@gmail.com)

## **Evergreen Tracking Dog Club Inc**

Mrs A Cunningham  
0438 719 551  
[evergreentdc@outlook.com.au](mailto:evergreentdc@outlook.com.au)

## **Gladstone Dog Obedience Club (Obedience/Agility/Tracking Club)**

Miss J Chivers  
P O Box 948, Gladstone QLD 4680.  
0448 449 699  
[gladstoneobedience@gmail.com](mailto:gladstoneobedience@gmail.com)

## **Gold Coast Dog Obedience Training Club Inc**

Ms V Miles-Owen  
PO Box 143 Southport QLD 4215  
0450 721 189  
[gcdotc@yahoo.com.au](mailto:gcdotc@yahoo.com.au)

## **Gympie Dog Obedience Club Inc**

Ms M Abrey  
PO Box 404 Gympie QLD 4570  
0408 544 259  
[gympiedogobedienceclubinc@gmail.com](mailto:gympiedogobedienceclubinc@gmail.com)

## **Hervey Bay Dog Obedience & Agility Club Inc**

Ms K Richardson  
PO Box 365 Hervey Bay QLD 4655  
0459 843 820  
[kkgonemad@gmail.com](mailto:kkgonemad@gmail.com)

## **Ipswich Dog Obedience Club**

Tina McKenzie  
PO Box 2007, Nth Ipswich QLD 4305  
0411 433 866  
[tinamckenzie1947@bigpond.com](mailto:tinamckenzie1947@bigpond.com)

## **Jimboomba Dog Training Club**

Ms S Chandler  
(07) 5546 3355  
[suzanne.chandler12@gmail.com](mailto:suzanne.chandler12@gmail.com)

## **Lockyer Valley Dog Training Club Inc**

Mrs A Williams  
PO Box 321 Laidley QLD 4341  
(07) 5465 7450 / 0417 799 281  
[amalie\\_w@westnet.com.au](mailto:amalie_w@westnet.com.au)

## **Logan All Breeds Dog Obedience Club Inc**

Ms N Mann  
PO Box 23 Kingston QLD 4114  
0405 069 335  
[labdocsecretary@bigpond.com](mailto:labdocsecretary@bigpond.com)

## **Magpies Mackay & District Obedience Club**

Ms K Nilson  
PO Box 1185 Mackay QLD 4740  
0437 849 184  
[secretary@mackaydogobedience.com](mailto:secretary@mackaydogobedience.com)

## **Maryborough Dog Obedience Club**

Ms P Ray  
PO Box 3050 Maryborough QLD 4650  
0432 794 035  
[pamelaray111@gmail.com](mailto:pamelaray111@gmail.com)



# Affiliated Clubs and Services

## **Metropolitan Dog Obedience Club Inc**

Mrs W Waller  
PO Box 337 Zillmere QLD 4034  
0413 911 511  
[wendywaller59@bigpond.com](mailto:wendywaller59@bigpond.com)

## **Nanango Kennel Club**

Mrs V Mannion  
PO Box 533 Nanango QLD 4615  
0417 004 031  
[garvyman@internode.on.net](mailto:garvyman@internode.on.net)

## **Obedience Dog Club of Bundaberg**

Mrs A Nisbet  
PO Box 5417 Bundaberg West QLD 4670  
0449 128 451  
[Obediencedogclub.bundaberg@gmail.com](mailto:Obediencedogclub.bundaberg@gmail.com)

## **Pine Rivers Dog Training Club Inc**

Mrs D Lamprecht  
PO Box 272 Strathpine QLD 4500  
0409 472 198  
[admin@pineriversdogtraining.org](mailto:admin@pineriversdogtraining.org)

## **Qld Herding Association**

Ms S Purbrick-Illek  
0488 097 879  
[purbie@hotmail.com](mailto:purbie@hotmail.com)

## **Redcliffe Dog Obedience Club Inc**

Mrs T Pronk  
PO Box 493 Redcliffe QLD 4020  
0458 519 099  
[secretary@rdoc.com.au](mailto:secretary@rdoc.com.au)

## **Redlands Dog Obedience Club**

Miss N Wright  
0421 843 451  
[president@redlandsdoc.com.au](mailto:president@redlandsdoc.com.au)

## **Rockhampton Dog Obedience Club Inc**

Ms S Bassett  
PO Box 5064 Red Hill QLD 4702  
(07) 4939 6085 / 0419 717 619  
[sheena.bassett@bigpond.com](mailto:sheena.bassett@bigpond.com)

## **Southside Dog Obedience Club Inc**

Miss L Forster  
PO Box 2273 Runcorn QLD 4113  
0405 325 766  
[enquiries@southsidedogobedience.org](mailto:enquiries@southsidedogobedience.org)

## **Sunshine Coast Dog Obedience Club Inc**

Miss J Rigby  
PO Box 701 Buderim QLD 4556  
0403 156 599  
[scdocinc@gmail.com](mailto:scdocinc@gmail.com)

## **Tableland Dog Obedience Club**

Ms J Crerar  
(07) 4093 7848  
[tablelanddogobedience@gmail.com](mailto:tablelanddogobedience@gmail.com)

## **Toowoomba Dog Obedience Club Inc**

Mrs S McIntyre  
PO Box 6251 Clifford Gardens QLD 4350  
(07) 4633 2241  
[enquiries@dogstoowoomba.org.au](mailto:enquiries@dogstoowoomba.org.au)

## **FIELD TRIAL**

### **Field & Retrieving Association for Gundogs Inc**

Mr G Dawson  
(07) 3886 6367  
[geoff.jan.dawson@bigpond.com.au](mailto:geoff.jan.dawson@bigpond.com.au)

## **Labrador Retriever Club of Qld Inc**

Mr Greg Mitchel  
Mob 0418169606  
[tenarda55@gmail.com](mailto:tenarda55@gmail.com)

## **Wide Bay Working Gundog Club**

Mrs W Michalk  
(07) 4152 2362  
[jagacey@hotmail.com](mailto:jagacey@hotmail.com)

## **SOCIAL CLUBS – UNAFFILIATED**

### **CONFORMATION**

#### **Alaskan Malamute & Siberian Husky Social Club (Qld) Inc**

Miss T Goodwin  
PO Box 774 Redbank Plains QLD 4301  
(07) 3271 4465 (5pm-7pm only)  
[secretary.amscq@gmail.com](mailto:secretary.amscq@gmail.com)

#### **Bernese Mountain Dog Social Club of Qld**

Mrs A Gribbon  
(07) 3843 1407 / 0421 042 788  
[anne@raceengineering.com.au](mailto:anne@raceengineering.com.au)

#### **Burdekin Canine Club**

Mr C Coggan  
0410 505 810  
[burdekincanineclub@gmail.com](mailto:burdekincanineclub@gmail.com)

#### **White Swiss Dog Club of Qld Social Club**

Mrs C Keen  
PO Box 228 Ormeau QLD 4208  
0438 621 663  
[wssdcqld@gmail.com](mailto:wssdcqld@gmail.com)

### **OBEDIENCE**

#### **Warwick Dog Obedience Club**

Ms B McGregor  
PO Box 851 Warwick QLD 4370  
(07) 4664 8050  
[warwickdogobedience@gmail.com](mailto:warwickdogobedience@gmail.com)

### **FIELD**

#### **Brisbane Lure Coursing Club Inc**

Mr S Uebel  
0418 199 419  
[brislurecoursing@gmail.com](mailto:brislurecoursing@gmail.com)

### **BREED RESCUE SERVICES**

#### **AFGHAN HOUND**

Mrs V Harris  
(07) 3216 2905

#### **ANIMAL AMBULANCE/CRUELTY REPORTS**

1300 852 188

#### **AUSTRALIAN SILKY TERRIER**

Miss R Hunt  
0400 246 987  
[rachnut@hotmail.com](mailto:rachnut@hotmail.com)

#### **BASENJI**

Ms C Qualischefski  
0429 979 326 / 0422 184 755  
[channieq@gmail.com](mailto:channieq@gmail.com)

#### **BASENJI**

Ms C Benson  
0468 364 031  
[carolsmail74@gmail.com](mailto:carolsmail74@gmail.com)

#### **BASENJI**

Ms E Blair  
(07) 3217 5943  
[ethel.blair@gmail.com](mailto:ethel.blair@gmail.com)

#### **BEAGLE**

Mrs D Souter  
0418 742 941  
[rehome@beagleclubqld.org](mailto:rehome@beagleclubqld.org)

#### **BELGIAN SHEPHERDS**

Ms J Glenn  
0417 464 573  
[rescue@bsdqc.com](mailto:rescue@bsdqc.com)

#### **BERNESE MOUNTAIN DOG**

Mrs J Hazell  
(07) 3843 1407  
[teresajackie@optusnet.com.au](mailto:teresajackie@optusnet.com.au)

#### **BORZOI**

Ms V Dawson  
(07) 3857 3682

#### **BORZOI**

Mrs B Mangin  
(07) 4156 1078

#### **BULLDOG**

Mr L Perrett  
0452 210 184  
[qldbulldogclub@gmail.com](mailto:qldbulldogclub@gmail.com)

#### **BULLMASTIFF**

Mrs R Armstrong  
(07) 5546 8427 / 0401 145 129

**CAVALIER KING CHARLES SPANIEL**  
[rescue@cavalierclubqld.org.au](mailto:rescue@cavalierclubqld.org.au)

#### **COLLIE ROUGH AND SMOOTH**

Mrs J Armatys  
(07) 4157 2758 / 0428 121 726  
[keamaree@bigpond.com](mailto:keamaree@bigpond.com)

#### **DACHSHUND**

Mrs V Lingard  
(07) 3800 1127

#### **DOGUE DE BORDEAUX**

Mrs V McArthur  
0417 767 357  
[info@amedange.com](mailto:info@amedange.com)

#### **DOGUE DE BORDEAUX**

Mrs J Bloomfield  
0412 119 688  
[ddebrescue@hotmail.com](mailto:ddebrescue@hotmail.com)

#### **ENGLISH SETTER**

Mrs C Gorey  
0438 598 597  
[goreymky@bigpond.com](mailto:goreymky@bigpond.com)

#### **GERMAN SHEPHERD DOG**

Mrs J Hansford  
(07) 3289 7282  
[jehansford@techsus.com.au](mailto:jehansford@techsus.com.au)

#### **GERMAN SHORTHAIRED POINTER**

Mrs B Mangin  
(07) 4156 1078

#### **GOLDEN RETRIEVER**

Mrs K Vowell  
0423 320 020  
[grcql@gmail.com](mailto:grcql@gmail.com)



## Affiliated Clubs and Services

### GORDON SETTER

Mrs C Gorey  
0438 598 597

[goreymky@bigpond.com](mailto:goreymky@bigpond.com) **GREAT DANE**

Ms C Bowden  
0411 571 050

[adoptadaneqld@outlook.com.au](mailto:adoptadaneqld@outlook.com.au)

### HUNGARIAN VIZSLA

Mrs K Eory  
(07) 3265 1621

### IRISH RED & WHITE SETTER

Mrs C Gorey  
0438 598 597

[goreymky@bigpond.com](mailto:goreymky@bigpond.com)

### IRISH SETTER

Mrs C Gorey  
0438 598 597

[goreymky@bigpond.com](mailto:goreymky@bigpond.com)

### LABRADOR RETRIEVER

Mrs C Wardle  
91 Ciesiolka Rd Aubigny 4401  
0412 191 005

[lrcqinc@gmail.com](mailto:lrcqinc@gmail.com)

### LAGOTTO ROMAGNOLO

Mrs P Wyllie  
(07) 4163 7288 / 0400 903 303

[trish@lagottoqld.com](mailto:trish@lagottoqld.com)

### LHASA APSO

Ms J Woodward  
(07) 5428 6201 / 0413 788 775

[jane@lhasaapso.com.au](mailto:jane@lhasaapso.com.au)

### MAREMMA SHEEPDOG

Ms H Brennan  
(07) 5426 0413

### OLD ENGLISH SHEEPDOG

Mrs A Cassidy  
(07) 3201 0952

[ottaba@bigpond.net.au](mailto:ottaba@bigpond.net.au)

### POINTER

Mrs R Glegg  
(07) 5547 7689 / 0439 830 495

[robyneg6@iinet.net.au](mailto:robyneg6@iinet.net.au)

### POODLE MINIATURE & TOY

Ms P Morgan  
0414 501 707

[qpcsecretary@yahoo.com.au](mailto:qpcsecretary@yahoo.com.au)

### POODLE STANDARD

Mrs S Graham  
0417 470 542

### PUG

Ms H Jordan  
0415 370 526

### PUG

Carol-Ann  
(07) 3814 1382 / 0438 515 895

[pugrescueqld@optusnet.com.au](mailto:pugrescueqld@optusnet.com.au)

### PYRENEAN MOUNTAIN DOG

Mrs A Everson  
(07) 3200 0321

### RHODESIAN RIDGEBACK

Mrs R Smith  
(07) 5529 9903

[rescue@rrcq.com.au](mailto:rescue@rrcq.com.au)

### SAINT BERNARD

Mrs A Inmon  
0400 142 267

### SCHNAUZER

Ms A Goodwin  
0405 421 897

[schnauzerrescueqld@gmail.com](mailto:schnauzerrescueqld@gmail.com)

### SKYE TERRIER

Mrs H MacGregor  
0429 999 053 / 0428 947 110

### STAFFORDSHIRE BULL TERRIER

Miss M Nielsen  
0419 631 221

[lynn\\_n@bigpond.com](mailto:lynn_n@bigpond.com)

### TIBETAN SPANIEL CLUB OF QLD

Mrs V Schneider  
0407 115 674

[qtsrr@optusnet.com.au](mailto:qtsrr@optusnet.com.au)

### WEIMARANER

Mrs J Glover  
0419 663 942

### WEST HIGHLAND WHITE TERRIER

Mrs A Cloughley  
(07) 3206 6460

[redinbrin1@bigpond.com](mailto:redinbrin1@bigpond.com)

### WHIPPET

Secretary

[whippetclubqld@gmail.com](mailto:whippetclubqld@gmail.com)

### YORKSHIRE TERRIER

Miss R Hunt  
0400 246 987

[rachnut@hotmail.com](mailto:rachnut@hotmail.com)

### DISCLAIMER

Opinions and information published in the Dog World magazine are solely those of the individual authors and advertisers and do not necessarily reflect the advice or opinions of Dogs Queensland.

The organisation assumes no responsibility or liability for any statements made, and suggests that individuals make their own enquiries and seek their own specialist and/or independent veterinary or other advice.

## Durack Vendors

### LOOKING TO BECOME A VENDOR?

Casual and permanent sites are available at competitive prices.

For more information call the Dogs Queensland office on 3252 2661 or email [info@dogsqueensland.org.au](mailto:info@dogsqueensland.org.au)

### Puddleby Art

Contact: Toshi Ueno Ph: 0410 595 202

Email: [info@puddlebyart.com.au](mailto:info@puddlebyart.com.au)

### Lockyer Valley Sharpening

Contact: Keith Ph: 0458 920 088

Email: [kjrau@bigpond.com](mailto:kjrau@bigpond.com)

### Lilcracka Pet Supplies

Contact: Kay Ph: 0413 543 835

Email: [kay@lilcracka.com](mailto:kay@lilcracka.com)

### TAK Photography

Contact: Tracy: 0451 912 022

Email: [admin@takphotography.com.au](mailto:admin@takphotography.com.au)

### Wagz Cafe

Contact: Mark Ph: 0407 212 974

Email: [wagzcafe@gmail.com](mailto:wagzcafe@gmail.com)

**dogs**<sup>®</sup>  
QUEENSLAND

# Rates Guide 2022



## ENTRY LEVY (INCLUSIVE OF ADVERTISING)

Durack Per Entry	<b>\$6.00</b>
Non Durack Club Per Entry	<b>\$2.00</b>
Ag Society Per Entry	<b>\$2.50</b>

## Durack Rates

### DOGS QUEENSLAND SPORTS GROUND RATES

<b>Meeting Rooms</b> Starting From	<b>\$17.00</b>
<b>Field Hire</b> Starting From	<b>\$55.00</b>

For enquiries please email: [info@dogsqueensland.org.au](mailto:info@dogsqueensland.org.au) or call (07) 3252 2661.

### MEMBERSHIP FEES

Joining Fee	<b>\$38.00</b>
Single	<b>\$80.00</b>
Joint	<b>\$120.00</b>
Junior (no joining fee)	<b>No fee</b>

### PREFIX

Application (includes maintenance for year applied)	<b>\$150.00</b>
Maintenance	<b>\$50.00</b>
Transfer	<b>\$66.00</b>

### CLUB AFFILIATION FEES (South of the 26<sup>th</sup> Parallel)

All Breeds and Multiple Groups	<b>\$574.00</b>
Obedience Clubs	<b>\$424.50</b>
Single Group and Multi Breeds Clubs	<b>\$362.00</b>
Specialty Breed Club	<b>\$324.45</b>
Agricultural Societies	<b>\$324.45</b>
Tracking and Field Trials Clubs	<b>\$212.00</b>

### CLUB AFFILIATION FEES (North of the 26<sup>th</sup> Parallel)

All Breeds and Multiple Groups	<b>\$499.00</b>
Obedience Clubs	<b>\$324.45</b>
Single Group and Multi Breeds Clubs	<b>\$287.00</b>
Specialty Breed Clubs	<b>\$263.00</b>
Agricultural Societies	<b>\$262.00</b>
Tracking and Field Trial Clubs	<b>\$175.00</b>

### SOCIAL CLUBS

Social Clubs (regardless of location)	<b>\$175.00</b>
---------------------------------------	-----------------

### JUDGES LICENCE FEES

Conformation Judges	<b>\$100.00</b>
Dog Sports Judges	<b>\$80.00</b>
Training Fee for Aspiring Dog Sports Judges	<b>\$50.00</b>
Junior Handler Judges	<b>No Fee</b>

### REGISTRATIONS PER PUP MAIN REGISTER

(\$1.10 per puppy donated to Canine Research)

Under 4 months	<b>\$51.00</b>
Over 4 and under 6 months	<b>\$81.00</b>
Over 6 and under 12 months	<b>\$102.00</b>
Over 12 and under 18 months	<b>\$113.00</b>

### REGISTRATIONS PER PUP LIMITED REGISTER

(\$1.10 per puppy donated to Canine Research)

Under 4 months	<b>\$67.00</b>	<b>\$51.00</b>
Over 4 and under 6 months	<b>\$109.00</b>	<b>\$81.00</b>
Over 6 and under 12 months	<b>\$138.00</b>	<b>\$102.00</b>
Over 12 and under 18 months	<b>\$151.00</b>	<b>\$113.00</b>

\* Price for limited register pup with DNA Parentage Verification

### SEND BACK FEE

Per Litter Registration	<b>\$10.00</b>
-------------------------	----------------

### TRANSFERS

All Transfers	<b>\$37.00</b>
---------------	----------------

### DNA TESTING

Massey University Of New Zealand	<b>\$49.50</b>
----------------------------------	----------------

### RE-REGISTRATION OF DOGS /SEMEN

Imported dogs/semen	<b>\$114.00</b>
Imported dogs/semen – NZ only	<b>\$76.00</b>
Tenterfield Terriers/Greyhounds/ Murray River Retriever/Australasian Bosdog	<b>\$76.00</b>
Sporting Register	<b>\$36.00</b>
Associate Register	<b>\$20.00</b>

### TITLES

All Championship Titles (incl. breeders cert)	<b>\$40.00</b>
All other awards	<b>\$30.00</b>
(Plus breeders cert)	<b>\$12.00</b>
Laminating	<b>\$6.00</b>

### OTHER

Lease Agreements	<b>\$60.00</b>
Replacement Certificates	<b>\$25.00</b>
Export Pedigree	<b>\$72.00</b>
Extended Pedigree (5 generations)	<b>\$36.00</b>

### STATIONERY

Official Show Entry Forms (Book of 50) incl. postage	<b>\$7.50</b>
Rule Book CCC (Qld) including postage	<b>\$10.00</b>

### RULES FOR THE CONDUCT OF

Obedience Trials (A5)	<b>\$6.00</b>
Rally Trials (A5)	<b>\$4.75</b>
Agility Trials (A5)	<b>\$4.75</b>
Games Trials (A5)	<b>\$4.75</b>
Tracking Trials (A5)	<b>\$4.75</b>
Track & Search Trials (A5)	<b>\$4.75</b>
Retrieving Trials (A5)	<b>\$4.75</b>
RATG Trials (A5)	<b>\$4.75</b>
Field Trials Pointers & Setters Trials (A5)	<b>\$4.75</b>
Utility Trials (A5)	<b>\$4.75</b>
Spaniel and Retriever Trials (A5)	<b>\$4.75</b>
Endurance Trials (A5)	<b>\$4.75</b>
Herding Trials (A5)	<b>\$4.75</b>
Dances With Dogs Trials (A5)	<b>\$4.75</b>
Lure Coursing Trials (A5)	<b>\$4.75</b>
Drafting Trials (A5)	<b>\$4.75</b>

### RULES FOR THE CONDUCT OF (CONT)

Sled Sports (A5)	<b>\$4.75</b>
Scent Work	<b>\$4.75</b>
Trick Dogs	<b>\$4.75</b>

### BREED STANDARDS

Full set of 8 (7 x Groups + 1 glossary of terms)	<b>\$57.00</b>
Postage per full set	<b>POA</b>
Single group	<b>\$7.00</b>
Breed extensions	<b>\$4.75</b>
Loose leaf breeds	<b>\$0.66</b>
Postage per group	<b>\$2.50</b>

### CERTIFICATES

Challenge	<b>\$0.50</b>
Reserve Challenge	<b>\$0.50</b>
Best Of Breed	<b>\$0.50</b>
Group Awards (2 In Show, 14 In Group)	<b>\$6.00</b>
Neuter Challenge	<b>\$0.50</b>
Neuter in Group Award	<b>\$0.50</b>
Neuter in Show Award	<b>\$0.50</b>
Best Neuter Of Breed	<b>\$0.50</b>
Obedience Qual.	<b>\$0.50</b>
Agility Qual.	<b>\$0.50</b>
Retrieving Ability Test for Gundogs	<b>\$0.50</b>
Tracking Qual.	<b>\$0.50</b>
Track & Search Qual.	<b>\$0.50</b>
Field & Ret Qual.	<b>\$0.50</b>
Dances with Dogs	<b>\$0.50</b>
Rally	<b>\$0.50</b>
Lure Course	<b>\$0.50</b>
Lure Course Open Stake	<b>\$0.50</b>
Earthdog Test	<b>\$0.50</b>
Herding	<b>\$0.50</b>
Sled Sport Event	<b>\$0.50</b>

### SET STEWARDS GRAPHS

(10 + 2 General Specials sheet(s))	<b>\$5.60</b>
------------------------------------	---------------

### OBEDIENCE JUDGING CHARTS

Novice, Open, Utility and or Agility (25 sheets per set)	<b>\$4.75</b>
--	---------------

A 0.75% fee applies to payments made by Visa Credit, Visa Debit/Prepaid, Mastercard Credit and Mastercard Debit/Prepaid. There will be no charge if Members come to the counter and pay by EFTPOS.

Postage For Bulk Stationery Orders Will Be Invoiced.  
All prices include GST. Prices are subject to change.

### Advertising Disclaimer

The publishers accept no responsibility for the contents of advertisements. All advertisements are accepted in good faith and the liability of advertising content is the responsibility of the advertiser.

# THAT'S A Eukanuba™ DOG.

# Eukanuba™



## Unleash the extraordinary in your dog



For the last 50 years, we've used the power of nutritional science to fuel dogs' athletic abilities and unleash their full potential.

Whether your dog is a show dog, used for breeding, a working professional or a family companion, body condition, nutrition and the environment will influence health and performance throughout their lifetime.

We're driven by the idea that nutrition, dogs' lives and performance can always be improved. That's often meant our formulas have broken new ground. We were the first to use beet pulp and key prebiotics to help optimise digestion, the first to use specific levels of omega-6 and omega-3 fatty acids to help support skin and coat health and we created an antioxidant blend to support immune function and post-exercise recovery. The list of breakthroughs goes on — and our commitment to making the best performance nutrition will as well.

## 20% OFF SELECTED Eukanuba™ ADULT DIETS\*

Enjoy this and other exclusive promotions when you join the Eukanuba™ Professional Club. To sign up visit our website: [eukanuba.com/au](https://eukanuba.com/au)

\*Only available at the Eukanuba ProShop ([webshop.eukanuba.com](https://webshop.eukanuba.com)), 1st October — 30th November 2022. Offer includes Small, Medium and Large Breed Adult Dry Diets, Small, Medium and Large Breed Senior Dry Diets and Small, Medium and Large Breed Fit Body Dry Diets. 15kg order minimum.

# BLUE BRUSH RANGE



Designed for ergonomic comfort, stress free brushing and superior groomed results at an affordable price.



## PIN BRUSH REGULAR ROUND TIPPED PINS

Ideal for providing comfort whilst brushing. Designed with secure round-tipped pins set into a rubber cushion this brush will reduce dragging and leave dogs coat knot free.



## 100% PURE BOAR BRISTLE BRUSH

An effective pure bristle brush, ergonomically designed for extra comfort when grooming long, short and soft coated breeds.



## POCKET PIN BRUSH

Ideal for providing a pocket sized brush for ringside or smaller to reach areas. The Pocket Pin is a lightweight, convenient handy size with 15mm pins set into a secure rubber cushion.



## ANTI-STATIC PORCUPINE BRUSH

A super anti-static brush for use on a wide range of coats. Ergonomically designed for less stress to the avid groomer.



## COMPACT LONG PIN SLICKER BRUSH

Ideal for dense coats that require deep brushing with intensive coat separation and finish. Great give and cushioning for a softer effect. Lightweight, ideal balance of slicker pins and ergonomically designed.

## LARGE LONG PIN SLICKER BRUSH

Ideal for optimising long and dense coats via deep brushing with intensive coat separation and finish. The large brush head and extra-long pins with a bend allow you to pick up more coat with each stroke and create mega lift and movement.

## SOFT SLICKER BRUSH

Great give and cushioning for a softer effect. Lightweight, ideal balance of slicker pins and ergonomically designed by our Plush Puppy® show grooming team.



MINI

GET THE *Winning* ADVANTAGE, EVERY TIME.